

# Kansas Register

Ron Thornburgh, Secretary of State

Vol. 16, No. 33 August 14, 1997 Pages 1305-1344

In this issue . . .	Page
<b>State Banking Department</b>	
Notice of hearing on proposed administrative regulations .....	1306
<b>Secretary of State</b>	
Executive appointments .....	1307
<b>Advisory Committee on Children and Families</b>	
Notice of meeting .....	1307
<b>Department of Transportation</b>	
Notice of public auction .....	1307
<b>Legislative interim committee schedule</b> .....	1308
<b>Department of Administration—Division of Architectural Services</b>	
Notice of commencement of negotiations for architectural/engineering services .....	1309
Notices of commencement of negotiations for architectural services .....	1309, 1310, 1311
<b>University of Kansas Medical Center</b>	
Notice to bidders .....	1310
<b>State Corporation Commission</b>	
Notice of hearing .....	1310
<b>Kansas State University</b>	
Notice to bidders .....	1310
<b>Pooled Money Investment Board</b>	
Notice of investment rates .....	1312
<b>Department of Health and Environment</b>	
Requests for comments on proposed air quality permits .....	1311, 1312, 1313, 1314
Notice of deadline extension for Toxic Release Inventory Reports .....	1312
Clarification to notice of hearing on municipal solid waste landfill regulations .....	1314
Notice concerning Kansas water pollution control permits .....	1315
Notice of hearing on proposed administrative regulations .....	1316
<b>Kansas, Inc.</b>	
Notice of meeting .....	1313
<b>State Banking Board</b>	
Notice of meeting .....	1313
<b>Criminal Justice Coordinating Council</b>	
Notice of meeting .....	1314
<b>Kansas Advocacy and Protective Services</b>	
Requests for comments .....	1316
<b>Department of Administration—Division of Purchases</b>	
Notice to bidders for state purchases .....	1317
<b>Court of Appeals docket</b> .....	1318
<b>Department of Administration</b>	
Public notice .....	1324
<b>Kansas Commission on Governmental Standards and Conduct</b>	
Advisory Opinions No. 97-29 through 97-32 .....	1324
<b>Notice of Bond Sale</b>	
City of Anthony .....	1326
City of Independence .....	1327
City of Kansas City .....	1328
<b>Permanent Administrative Regulations</b>	
Department of Human Resources—Division of Workers Compensation .....	1329
Department of Commerce and Housing .....	1329
State Corporation Commission .....	1332
<b>Index to administrative regulations</b> .....	1335

## State of Kansas

## State Banking Department

Notice of Hearing on Proposed  
Administrative Regulations

A public hearing will be conducted at 9 a.m. Monday, October 20, in the conference room of the Office of the State Bank Commissioner, Suite 300, 700 S.W. Jackson, Topeka, to consider the adoption of proposed changes to Kansas Administrative Regulation 17-22-1, application fees. This regulation is proposed for adoption on a permanent basis.

K.A.R. 17-22-1 establishes fees to be paid to the Office of the State Bank Commissioner (OSBC) in connection with applications filed with the OSBC to engage in various activities. Besides setting the fees for bank and trust company applications, the regulation also includes a fee for requests for letters of good standing and for revenue bond approvals. Letters of good standing may be requested by any person or entity. Revenue bond approval requests generally come from municipalities or counties. All proposed amendments constitute reductions in current application fees. These reductions in all cases should result in cost savings to the applicants and will have a minimal economic impact on the OSBC. Application fees collected by the OSBC in fiscal year 1996 represented ap-

proximately 3.4 percent of the department's total income for that year.

This 60-day notice of hearing shall constitute a public comment period for the purpose of receiving public comments on the proposed regulation. Written comments should be submitted prior to the hearing to W. Newton Male, State Bank Commissioner, at the address listed below. Interested persons will be given reasonable opportunity at the hearing to present their views and arguments on the adoption of the proposed regulation; however, presentations should be in writing whenever possible.

A copy of the proposed regulation and the economic impact statement may be obtained by contacting Amy Johnson, Office of the State Bank Commissioner, 700 S.W. Jackson, Suite 300, Topeka, 66603, (785) 296-2266. The standard departmental cost will be assessed for any copies requested.

Any individual with a disability may request accommodation in order to participate in the public hearing and may request the proposed regulation and economic impact statement in an accessible format. Requests for accommodation should be made at least five working days before the hearing by contacting Amy Johnson.

W. Newton Male  
State Bank Commissioner

Doc. No. 019507

The Kansas Register (ISSN No. 0662-190) is an official publication of the State of Kansas, published by authority of K.S.A. 75-430. The Kansas Register is published weekly by the Kansas Secretary of State, State Capitol, Topeka, KS 66612-1594. One-year subscriptions are \$70 (Kansas residents must include \$4.31 state and local sales tax). Single copies may be purchased, if available, for \$2 each. Periodicals postage paid at Topeka, KS.

*Postmaster:* Send change of address form to Kansas Register, Secretary of State, State Capitol, 300 S.W. 10th Ave., Topeka, KS 66612-1594.

© Kansas Secretary of State 1997. Reproduction of this publication in its entirety or for commercial purposes is prohibited without prior permission. Official enactments of the Kansas Legislature and proposed and adopted administrative regulations of state agencies may be reproduced in any form without permission.

**PUBLISHED BY**  
**Ron Thornburgh**  
Secretary of State  
2nd Floor, State Capitol  
300 S.W. 10th Ave.  
Topeka, KS 66612-1594  
(913) 296-4564



**Register Office:**  
Room 233-N, State Capitol  
(913) 296-3489  
Fax (913) 291-3051

State of Kansas

**Secretary of State**

**Executive Appointments**

Executive appointments made by the Governor, and in some cases by other state officials, are filed with the Secretary of State's office. The following appointments, which are effective immediately unless otherwise specified, were recently filed with the Secretary of State:

**Abstracters' Board of Examiners**

S. Lee Stutzman, Charlson and Wilson Bonded Abstracters, 111 N. 4th, Manhattan, 66502. Term expires June 30, 2000. Succeeds William Malone.

**Advisory Commission on African-American Affairs**

John H. Washington, 1201 Parkwood St., Garden City, 67846. Appointed by the Speaker of the House.

**State Board of Healing Arts**

Donald B. Bletz, M.D., 15125 Melrose Drive, Overland Park, 66221. Term expires June 30, 2001. Reappointment.

Hai Kim Huynh-Truong, D.O., 2552 N. Foxrun Court, Wichita, 67226. Term expires June 30, 2001. Succeeds John White.

Jana Dell Jones, M.D., F.A.C.P., 24964 W. 160th Court, Leavenworth, 66048. Term expires June 30, 2001. Succeeds Edward Fitzgerald.

**State Board of Nursing**

Katharine F. Clark, CRNA, MS, 8930 Peppertree Circle, Wichita, 67226. Term expires June 30, 2001. Succeeds Arneatha Martin.

Jane Anne Conroy, 2614 Apple Drive, Emporia, 66801. Term expires June 30, 2001. Succeeds Carol Maynard.

Carol Maynard, 702 E. Peoria, Paola, 66071. Term expires June 30, 1998. Succeeds James McClinton, resigned.

Anna M. Pechanec, LPN, 1336 Grand, Hays, 67601. Term expires June 30, 2001. Succeeds Dorothy Zook.

**Kansas Wheat Commission**

Ed M. Banning, 2703 Shamus, Garden City, 67846. Term expires June 30, 2001. Succeeds Linda Hessman.

Ken R. Palmgren, 2835 Road 64, Edson, 67733. Term expires June 30, 2001. Succeeds Wayne Hagerman.

Craig Stephenson, 5668 S. Kipp Road, Gypsum, 67448. Term expires June 30, 2001. Succeeds Jack Staatz.

**Workforce Investment Partnership Council**

Dave Foster, 3304 W. 71st, Prairie Village, 66208. Serves at the pleasure of the Governor. Succeeds Arthur Waugh.

David P. Thomas, 12628 Juniper Circle, Leawood, 66209. Serves at the pleasure of the Governor. Succeeds David Alexander.

Ron Thornburgh  
Secretary of State

Doc. No. 019505

State of Kansas

**Advisory Committee on Children and Families**

**Notice of Meeting**

The Governor's Advisory Committee on Children and Families will meet at 10 a.m. Tuesday, August 19, in the SRS board room, sixth floor, Docking State Office Building, 915 S.W. Harrison, Topeka. For more information, contact Hope Burns at (913) 296-3969.

John Zutavern  
Chair

Doc. No. 019501

State of Kansas

**Department of Transportation**

**Notice of Public Auction**

The Kansas Secretary of Transportation will offer for sale at public auction at site at 11 a.m. September 17 the following building and land located in Sedgwick County, Kansas, described as follows:

A 2-story commercial building with 2,160 sq. ft. of ground floor area and upper floor containing 1,008 sq. ft. located at 11023 W. 39th South in Schulte, Kansas (southeast corner of K-42 Highway and old MacArthur Road). The legal description of the property is Lot 1 Coleman Addition. (A complete legal description is available upon request.)

An inspection of property will be September 10 from 9 a.m. to noon and 30 minutes prior to the sale.

The Kansas Department of Transportation ensures the acceptance of any bid pursuant to this notice will be without discrimination on the grounds of sex, race, color, religion, physical handicap or national origin.

**Terms of the Sale**

Certified or cashier's check for 10 percent of the purchase price the day of the sale. The balance of the purchase price will be paid by certified or cashier's check on or before October 17, 1997. Make check(s) payable to "Kansas Department of Transportation." The successful bidder will receive a bill of sale on the day of sale and a quitclaim deed when the balance is paid. If the balance of the purchase price is not paid on or before said date, the 10 percent down payment will be forfeited to the seller. The appraised value is \$73,500 and the minimum acceptable bid is two-thirds of appraised value.

The seller reserves the right to reject any and all bids and is not responsible for accidents. For additional information, contact Fred Terry, Bureau of Right of Way, (785) 296-3501.

E. Dean Carlson  
Secretary of Transportation

Doc. No. 019530

## State of Kansas

## Legislature

## Interim Committee Schedule

The following committee meetings have been scheduled during the period of August 18 through August 31:

Date	Room	Time	Committee	Agenda
August 18	313-S	9:00 a.m.	Task Force on Retail Wheeling	Review of consultant's final report.
August 18	531-N	9:30 a.m.	Joint Committee on Computers and Telecommunications	Review of juvenile justice and criminal justice information systems; geographical information system; and one-step coordination.
August 19 (One-day meeting only— August 20 meeting cancelled)	514-S	10:00 a.m.	Joint Committee on Administrative Rules and Regulations	Review rules and regulations filed by State Child Death Review Bd., Dept. on Aging, Bd. of Healing Arts, Credit Union Dept., Dental Board and Bank Commissioner; receive report from Dept. of Revenue on its revision of rules and regulations; and staff report on regulations finally adopted.
August 19 August 20	526-S 526-S	9:00 a.m. 9:00 a.m.	Special Committee on Tourism	<u>19th</u> : Overview of tourism issues; Topic No. 1—Update on Land of Oz Proposal and National Association of Stock Car Racing. <u>20th</u> : Topic No. 2—Funding of Tourism Promotion.
August 20	123-S	10:00 a.m.	Legislative Coordinating Council	Legislative matters.
August 21	514-S	10:00 a.m.	Task Force on Kansas Insurance Industry	Overview of insurance industry and perspective on the industry from insurance members of the task force.
August 21 August 22	123-S 123-S	10:00 a.m. 9:00 a.m.	Legislative Budget Committee	<u>21st</u> : Presentation by Attorney General Carla Stovall on tobacco litigation; FY 1997 year-end state general fund reports; status report on lottery, racing and gaming receipts and activities. <u>22nd</u> : Regents' tuition accountability and graduate teaching assistants' health insurance; status report on disposal of Topeka State Hospital property.
August 21 August 22	313-S 313-S	10:00 a.m. 9:00 a.m.	Special Committee on Education	Topic No. 4—Kansas State High School Activities Association.
August 21 August 22	519-S 519-S	10:00 a.m. 9:00 a.m.	Joint Committee on State Building Construction	Agenda unavailable.
August 25	531-N	10:00 a.m.	Health Care Reform Legislative Oversight Committee	Organization.

August 25	514-S	10:00 a.m.	Joint Committee on	Various presentations on seed/venture funds in which KTEC holds equity interests.
August 26	514-S	9:00 a.m.	Economic Development	
August 25	519-S	10:00 a.m.	Special Committee on	Agenda unavailable.
August 26	519-S	9:00 a.m.	Assessment and Taxation	
August 27	519-S	10:00 a.m.	Joint Committee on Pensions,	Agenda unavailable.
August 28	519-S	9:00 a.m.	Investments and Benefits	
August 27	Wichita	10:00 a.m.	Joint Committee on	Tour juvenile and adult correctional facilities; public hearings—Sentencing Commission, Juvenile Justice Authority, Department of Corrections; masterplan consultants.
August 28	Wichita	9:00 a.m.	Corrections and Juvenile Justice Oversight	
August 28	526-S	9:00 a.m.	Special Committee on	Agenda unavailable.
August 29	526-S	9:00 a.m.	Energy and Natural Resources/Environment	

Emil Lutz  
Director of Legislative  
Administrative Services

Doc. No. 019516

State of Kansas

Department of Administration  
Division of Architectural Services

Notice of Commencement of Negotiations for  
Architectural and Engineering Services

Notice is hereby given of the commencement of negotiations for "on-call" architectural and engineering services for the State Adjutant General's Office. Two architectural and two engineering firms will be selected. Interested firms should be capable of assisting agency personnel on miscellaneous small architectural and engineering projects for up to three years.

For information regarding the scope of services, contact Col. William Vonderschmidt, Adjutant General's Department, (785) 274-1141.

If interested, an original and six copies of the SF 255 form (plus relevant attachments of information regarding similar projects) should be submitted. These submittals should be concise, relevant to the project and follow the State Building Advisory Commission guidelines for submittal. Copies of the guidelines have previously been distributed to firms; if copies of the guidelines are required, contact Gary Grimes, Division of Architectural Services, 625 Polk, Topeka, 66603, (785) 233-9367. Submittals not complying with the guidelines will be returned without consideration.

Expressions of interest and the SF 255 submittals should be received by Gary Grimes before 5 p.m. August 29.

Thaine Hoffman, AIA  
Director, Division of  
Architectural Services

Doc. No. 019511

State of Kansas

Department of Administration  
Division of Architectural Services

Notice of Commencement of  
Negotiations for Architectural Services

Notice is hereby given of the commencement of negotiations for architectural services for the locking system replacement in B Cellhouse at Lansing Correctional Facility. The project will include replacement of the existing Southern Steel 7100 locking system with a new locking system, and replacement of control panels, wiring, housing covers, gear and motors, etc.; cellfronts shall remain. The estimated project cost is \$1,500,000.

For information regarding the scope of services, contact Mike Gaito, Department of Corrections, (785) 296-5187.

If interested, an original and six copies of the SF 255 form (plus relevant attachments of information regarding similar projects) should be submitted. These submittals should be concise, relevant to the project and follow the State Building Advisory Commission guidelines for submittal. Copies of the guidelines have previously been distributed to firms; if copies of the guidelines are required, contact Gary Grimes, Division of Architectural Services, 625 Polk, Topeka, 66603, (785) 233-9367. Submittals not complying with the guidelines will be returned without consideration.

Expressions of interest and the SF 255 submittals should be received by Gary Grimes before 5 p.m. August 29.

Thaine Hoffman, AIA  
Director, Division of  
Architectural Services

Doc. No. 019513

## State of Kansas

## University of Kansas Medical Center

## Notice to Bidders

Sealed bids for the items listed below will be received by the University of Kansas Medical Center, Purchasing Department, 3901 Rainbow Blvd., Kansas City, KS 66160-7162, until 2 p.m. on the date indicated and then will be publicly opened. Interested bidders may call Peggy Davis at (913) 588-1115 for additional information.

Thursday, August 28, 1997  
728018

Camcorder and editing system

Barbara Lockhart  
Purchasing Director

Doc. No. 019529

## State of Kansas

## State Corporation Commission

## Notice of Hearing

The State Corporation Commission has directed that an investigation be instituted and a hearing conducted to determine the reasonable market demand for gas produced from the following fields for the period of October 1, 1997 through March 31, 1998, inclusive; to determine the deliverability and acreage attributable to each of the wells therein; and to fix gas production percentages and quotas for wells within the fields. Evidence will be received for the above purposes and for determining and fixing the allowables for each of the wells in the following fields for the stated proration period:

- Greenwood Gas Field in Morton County
- Hugoton Gas Field in Finney, Grant, Gray, Hamilton, Haskell, Kearny, Morton, Seward, Stanton, Stevens and Wichita counties
- Panoma-Council Grove Gas Field in Finney, Grant, Hamilton, Haskell, Kearny, Morton, Seward, Stanton, Stevens and Wichita counties
- Glick (Mississippi) Gas Pool in Barber, Comanche and Kiowa counties

The hearing will be at 10 a.m. Thursday, September 18, in Room 2078, Finney State Office Building, 130 S. Market, Wichita. All transporters of gas produced from the above fields must furnish to the commission at the hearing their nominations from the fields for the calendar months included in the proration period.

Further information may be obtained by contacting John McCannon or William J. Wix, Assistant General Counsel, State Corporation Commission, Conservation Division, Room 2078, Finney State Office Building, 130 S. Market, Wichita, 67202, (316) 337-6200.

Judith McConnell  
Executive Director

Doc. No. 019502

## State of Kansas

## Kansas State University

## Notice to Bidders

Sealed bids for the item listed below will be received by the Kansas State University Purchasing Office, Manhattan, until 2 p.m. local time on the date indicated and then will be publicly opened. Interested bidders may call (785) 532-6214 or fax (785) 532-5577 for additional information.

Monday, August 25, 1997  
#80045

Gas chromatograph system

William H. Sesler  
Director of Purchasing

Doc. No. 019528

## State of Kansas

Department of Administration  
Division of Architectural ServicesNotice of Commencement of  
Negotiations for Architectural Services

Notice is hereby given of the commencement of negotiations for architectural services for the remodeling of the second floor of the existing building at 402 E. 2nd, Wichita, for the Department of Human Resources. Approximately 7,000 square feet of the second floor will be remodeled to accommodate the installation of a telephone call center to process unemployment claims.

The remodeling will include the addition of electrical services to accommodate the telephone and computer equipment, the installation of security equipment to isolate the second floor from public access, and the replacement of lighting. The project may be done in phases due to limited funds. Funds available the first year are approximately \$100,000.

For information regarding the scope of services, contact Linda Hubbard, Department of Human Resources, (785) 296-5073.

If interested, an original and six copies of the SF 255 form (plus relevant attachments of information regarding similar projects) should be submitted. These submittals should be concise, relevant to the project and follow the State Building Advisory Commission guidelines for submittal. Copies of the guidelines have previously been distributed to firms; if copies of the guidelines are required, contact Gary Grimes, Division of Architectural Services, 625 Polk, Topeka, 66603, (785) 233-9367. Submittals not complying with the guidelines will be returned without consideration.

Expressions of interest and the SF 255 submittals should be received by Gary Grimes before 5 p.m. August 29.

Thaine Hoffman, AIA  
Director, Division of  
Architectural Services

Doc. No. 019514

State of Kansas

**Department of Administration  
Division of Architectural Services**

**Notice of Commencement of  
Negotiations for Architectural Services**

Notice is hereby given of the commencement of negotiations for "on-call" architectural services for the Kansas State Fair, Hutchinson. An individual or firm will be selected to provide services for small projects at the fairgrounds.

For information regarding the scope of services, contact Bob Gottschalk, Kansas State Fair, (316) 669-3600.

If interested, an original and six copies of the SF 255 form (plus relevant attachments of information regarding similar projects) should be submitted. These submittals should be concise, relevant to the project and follow the State Building Advisory Commission guidelines for submittal. Copies of the guidelines have previously been distributed to firms; if copies of the guidelines are required, contact Gary Grimes, Division of Architectural Services, 625 Polk, Topeka, 66603, (785) 233-9367. Submittals not complying with the guidelines will be returned without consideration.

Expressions of interest and the SF 255 submittals should be received by Gary Grimes before 5 p.m. August 29.

Thaine Hoffman, AIA  
Director, Division of  
Architectural Services

Doc. No. 019508

State of Kansas

**Department of Health  
and Environment**

**Requests for Comments**

The Kansas Department of Health and Environment is soliciting comments regarding issuance of authorizations to operate under the general Class I air quality operating permit for natural gas compressor stations. Authorizations to operate under the general Class I operating permit have been issued in accordance with the provisions of K.A.R. 28-19-400 *et seq.*

A copy of each permit application, authorization and all supporting nonconfidential documentation is available for public review during normal business hours at the KDHE, Bureau of Air and Radiation, Building 283, Forbes Field, Topeka. Information also is available at the KDHE district office indicated for each facility. To obtain or review the permit, authorization and supporting documentation, contact Connie Carreno, (785) 296-6422, at the KDHE central office, or the indicated district representative. The standard departmental cost will be assessed for any copies requested.

Direct written comments or questions regarding an authorization to Connie Carreno, Bureau of Air and Radiation, KDHE, Building 283, Forbes Field, Topeka, 66620.

A list of all major sources within the state authorized to operate under the terms of the general Class I operating permit will be maintained at the Topeka KDHE offices.

**Authorizations issued during the week  
of July 28, 1997:**

**Company:**  
**Compressor Station:**  
**Source ID No.:**  
**Location:**  
**KDHE District Rep.:**  
**Rep. Location:**

**Amoco Production Company**  
Ulysses West Main Compressor Station  
0670032  
S28, T28S, R38W, Grant County  
Wayne Neese, (316) 225-3731  
Southwest District Office, Dodge City

**Amoco Production Company**  
Ulysses West C Compressor Station  
0670024  
S9, T27S, R38W, Grant County  
Wayne Neese, (316) 225-3731  
Southwest District Office, Dodge City

**Amoco Production Company**  
Ulysses South E Compressor Station  
1290009  
S8, T32S, R39W, Morton County  
Wayne Neese, (316) 225-3731  
Southwest District Office, Dodge City

**Amoco Production Company**  
Ulysses Sublette Compressor Station  
0810012  
S2, T29S, R33W, Haskell County  
Wayne Neese, (316) 225-3731  
Southwest District Office, Dodge City

**Kansas Industrial Energy Supply**  
K.I.E.S. Compressor Station  
0590022  
5757 S.W. 120th, Spivey  
David Butler, (316) 337-6020  
South Central District Office, Wichita

**Kansas Pipeline Operating Company**  
Ottawa Compressor Station  
0590022  
S32, T16S, R20E, Franklin County  
Pat Simpson, (785) 842-4600  
Northeast District Office, Lawrence

**Kansas Pipeline Operating Company**  
Beaumont Compressor Station  
0730014  
S21, T27S, R9E, Greenwood County  
Lynn Ranabarger, (316) 431-2390  
Southeast District Office, Chanute

Gary R. Mitchell  
Secretary of Health  
and Environment

Doc. No. 019520



## State of Kansas

**Pooled Money Investment Board****Notice of Investment Rates**

The following rates are published in accordance with K.S.A. 1996 Supp. 75-4210. These rates and their uses are defined in K.S.A. 1996 Supp. 12-1675(b)(c)(d), and K.S.A. 1996 Supp. 75-4201(l) and 75-4209(a)(1)(B).

Effective 8-11-97 through 8-17-97	
Term	Rate
1-89 days	5.42%
3 months	5.48%
6 months	5.61%
9 months	5.73%
12 months	5.81%
18 months	5.94%
24 months	6.00%

William E. Lewis  
Chairman

Doc. No. 019503

## State of Kansas

**Department of Health  
and Environment****Notice of Deadline Extension for  
Toxic Release Inventory Reports**

The Kansas Department of Health and Environment, Bureau of Air and Radiation, Community Right-to-Know Program is extending the compliance deadline for the submittal of toxic release inventory (TRI) reports for calendar year 1996 until September 8, 1997. This action is taken to conform the state deadline with that of the U.S. Environmental Protection Agency, which announced that it will allow facilities required to submit TRI reports for calendar year 1996 until September 8, 1997, to file those reports (see Federal Register, July 24, 1997).

These TRI reports under Section 313 of the Emergency Planning and Community Right-to-Know Act and Section 6607 of the Pollution Prevention Act would otherwise be due on or before July 1, 1997. The Kansas Department of Health and Environment had earlier extended the deadline to August 1, 1997 (see Kansas Register, June 12, 1997) to conform the state deadline with that of the EPA, which extended its deadline to August 1, 1997 (see Federal Register, May 27, 1997). The additional extension is being granted due to continued delays and errors the EPA is experiencing in the distribution of the reporting package, which includes extensive materials and guidance for preparing TRI reports, for the 1996 reporting year. To allow facilities adequate time to prepare and submit complete and accurate TRI reports, especially in electronic format, EPA is allowing facilities extra time in which to report.

The Kansas Department of Health and Environment, Bureau of Air and Radiation, Community Right-to-Know Program also receives the TRI report. This notice embraces the federal time allowance to avoid potential non-compliance resulting solely from the delay in availability

of the TRI report package. No other deadlines, requirements, obligations or standards are affected by this notice.

For further information, contact Scott Bangert, Community Right-to-Know Program, Forbes Field, Building 283, J Street and 2 North, Topeka, 66620, (785) 296-1690.

Gary R. Mitchell  
Secretary of Health  
and Environment

Doc. No. 019519

## State of Kansas

**Department of Health  
and Environment****Request for Comments**

The Kansas Department of Health and Environment is soliciting comments regarding a proposed air quality operating permit. Lucent Technologies has applied for a Class II operating permit in accordance with the provisions of K.A.R. 28-19-540. Emissions of volatile organic compounds (VOCs) were evaluated during the permit review process. The purpose of this Class II permit is to limit the potential-to-emit for these pollutants to below K.A.R. 28-19-73 VOC threshold.

Lucent Technologies, New York, New York, owns and operates a telephone equipment manufacturing facility located at 9501 W. 67th, Merriam, Kansas.

A copy of the proposed permit, permit application, all supporting documentation and all information relied upon during the permit application review process is available for public review during normal business hours at the KDHE, Bureau of Air and Radiation, Building 283, Forbes Field, Topeka, and at the Johnson County Environmental Department, 11180 Thompson Ave., Lenexa. To obtain or review the proposed permit and supporting documentation, contact David A. Peter, (785) 296-1615, at the KDHE central office, or Mike Boothe, (913) 492-0402, at the Johnson County Environmental Department. The standard departmental cost will be assessed for any copies requested.

Direct written comments or questions regarding the proposed permit to David A. Peter, KDHE, Bureau of Air and Radiation, Building 283, Forbes Field, Topeka, 66620. Written comments must be received by the close of business September 15 in order to be considered in formulating a final permit decision.

A person may request a public hearing be conducted on the proposed permit. The request for a public hearing shall be in writing and set forth the basis for the request. The written request must be submitted to Connie Carreno, Bureau of Air and Radiation, not later than the close of business September 15 in order for the Secretary of Health and Environment to consider the request.

Gary R. Mitchell  
Secretary of Health  
and Environment

Doc. No. 019522



## State of Kansas

## Kansas, Inc.

## Notice of Meeting

The Kansas, Inc. Board of Directors will meet from 8:30 a.m. to noon Friday, August 22, at the Smoky Hill Country Club, 3303 Hall, Hays. The meeting is open to the public.

Charles R. Warren  
President

Doc. No. 019500

## State of Kansas

Department of Health  
and Environment

## Request for Comments

The Kansas Department of Health and Environment is soliciting comments regarding a proposed air quality construction permit. Anadarko Gathering Company has applied for an air quality construction permit in accordance with the provisions of K.A.R. 28-19-300 to install compressor engines. Emissions of nitrogen oxides and carbon monoxide were evaluated during the permit review process.

Anadarko Gathering Company, Liberal, owns and operates the stationary source to be located at NW $\frac{1}{4}$ , Section 22, Township 33 South, Range 40 West, Morton County, at which the compressor engines are to be installed.

A copy of the proposed permit, permit application, all supporting documentation and all information relied upon during review of the permit application is available for public inspection during normal business hours at the KDHE, Bureau of Air and Radiation, Building 283, Forbes Field, Topeka, and at the KDHE southwest district office, 302 W. McArtor, Dodge City. To obtain or review the proposed permit and supporting documentation, contact Shawn Howell, (785) 296-1993, at the KDHE central office, or Wayne Neese, (316) 225-0596, at the KDHE southwest district office. The standard departmental cost will be assessed for any copies requested.

Direct written comments or questions regarding the proposed permit to Shawn Howell, KDHE, Bureau of Air and Radiation, Building 283, Forbes Field, Topeka, 66620. Written comments must be received by the close of business September 15 in order to be considered in formulating a final permit decision.

A person may request a public hearing be conducted on the proposed permit. The request for a public hearing shall be in writing and set forth the basis for the request. The written request must be submitted to Connie Carreno, Bureau of Air and Radiation, not later than the close of business September 15 in order for the Secretary of Health and Environment to consider the request.

Gary R. Mitchell  
Secretary of Health  
and Environment

Doc. No. 019424

## State of Kansas

## State Banking Board

## Notice of Meeting

The State Banking Board will meet at 9 a.m. Monday, September 15, in the conference room of the Office of the State Bank Commissioner, Suite 300, Jayhawk Tower, 700 S.W. Jackson, Topeka. The board reviews matters relating to its supervisory authority as set forth in K.S.A. 9-1801 *et seq.*

W. Newton Male  
State Bank Commissioner

Doc. No. 019510

## State of Kansas

Department of Health  
and Environment

## Request for Comments

The Kansas Department of Health and Environment is soliciting comments regarding a proposed air quality construction permit. Cargill, Incorporated has applied for an air quality construction permit in accordance with the provisions of K.A.R. 28-19-300 to install a bean cleaner and dryer. Emissions of particulate matter were evaluated during the permit review process.

Cargill, Incorporated owns and operates the stationary source located at 1425 N. Mosley, Wichita, at which the equipment is to be installed.

A copy of the proposed permit, permit application, all supporting documentation and all information relied upon during review of the permit application is available for public inspection during normal business hours at the KDHE, Bureau of Air and Radiation, Building 283, Forbes Field, Topeka, and at the Wichita-Sedgwick County Department of Community Health, 1900 E. 9th, Wichita. To obtain or review the proposed permit and supporting documentation, contact Shawn Howell, (785) 296-1993, at the KDHE central office, or John Stark, (316) 268-8449, at the Wichita-Sedgwick County Department of Community Health. The standard departmental cost will be assessed for any copies requested.

Direct written comments or questions regarding the proposed permit to Shawn Howell, KDHE, Bureau of Air and Radiation, Building 283, Forbes Field, Topeka, 66620. Written comments must be received by the close of business September 15 in order to be considered in formulating a final permit decision.

A person may request a public hearing be conducted on the proposed permit. The request for a public hearing shall be in writing and set forth the basis for the request. The written request must be submitted to Connie Carreno, Bureau of Air and Radiation, not later than the close of business September 15 in order for the Secretary of Health and Environment to consider the request.

Gary R. Mitchell  
Secretary of Health  
and Environment

Doc. No. 019523

## State of Kansas

**Criminal Justice Coordinating Council****Notice of Meeting**

The Kansas Criminal Justice Coordinating Council will conduct a conference call meeting at 9:30 a.m. Friday, August 15, to approve amendments to the CJIS Plan. For further information, contact the commission office at (785) 296-0923.

Barbara S. Tombs  
Executive Director

Doc. No. 019506

## State of Kansas

**Department of Health  
and Environment****Request for Comments**

The Kansas Department of Health and Environment is soliciting comments regarding a proposed air quality construction permit. Anadarko Gathering Company has applied for an air quality construction permit in accordance with the provisions of K.A.R. 28-19-300 to install compressor engines. Emissions of nitrogen oxides and carbon monoxide were evaluated during the permit review process.

Anadarko Gathering Company, Liberal, owns and operates the stationary source to be located at NW $\frac{1}{4}$ , Section 20, Township 33 South, Range 40 West, Morton County, at which the compressor engines are to be installed.

A copy of the proposed permit, permit application, all supporting documentation and all information relied upon during review of the permit application is available for public inspection during normal business hours at the KDHE, Bureau of Air and Radiation, Building 283, Forbes Field, Topeka, and at the KDHE southwest district office, 302 W. McArtor, Dodge City. To obtain or review the proposed permit and supporting documentation, contact Shawn Howell, (785) 296-1993, at the KDHE central office, or Wayne Neese, (316) 225-0596, at the KDHE southwest district office. The standard departmental cost will be assessed for any copies requested.

Direct written comments or questions regarding the proposed permit to Shawn Howell, KDHE, Bureau of Air and Radiation, Building 283, Forbes Field, Topeka, 66620. Written comments must be received by the close of business September 15 in order to be considered in formulating a final permit decision.

A person may request a public hearing be conducted on the proposed permit. The request for a public hearing shall be in writing and set forth the basis for the request. The written request must be submitted to Connie Carreno, Bureau of Air and Radiation, not later than the close of business September 15 in order for the Secretary of Health and Environment to consider the request.

Gary R. Mitchell  
Secretary of Health  
and Environment

Doc. No. 019525

## State of Kansas

**Department of Health  
and Environment****Clarification to Notice of Hearing on  
Proposed Administrative Regulations**

The Kansas Department of Health and Environment, Division of Environment, Bureau of Air and Radiation previously published a notice of hearing (June 26 Kansas Register) pertaining to the adoption of new air quality regulations. The notice stated, among other details, that the department will conduct a public hearing at 1 p.m. Tuesday, August 27, in the KDHE main conference room, Building 283, Forbes Field, Topeka, to consider the adoption of new permanent air quality regulations K.A.R. 28-19-721 to 727, and to consider the adoption of a Municipal Solid Waste Landfill Emissions Implementation Plan. These air quality regulations will establish standards for the control of emissions from certain existing municipal solid waste landfills. Subsequent to that notice, KDHE has received comment from the Joint Committee on Administrative Rules and Regulations to provide clarification of the intent of K.A.R. 28-19-722, which would be of assistance to the public and the regulated community. The purpose of this notice is to provide that clarification.

In the summary of the content of proposed new K.A.R. 28-19-722, an exemption for certain landfills was noted. This summary is being clarified to read as follows (clarifying language is in italics):

*K.A.R. 28-19-722 establishes criteria for determining which existing landfills will be affected by the proposed regulations. These criteria include date construction or modifications occurred; whether the landfill has accepted waste since November 8, 1987, or has additional capacity; and whether the landfill has a design capacity greater than or equal to 2.5 million megagrams. In addition, this regulation includes a paragraph stating that landfills that qualify for the small landfill exemption (received less than 20 tons per day, and received certificate of closure from the department before effective date of this regulation) are exempted from the rule. Landfills that qualify for the small landfill exemption based upon quantity of waste received per day, but that have not closed, while not categorically exempted from the regulation, receive waste in such small quantities that they would not be subject to the initial notification or any other requirement of the proposed regulations. They would only have to maintain documentation that the design capacity of the landfill is less than 2.5 million megagrams.*

All other information remains as previously published. KDHE does not view this clarification as altering the substance or impact of the regulation. While small exempt landfills in Kansas, as defined under K.A.R. 28-29-103, would not be categorically exempt, such landfills will not have design capacities that approach 2.5 million megagrams, and therefore will not meet the criteria required to trigger the applicability of the regulation to such landfills. The 20 ton/day limitation creates a de facto limit under which this regulation excludes such landfills from

having to comply with the substantive requirements of the regulation.

In order to assure opportunity for comment on the provisions of this regulation in relation to small landfills, KDHE is extending the comment period a full 30 days beyond the public hearing. Questions pertaining to this notice may be directed to Gary Miller at (785) 296-1547 or Tom Gross at (785) 296-1692.

Gary R. Mitchell  
Secretary of Health  
and Environment

Doc. No. 019526

State of Kansas

Department of Health  
and Environment

Notice Concerning Kansas  
Water Pollution Control Permits

In accordance with state regulations 28-16-57 through 63, 28-18-1 through 4, 28-16-150 through 154, 28-46-7, and the authority vested with the state by the administrator of the U.S. Environmental Protection Agency, draft permits have been prepared for discharges to the waters of the United States and the State of Kansas for the class of dischargers described below. The determinations for permit content are based on staff review, applying the appropriate standards, regulations and effluent limitations of the State of Kansas and the EPA, and when issued will result in a state water pollution control permit and national pollutant discharge elimination system authorization subject to certain conditions.

Public Notice No. KS-97-121/123

Name and Address of Applicant	Waterway	Type of Discharge
City of McPherson c/o Steve Gorszczyk P.O. Box 1008 McPherson, KS 67460	Little Arkansas River via Turkey Creek via Dry Turkey Creek	Treated domestic wastewater
Kansas Permit No. M-LA11-OO01      Federal Permit No. KS0036196		
Location: SE ¼, Section 33, Township 19S, Range 3W, McPherson County		

Facility Description: The proposed action is to re-issue an existing permit for operation of an existing wastewater treatment facility treating domestic wastewater. The primary wastewater treatment equipment consists of a three-unit sequencing batch reactor, aerobic sludge digestion with gravity belt thickening, and UV disinfection. Treated wastewater is used for golf course irrigation and also is discharged to Dry Turkey Creek. The proposed permit includes a schedule of compliance to disinfect the effluent discharged to Dry Turkey Creek. The permit requirements are pursuant to Kansas surface water quality standards, K.A.R. 28-16-28(b-f), and federal surface water criteria, and are water quality based.

Name and Address of Applicant	Waterway	Type of Discharge
Allen County Commissioners c/o Allen County Clerk 1 N. Washington Iola, KS 66749	Neosho River via Rock Creek	Treated domestic wastewater
Kansas Permit No. M-NE37-OO02      Federal Permit No. KS0085201		
Location: SW ¼, Section 30, Township 24S, Range 19E, Allen County		
Facility Name: Allen County S.D. #1		

Facility Description: The proposed action is to re-issue an existing permit for operation of an existing wastewater treatment facility treating domestic wastewater. The facility consists of a three-cell wastewater lagoon. The permit requirements are pursuant to Kansas surface water quality standards, K.A.R. 28-16-28(b-f), and federal surface water criteria, and are technology based.

Name and Address of Applicant	Waterway	Type of Discharge
Kansas Pipeline Operating Co. 8325 Lenexa Drive Suite 400 Lenexa, KS 66214	Fall River via east branch	Hydrotest wastewater
Kansas Permit No. I-VE16-PO03		
Location: NE ¼, Section 24, Township 25S, Range 9E, Greenwood County		

Facility Description: The proposed action is to issue a new permit for a discharge of wastewater from a hydrotest of an existing natural gas pipeline. Water used during the hydrostatic test will be taken from and returned to the east branch of the Fall River. Prior to discharge, the hydrostatic test water will pass through hay bales to filter out excessive oil, grease and suspended solids. About 325,000 gallons of wastewater will be discharged at a rate of 500 gpm. The permit requirements are pursuant to Kansas surface water quality standards, K.A.R. 28-116-28(b-f), and federal surface water criteria, and are water quality based.

Written comments on the draft permits must be submitted to the attention of Lisa Duncan for agricultural permits or to the permit clerk for all other permits, Kansas Department of Health and Environment, Division of Environment, Bureau of Water, J Street and 2 North, Forbes Field, Building 283, Topeka, 66620. All comments post-marked or received on or before September 12 will be considered in the formulation of final determinations regarding this public notice. Please refer to the appropriate public notice number (KS-97-121/123) and the name of applicant as listed when preparing comments.

If no objections are received during the public notice period, the Secretary of Health and Environment will issue the final determination. If response to this notice indicates significant public interest, a public hearing may be held in conformance with state regulation 28-16-61 (28-46-21 for UIC). Media coordination for publication and/or announcement of the public notice or public hearing is handled by the Kansas Department of Health and Environment.

The applications, proposed permits, including proposed effluent limitations and special conditions, fact sheets as appropriate, comments received, and other information are on file and may be inspected at the Kansas Department of Health and Environment offices, Building 283, Forbes Field, Topeka, from 8 a.m. to 5 p.m. Monday through Friday. These documents are available upon request at the copying cost assessed by KDHE. Additional copies of this public notice also may be obtained at the Division of Environment.

Gary R. Mitchell  
Secretary of Health  
and Environment

Doc. No. 019521

## State of Kansas

**Kansas Advocacy and Protective Services, Inc.****Request for Comments**

The public is provided with the opportunity to comment on the priorities and objectives of Kansas Advocacy and Protective Services, Inc., relating to protection and advocacy for individuals with developmental disabilities and protection and advocacy for individual rights. A 45-day period for public comment extends through September 30. Copies of materials describing priorities and objectives for the program may be obtained by contacting Kansas Advocacy and Protective Services, Inc., 2601 Anderson Ave., Suite 200, Manhattan, 66502-2876, 1-800-432-8276 (Voice/TDD).

Jim Germer  
Director

Doc. No. 019499

## State of Kansas

**Department of Health and Environment****Notice of Hearing on Proposed Administrative Regulations**

The Kansas Department of Health and Environment, Division of Health, Office of Epidemiologic Services will conduct a public hearing at 10 a.m. Tuesday, October 21, in Room 1051 South, Landon State Office Building, 900 S.W. Jackson, Topeka, to consider adoption of proposed amended K.A.R. 28-1-2 and 28-1-18, disease control. A summary of the proposed changes in the regulations and their economic impact follow.

K.A.R. 28-1-2 and K.A.R. 28-1-18 both deal with diseases reportable to local health departments and the KDHE. K.A.R. 28-1-2 includes the list of diseases reportable by physicians, while K.A.R. 28-1-18 includes the list of diseases reportable by laboratories. Virtually all these diseases are infectious. These lists need to be updated periodically to reflect changes in diagnostic tests and in the list of national notifiable diseases maintained by the Council of State and Territorial Epidemiologists.

Until now, most disease reports have been sent by physicians, upon diagnosis of the condition being reported. Changes in clinical practices in recent years have given clinical laboratories a growing role in the diagnosis of infectious diseases, and today almost all these diseases require a laboratory test to confirm the diagnosis. As a result, laboratories represent an important source of good and timely information on diseases of public health importance.

The existence of two different lists of reportable diseases (one for physicians, the other for laboratories), beside having no current justification, has been a cause of confusion for health professionals and institutions, who often are unclear as to what needs to be reported by whom. The changes proposed in the two regulations acknowledge the importance of laboratory tests in the current diagnosis of infectious diseases, and would reduce

the existing confusion by adopting one list of reportable diseases for both physicians and laboratories, leaving only a few additional diseases that, due to their clinical characteristics, would remain reportable only for laboratories. In addition, laboratories will be required to submit isolates of cultures of few selected microorganisms of public health importance to the Kansas Health and Environmental Laboratory for special tests (e.g., DNA fingerprinting, antimicrobial resistance) that are not routinely carried out at commercial clinical laboratories.

**Economic Impact:** In general, there will be no added costs to KDHE or other governmental agencies. Clinical laboratories will be required to report cases for more diseases than currently. It is estimated that about 1500 new reports will be sent by laboratories to KDHE every year. Given that most laboratories have computerized data storage systems, the cost of generating and mailing these reports should be around \$0.75 per report, for a total of \$1,125 per year distributed across all the commercial laboratories in the state. KDHE also is promoting electronic and confidential fax data transmission from laboratories and other providers, which will help reduce the cost of the transmission of the reports. In addition, laboratories will be required to send to the Kansas Health and Environment Laboratory some isolates. Many laboratories already send (upon request) some of these isolates. It is projected that 300 more isolates will be sent to KDHE as a result of this regulation. It is estimated that the cost to send one isolate is about \$5 (including paperwork, staff time, and postage). Therefore, the additional cost of sending isolates for all the commercial laboratories in the state will be about \$1,500 per year.

The time between the publication of this notice and the scheduled hearing constitutes a public comment period for the purpose of receiving written public comments on the proposed regulatory action. All interested parties may submit written comments prior to the hearing to Corinne Miller, Office of Epidemiologic Services, Room 1051-S, Landon State Office Building, 900 S.W. Jackson, Topeka, 66612-1290. All interested parties will be given a reasonable opportunity to present their views orally on the proposed regulatory action during the hearings. To give all parties an opportunity to present their views, it may be necessary to require each participant to limit any oral presentation to five minutes.

Copies of the proposed amendments and the economic impact statement may be obtained from the Kansas Department of Health and Environment, Office of Epidemiologic Services, (785) 296-1113. Questions pertaining to these proposed amendments should be directed to Dr. Gianfranco Pezzino, (785) 296-6215.

Any individual with a disability may request accommodation in order to participate in the public hearing and may request the proposed amendments and the economic impact statement in an accessible format. Requests for accommodation should be made at least five working days in advance of the hearing by contacting Corinne Miller, (913) 296-6215.

Gary R. Mitchell  
Secretary of Health  
and Environment

Doc. No. 019527

State of Kansas

Department of Administration  
Division of Purchases

Notice to Bidders

Sealed bids for the following items will be received by the Director of Purchases, Landon State Office Building, 900 S.W. Jackson, Room 102, Topeka, until 2 p.m. on the date indicated and then will be publicly opened. Interested bidders may call (913) 296-2377 for additional information:

Monday, August 25, 1997

32635

Department of Human Resources—Clotting factors and related products

32637

Department of Administration, Central Motor Pool—Vehicle preventive maintenance service (Junction City)

32645

University of Kansas Medical Center—Coarse paper products

32651

Department of Social and Rehabilitation Services—Janitorial services, Leavenworth

6447

Pittsburg State University—NMR spectrometer

6448

Kansas State University—HPLC, new or used

6460

Kansas State University—Gas chromatograph

Tuesday, August 26, 1997

32646

Emporia State University—Elevator service

32647

Kansas State University—September 1997 meat products

6439

Hutchinson Correctional Facility—Plumbing materials

6440

Hutchinson Correctional Facility—Plumbing materials

Wednesday, August 27, 1997

32643

Adjutant General's Department—Janitorial services, Salina

Thursday, August 28, 1997

A-8256

Fort Hays State University—Partial roof repairs, West Hall

32649

State Corporation Commission—Well plugging, Jackson Lease

6449

Kansas Correctional Industries—Rutile titanium dioxide

6450

Department of Social and Rehabilitation Services—Mail processing equipment

Friday, August 29, 1997

32650

State Corporation Commission—Well plugging, Olson, Manion, Stoll Lease Project

6451

Department of Social and Rehabilitation Services—Handicapped van modification, Prairie Village

6452

University of Kansas Medical Center—Animal cages

6458

Pittsburg State University—Furnish and install security camera system

6459

Adjutant General's Department—Miscellaneous shop tools, Ft. Riley

Wednesday, September 3, 1997

A-8322

Kansas State University—Partial interior remodel, second floor, Justin Hall

A-8325

Kansas State University—ADA sidewalk improvements

A-8382

Hutchinson Correctional Facility—32-bed addition, Minimum Security Unit-South

Thursday, September 4, 1997

A-8233

Kansas State University—Elevator addition and remodel, Kedzie Hall

Friday, September 5, 1997

A-8278

Kansas Highway Patrol—Reroof auditorium, Administration Building

A-8393

Department of Administration, Division of Facilities Management—Roof replacement, north and south wings, Landon State Office Building

Tuesday, September 9, 1997

A-8286

Fort Hays State University—Entrance modifications, Martin-Allen Hall

\*\*\*\*\*

Request for Proposals

Wednesday, September 3, 1997

32644

Agent licensing examination services for the Kansas Insurance Department

Thursday, September 4, 1997

32648

Conference coordination and training session for the Department of Social and Rehabilitation Services

John T. Houlihan  
Director of Purchases

Doc. No. 019532

State of Kansas

**Office of Judicial Administration  
Court of Appeals Docket**

(Note: Dates and times of arguments are subject to change.)

Kansas Court of Appeals  
Court of Appeals Courtroom  
Kansas Judicial Center  
301 W. 10th Ave.  
Topeka, Kansas

Before Lewis, P.J.; Gernon, J.; and Charles E. Worden, D.J., assigned.

Tuesday, August 26, 1997

9:00 a.m.

Case No.	Case Name	Attorneys	County
76,352	DPR, Inc., a Kansas Corporation, d/b/a Pat's Lounge; and Patricia Rohrbaugh as President of DPR, Inc.; and Don Rohrbaugh, as Secretary/Treasurer of DPR, Inc., Appellant, v. City of Pittsburg, Kansas, Appellee.	C.A. Menghini William J. Pauzauskie Donald L. Moler	Crawford
76,347	State of Kansas, Appellee, v. Daniel T. Koch, Appellant.	Attorney General William C. O'Keefe, C.A. John J. Ambrosio Steven P. Deiter	Nemaha
76,688	Dana R. Rockers, Appellant, v. Kansas Turnpike Authority, Appellee.	10:30 a.m. David O. Alegria Eugene C. Riling Paul V. Dugan Teresa L. Sittenauer	Shawnee
76,870	In the Matter of the Appeal of Alsop Sand Company, Inc. From a Notice of Assessment of Sales and Compensating Taxes.	1:30 p.m. John Michael Hale Derrick L. Roberson	Tax Appeal
78,270	State of Kansas, Appellant, v. Christine Reutebuch, a/k/a Christine Sebastian, a/k/a Christine Silk, Appellee.	Attorney General Thomas Alongi, Asst. C.A. Ronald L. Hodgson	Geary
75,599	State of Kansas, Appellee, v. Joyce Mincey, Appellant.	2:45 p.m. Attorney General Eric K. Rucker, C.A. Steven R. Zinn, Deputy A.D.	Dickinson

Wednesday, August 27, 1997

9:00 a.m.

Case No.	Case Name	Attorneys	County
75,070	State of Kansas, Appellee, v. James L. Swink, Appellant.	Attorney General John J. Gillett, C.A. Jessica R. Kunen, Chief A.D. Hazel Haupt, Asst. A.D.	Wilson

78,546	State of Kansas, ex rel., Secretary of Social and Rehabilitation Services, Assignee of Kimberly A. Painter, and as Parent and Next Friend of Seth Snethen, a Minor Child, Appellant, v. Sean K. Snethen, Appellee.	Craig E. Collins Janet C. Walsh J. Marcus Goodman	Osage
10:30 a.m.			
76,096	Noel M. Klein, Appellant, v. University of Kansas Medical Center, Appellee.	Daniel J. Carroll John B. Gage II John C. McFadden	Shawnee
<b>Summary Calendar—No Oral Argument</b>			
77,109	Patrick E. Wiles, Appellant, v. State of Kansas, Appellee.	Attorney General David P. Zabel, Asst. D.A. Jessica R. Kunen, Chief A.D. Lisa Nathanson, Asst. A.D.	Douglas
77,502	Transportation Systems, Inc., Appellant, v. Capital Associates of Jackson County, Inc., Appellee.	Ray E. Sousley Joanne B. Stutz	Johnson
77,489	Jeremiah P. Podlena, Appellant, v. Michael D. Atwood, M.D., Appellee.	Leonard M. Robinson Thomas L. Theis	Shawnee
78,500	In the Matter of E.W. III.	Kathleen Downey James A. Brown, Asst. D.A.	Shawnee
76,528 76,529	State of Kansas, Appellee, v. Frank E. Freeman, Appellant.	Attorney General Patrick E. D'Arcy Delia M. York, Asst. D.A. Joseph A. McMillen	Wyandotte
77,503	Arthur P. Taliaferro, M.D., Appellant, v. State Board of Healing Arts, Appellee.	A.P. Taliaferro, pro se Mark W. Stafford	Shawnee

**Kansas Court of Appeals  
Sedgwick County Courthouse  
Courtroom 11-1, 525 N. Main  
Wichita, Kansas**

**Before Brazil, C.J.; Rulon, J.; and Paddock, S.J.**

**Tuesday, August 26, 1997**

**9:00 a.m.**

Case No.	Case Name	Attorneys	County
75,888	La Macy Woods, Appellant, v. State of Kansas, Appellee.	Aronda Strutt Kerns Attorney General Debra S. Peterson, Asst. D.A. David Lowden, Asst. D.A.	Sedgwick
75,517	State of Kansas, Appellee, v. Dale E. Tucker, Appellant.	Attorney General Debra S. Peterson, Asst. D.A. Jessica R. Kunen, Chief A.D. Jean K. Gilles Phillips, Asst. A.D.	Sedgwick
76,373	Ralph Becker, Claimant, Appellant, v. Ralph Becker, Respondent, and Cigna, Insurance Carrier, Appellees, and Workers Compensation Fund, Appellant.	Norman R. Kelly John W. Mize John Sherman	Work Comp

(continued)



		11:00 a.m.	
76,254	In the Matter of the Estate of Edward A. Maxedon, Deceased.	John V. Black Dennis L. Gillen Jack Scott McInteer Clark Green Ronald B. Rose	Kingman
1:30 p.m.			
75,257	State of Kansas, Appellee, v. Walter J. Brumbelow, Appellant.	Attorney General Debra S. Peterson, Asst. D.A. Jessica R. Kunen, Chief A.D. Thomas R. Bartee, Asst. A.D.	Sedgwick
77,771	State of Kansas, Appellee, v. Ronald E. Kelley, Sr., Appellant.	Attorney General Jon Satterfield, Asst. C.A. Jessica R. Kunen, Chief A.D. Janine Cox, Asst. A.D.	Butler

Wednesday, August 27, 1997

		9:00 a.m.	
Case No.	Case Name	Attorneys	County
77,149	Alyce I. Marsee, Appellant, v. Hampton W. Anderson III, Appellee.	Mark T. Schoenhofer	Sedgwick
77,939	In the Interest of C.D.W., d/o/b: 09/22/92, a Minor Child Under 18 Years of Age.	Dana M. Harris Kim Christiansen Richard A. Macias Charles M. Cline, Jr.	Sedgwick
10:30 a.m.			
75,747	State of Kansas, Appellee, v. Steven Douglas Allen, Appellant.	Attorney General Jennifer M. Wieland, Asst. C.A. Jessica R. Kunen, Chief A.D. Paul S. Bassett, Special A.D.	Harvey

Summary Calendar—No Oral Argument

77,290	Robert E. Dobrzanski, Appellant, v. Robert D. Hannigan, Appellee.	Robert E. Dobrzanski, pro se Attorney General Jon D. Graves	Reno
78,520	In the Interest of H.L.P., d/o/b: 01/12/85; P.K.P., d/o/b: 01/20/86; Minor Children Under the Age of 18 Years.	Verlin A. Ingram Kevin B. Johnson Roger Batt Becky C. Hurtig	Sedgwick
76,835	Hai Van Nguyen, Appellant, v. State of Kansas, Appellee.	Attorney General Scott M. Schultz, Asst. C.A. Jessica R. Kunen, Chief A.D. Alice A. Craig, Asst. A.D.	Finney
77,285	State of Kansas, Appellee, v. Dana Louis Frey, Appellant.	Attorney General Steven C. Staker, Asst. C.A. Gary D. Denning	Saline
76,863	State of Kansas, Appellee, v. Robert C. Hooper, Appellant.	Attorney General Debra S. Peterson, Asst. D.A. Robb W. Rumsey	Sedgwick
77,001	In the Interest of R.A.M., d/o/b: 11/02/84, et al., Minor Children Under the Age of 18.	Larry J. Bachura Pamela J. Guizlo Barbara L. James James Ward	Sedgwick

Kansas Court of Appeals  
Old Sedgwick County Courthouse  
510 N. Main, 3rd Floor  
Wichita, Kansas

Before Green, P.J.; Royse, J.; and Wahl, S.J.

Tuesday, August 26, 1997

9:00 a.m.

Case No.	Case Name	Attorneys	County
74,581	Marla Floyd and Gary Floyd, Appellants, v. General Motors Corporation; Goff Motors, Inc; and Christopher Pontiac, Inc., Appellees.	James J. McGannon Larry Withers	Sedgwick
76,620	Larry J. Simmons, Appellee, v. Sim Park Golf Course, and Northwestern National Casualty and Workers Compensation Fund, Appellants.	Gary A. Winfrey Donald N. Peterson II James A. Cline Scott J. Marn	Work Comp
10:30 a.m.			
76,303	Tony Reddick, Appellant, v. State Department of Social and Rehabilitation Services, Appellee.	Kiehl Rathbun Ellen G. Neufeld	Sumner
1:30 p.m.			
76,480	State of Kansas, Appellee, v. Steven G. Beard, Appellant.	Attorney General Debra S. Peterson, Asst. D.A. Jessica R. Kunen, Chief A.D. Lisa Nathanson, Asst. A.D.	Sedgwick
75,987	State of Kansas, Appellee, v. David F. Winfrey, Appellant.	Attorney General Debra S. Peterson, Asst. D.A. Doyle Baker, Asst. D.A. Jessica R. Kunen, Chief A.D. Elizabeth Seale Cateforis, Asst. A.D.	Sedgwick
2:45 p.m.			
75,361	State of Kansas, Appellee, v. David Lane, Appellant.	Attorney General Debra S. Peterson, Asst. D.A. David Lowden, Asst. D.A. Kevin Loeffler	Sedgwick

Wednesday, August 27, 1997

9:00 a.m.

Case No.	Case Name	Attorneys	County
76,237	James L. Landers, Appellant, v. State of Kansas, Appellee.	Roger L. Falk Attorney General Debra S. Peterson, Asst. D.A.	Sedgwick
77,240	Edward M. Dumbauld, Appellee, v. Beech Aircraft Corporation (Self-Insured), Appellant, and the Workers Compensation Fund, Appellee.	Edward D. Heath, Jr. Bill H. Raymond Terry J. Torline	Work Comp

(continued)

10:45 a.m.

76,201	State of Kansas, Appellee, v. Nikki L. Lafoe, Appellant.	Attorney General Debra S. Peterson, Asst. D.A. Thomas J. Schultz, Asst. D.A. Jessica R. Kunen, Chief A.D. Debra J. Wilson, Asst. A.D.	Sedgwick
--------	--	---	----------

## Summary Calendar—No Oral Argument

77,418	Eric A. Voth, Appellant, v. Larry D. Coleman, Mary C. Jackson, Rosie M. Quinn, Richard Carney, Hosea Ellis Sowell, and Arthur P. Taliaferro, Appellees.	David R. Cooper Larry D. Coleman, pro se Vernon Lewis Rosie M. Quinn, pro se A.P. Taliaferro, M.D., pro se	Shawnee
77,914	In the Interest of C.G.C., d/o/b: 07/06/88, a Minor Child Under 18 Years of Age.	Gerald J. Domitrovic Becky C. Hurtig Kevin B. Johnson Marjorie Phares	Sedgwick
76,973	Francis Nemechek, #31327, Appellant, v. David R. McKune, et al., Appellees.	Cheryl A. Marquardt John R. Dowell, Asst. A.G. James W. Coder, Asst. A.G.	Leavenworth
77,641	Knutson Mortgage Corporation (Shapiro & Reid and Richard L. Reid), Appellants, v. James C. Coleman, et al., Appellees.	Ron D. Beal	Sedgwick
77,725	Mário Rico, Appellant, v. Excel Corporation, Respondent and Self-Insured, Appellee.	Ed L. Randels Stanley R. Ausemus D. Shane Bangerter Stephen M. Kerwick	Work Comp
78,415	In the Interest of J.N.R., d/o/b: 02/16/94, a Child Under 18 Years of Age.	Mary A. McDonald, C.A. Bradley D. Jantz Randall J. Pankratz	Harvey

**Kansas Court of Appeals  
Commission Meeting Room, 2nd Floor  
Old Douglas County Courthouse  
1100 Massachusetts  
Lawrence, Kansas**

**Before Pierron, P.J.; Elliott, J.; and David W. Kennedy, D.J., assigned.**

**Tuesday, August 26, 1997**

9:00 a.m.

Case No.	Case Name	Attorneys	County
77,353	In the Matter of the Marriage of Manijeh Zandi, Appellee, and Homayoun Nik-Khah, Appellant.	David J. Berkowitz Homayoun Nik-Khah, pro se	Douglas
77,976	In the Matter of R.L.W., Jr., Respondent.	Mark Davis Victoria S. Meyer, Asst. D.A.	Wyandotte

10:30 a.m.

78,550	Leanne Fuller, Appellee, v. Stephen Bradley Small, Appellant.	David M. Bryan Gordon N. Myerson	Johnson
--------	---	-------------------------------------	---------

1:30 p.m.

78,518 In the Matter of the Marriage of Blake Ashley Hedges, Appellant, and Kathryn K. Hedges, n/k/a Kathryn K. King, Appellee. Andrew R. Ramirez  
Laura Burney  
David J. Brown  
Sherri E. Loveland Douglas

2:45 p.m.

76,569 Edward W. Green, Appellant,  
v.  
Colgate Palmolive Company, Liberty Mutual Insurance Company, and Kansas Workers Compensation Fund, Appellees. David O. Alegria  
Stephanie Warmund  
Jeffrey S. Austin Work Comp

Wednesday, August 27, 1997

9:00 a.m.

Case No.	Case Name	Attorneys	County
78,236	In the Matter of A.K.S., Respondent, d/o/b: 02/01/83.	Jeanne Gorman Rau Terra D. Morehead, Asst. D.A. Carl E. Cornwell	Wyandotte
75,550 76,585	In the Matter of the Marriage of Marla S. Schanze (formerly Doeren), Appellee, and Roger Doeren, Appellant.	J. Bradley Short Jill C. Allison Mark A. Corder Ray E. Sousley	Johnson
75,847	State of Kansas, Appellee, v. David H. Johnston, Appellant.	Attorney General Steven J. Obermeier, Asst. D.A. Darrell Smith	Johnson

10:45 a.m.

75,149	State of Kansas, Appellee, v. David Lee Jones, Appellant.	Attorney General Steven J. Obermeier, Asst. D.A. Jessica R. Kunen, Chief A.D. Jean K. Gilles Phillips, Asst. A.D.	Johnson
--------	---	--	---------

## Summary Calendar—No Oral Argument

75,814	John P. Parr and Jane L. Parr, Appellees, v. J.E. Marks Construction, Inc., et al., Appellants.	Daniel Church Larry D. Fields Michael A. Childs	Johnson
76,400	State of Kansas, Appellee, v. Michael G. Wilson, Appellant.	Attorney General Steven J. Obermeier, Asst. D.A. William P. Turner	Johnson
76,041	State of Kansas, Appellee, v. Richard J. Manion, Appellant.	Attorney General Steven J. Obermeier, Asst. D.A. Jessica R. Kunen, Chief A.D. Edward G. Collister, Jr., Special A.D.	Johnson
77,451	In the Matter of B.A.M., d/o/b: 10/31/79.	Mary Stephenson Hosack, Asst. D.A. Kathleen L. Sloan	Johnson
77,264	State of Kansas, Appellee, v. Reuben G. Payne, Appellant.	Attorney General Sheryl L. Lidtke, Asst. D.A. Jessica R. Kunen, Chief A.D. Ryan Kipling Elliott, Asst. A.D.	Wyandotte
76,582	State of Kansas, Appellee, v. Glennon E. Robinson, Appellant.	Attorney General Steven J. Obermeier, Asst. D.A. Jessica R. Kunen, Chief A.D. Lisa Nathanson, Asst. A.D.	Johnson

Carol G. Green  
Clerk of the Appellate Courts

## State of Kansas

## Department of Administration

## Public Notice

Under requirements of K.S.A. 1996 Supp. 65-34,117(c), records of the Division of Accounts and Reports show the unobligated balances are \$1,719,906.64 in the underground petroleum storage tank release trust fund and \$336,955.72 in the aboveground petroleum storage tank release trust fund at July 31, 1997.

Daniel R. Stanley  
Secretary of Administration

Doc. No. 019509

## State of Kansas

## Kansas Commission on Governmental Standards and Conduct

## Advisory Opinion No. 97-29

Written July 8, 1997, to Douglas L. Klaassen, Mayor-Commissioner, City of Chanute.

This opinion is in response to your letter of June 17, 1997, in which you request an opinion from the Kansas Commission on Governmental Standards and Conduct concerning the local level conflict of interest laws (K.S.A. 75-4301a *et seq.*). We note at the outset that the commission's jurisdiction is limited to the application of K.S.A. 75-4301a *et seq.*, and whether some other statutory system, common law theory or agency rule and regulation applies to your inquiry is not covered by this opinion.

## Factual Statement

We understand you request this opinion in your capacity as mayor-commissioner for the City of Chanute. You advise us that you are a 51 percent shareholder of a Sub-S corporation and the sole employee. As such, you perform professional services to several companies in the community, on both a retainer fee and an hourly rate. You receive a monthly salary in addition to dividends and other distributions from the corporation. The annual payments from a given company to the corporation may exceed \$2,000 per year.

## Question

From what types of issues related to the customers of the Sub-S corporation must you abstain from voting on as the mayor-commissioner?

## Opinion

K.S.A. 75-4301a(a) states:

"Substantial interest" means any of the following: (1) If an individual or an individual's spouse, either individually or collectively, has owned within the preceding 12 months a legal or equitable interest exceeding \$5,000 or 5% of any business, whichever is less, the individual has a substantial interest in that business.

(2) If an individual or an individual's spouse, either individually or collectively, has received during the preceding calendar year compensation which is or will be required to be included as taxable income on federal income tax returns of the individual and spouse in an aggregate

amount of \$2,000 from any business or combination of businesses, the individual has a substantial interest in that business or combination of businesses.

(3) If an individual or an individual's spouse, either individually or collectively, has received in the preceding 12 months, without reasonable and valuable consideration, goods or services having an aggregate value of \$500 or more from a business or combination of businesses, the individual has a substantial interest in that business or combination of businesses.

(4) If an individual or an individual's spouse holds the position of officer, director, associate, partner or proprietor of any business, other than an organization exempt from federal taxation of corporations under section 501 (c) (3), (4), (6), (7), (8), (10) or (19) of chapter 26 of the United States code, the individual has a substantial interest in that business, irrespective of the amount of compensation received by the individual or individual's spouse.

(5) If an individual or an individual's spouse receives compensation which is a portion or percentage of each separate fee or commission paid to a business or combination of businesses, the individual has a substantial interest in any client or customer who pays fees or commissions to the business or combination of businesses from which fees or commissions the individual or the individual's spouse, either individually or collectively, received an aggregate of \$2,000 or more in the preceding calendar year.

As used in this subsection, "client or customer" means a business or combination of businesses.

K.S.A. 75-4304, subsections (a), (c) and (d) state:

(a) No local governmental officer or employee shall, in the capacity of such an officer or employee, make or participate in the making of a contract with any person or business by which the officer or employee is employed or in whose business the officer or employee has a substantial interest.

(c) A local governmental officer or employee does not make or participate in the making of a contract if the officer or employee abstains from any action in regard to the contract.

(d) This section shall not apply to the following:

(1) Contracts let after competitive bidding has been advertised for by published notice; and

(2) contracts for property or services for which the price or rate is fixed by law.

As a general rule, unless the contract is competitively bid or the price or rate is fixed by law, a local governmental officer or employee could not, in that capacity, participate in the making of a contract with a "person" or "business" in which a "substantial interest" is held.

Turning to your question, you could not vote on any contracts, unless one of the exceptions set out above applies, between the city and any customer of the corporation who paid fees in an amount such that the dividends and distributions you receive would equal \$2,000 or more during the preceding calendar year.

## Advisory Opinion No. 97-30

Written July 8, 1997, to the Honorable Tom Sloan, Kansas State Representative, 45th District, Lawrence.

This opinion is in response to your letter of June 3, 1997, in which you request an opinion from the Kansas Commission on Governmental Standards and Conduct concerning the state level conflict of interest laws (K.S.A. 46-215 *et seq.*). We note at the outset that the commission's jurisdiction is limited to the application of K.S.A. 46-215 *et seq.*, and whether some other statutory system, common law theory, or agency rule and regulation applies to your inquiry is not covered by this opinion.

#### Factual Statement

We understand you request this opinion in your capacity as a Kansas state representative. You have been asked to deliver the keynote presentation at the School Librarian Media Specialists Summer Institute in Emporia, Kansas, on June 11, 1997. The institute focuses on trends, teaching and technology available to library media specialists. You are scheduled to speak for 1½ hours on educational legislation enacted in the past two legislative sessions, as well as anticipated issues in 1998.

You further advise us that since you are not a member of the House Education Committee, a great deal of preparation on your part will be necessary in a short amount of time. In addition, preparing for this presentation will take significant time away from your private sector business.

The institute has offered a \$400 honorarium plus a mileage expense reimbursement. You have informed the Institute that you could not accept the honorarium without prior approval from this commission, and that this decision would not be reached prior to the presentation date. Thus, the Institute will compensate you for the amount approved at a later date.

#### Question

Is it permissible for you to accept the \$400 honorarium for delivering the keynote presentation for the School Librarian Media Specialists Summer Institute?

#### Opinion

K.S.A. 46-237(f) applies to your question. That subsection states:

No state officer or employee shall accept any payment of honoraria for any speaking engagement except that a member of the state legislature or a part-time officer or employee of the executive branch of government shall be allowed to receive reimbursement in the preparation for and the making of a presentation at a speaking engagement in an amount fixed by the Kansas commission on governmental standards and conduct prior to the acceptance of the speaking engagement. Nothing in this section shall be construed to prohibit the reimbursement of state officers and employees for reasonable expenses incurred in attending seminars, conferences and other speaking engagements.

In KCGSC Opinion No. 91-21, the commission opined that the amount of honorarium that could be paid to a legislator for the preparation and presentation of materials at a speaking engagement would depend on the following factors: amount of preparation, complexity of issues, qualifications of the presenter and the extent of the presenter's participation in the event. The commission

stated that it would "... presume a maximum of \$50 for preparation and a maximum of \$50 for presentation. ..." Anyone seeking an additional amount "... will have to request a waiver."

Applying the factors outlined in KCGSC Opinion No. 91-21 to the brief information you provided in your opinion request, the commission believes the monetary limits set out in that opinion should not be waived. If you have any additional information you wish to present to the commission, you are invited to do so. Thus, you could accept up to \$100 for delivering the keynote presentation.

In closing, the commission notes that since you are providing a bona fide speaking service at the seminar, the institute could pay for all of your reasonable travel expenses.

#### Advisory Opinion No. 97-31

Written July 8, 1997, to Connie Owen, Treasurer for Dan Owen, Shawnee Mission.

This opinion is in response to your letter of June 19, 1997, in which you request an opinion from the Kansas Commission on Governmental Standards and Conduct concerning the Kansas Campaign Finance Act (K.S.A. 25-4142 *et seq.*). We note at the outset that the commission's jurisdiction is limited to the application of K.S.A. 25-4142 *et seq.*, and whether some other statutory system, common law theory or agency rule and regulation applies to your inquiry is not covered by this opinion.

#### Factual Statement

We understand you request this opinion in your capacity as the treasurer for the Owen for District Attorney campaign. You advise us that your spouse unsuccessfully ran for Douglas County District Attorney. During the course of the campaign, expenses were incurred that exceeded the amount of money in the campaign bank account. The campaign has paid off as much debt as it could, and the account is now exhausted. Two creditors remain unsatisfied, with one of the creditors now threatening legal action to collect the debt.

#### Question

Under the Kansas Campaign Finance Act (K.S.A. 25-4142 *et seq.*), are the candidate and/or treasurer personally liable for debts incurred by the campaign?

#### Opinion

The commission has reviewed the Kansas Campaign Finance Act (K.S.A. 25-4142 *et seq.*) in its entirety, and nothing in the Act speaks to a candidate becoming personally liable for the debts or obligations of the campaign.

We do note that pursuant to K.S.A. 25-4155 and K.S.A. 25-4157a(c), the campaign must continue to file receipts and expenditures reports as required by K.S.A. 25-4148 until the debts and obligations are fully paid or discharged.

In closing, we want to remind you this opinion is limited to the Kansas Campaign Finance Act and does not address any other body of law.

(continued)

## Advisory Opinion No. 97-32

Written July 8, 1997, to Ron Smith, General Counsel, Kansas Bar Association, Topeka.

This opinion is in response to your letter of May 20, 1997, in which you request an opinion from the Kansas Commission on Governmental Standards and Conduct concerning the Kansas Campaign Finance Act (K.S.A. 25-4142 *et seq.*). We note at the outset that the commission's jurisdiction is limited to the application of K.S.A. 25-4142 *et seq.*, and whether some other statutory system, common law theory or agency rule and regulation applies to your inquiry is not covered by this opinion.

## Factual Statement

We understand you request this opinion in your capacity as general counsel for the Kansas Bar Association. You advise us that Senate Bill 116, which became law on July 1, 1997, limits certain elected officials and candidates from soliciting or accepting campaign contributions from anyone other than an "individual" during the period beginning January 1 and ending with *sine die* adjournment of the legislature.

## Question

Is a partner in a professional firm, or a shareholder in a corporation or limited liability company, an "individual" under the law?

## Opinion

K.S.A. 25-4153a, as amended by Senate Bill 116, states:

No registered lobbyist, political committee or person, other than an individual, shall make a contribution as defined by subsection (d) of K.S.A. 25-4143, and amendments thereto, to any legislator, candidate for membership in the senate or house of representatives, candidate committee for any such legislator or candidate, state officer elected on a statewide basis, candidate for state office elected on a statewide basis or candidate committee for any such officer or candidate after January 1 of each year and prior to adjournment *sine die* of the regular session of the legislature or at any other time in which the legislature is in session. No such legislator, officer, candidate or committee shall accept or solicit any contribution as defined by subsection (d) of K.S.A. 25-4143, and amendments thereto, from any registered lobbyist, political committee or person, other than an individual, during such period.

The commission first notes that the Kansas Campaign Finance Act does not define the term "individual." However, K.S.A. 25-4143(h) defines the term "person" as "any individual, committee, corporation, partnership, trust, organization or association." Based on this definition, it is the commission's opinion that "individual" means a "natural person" as opposed to an "artificial person." Thus, a partner in a professional firm or a shareholder in a corporation or limited liability company would be an "individual."

Diane Gaede  
Chairwoman

Doc. No. 019534

(Published in the Kansas Register August 14, 1997.)

## Summary Notice of Bond Sale

\$159,000

City of Anthony, Kansas

General Obligation Bonds, Series 1997

(General obligation bonds payable from unlimited ad valorem taxes)

## Sealed bids

Subject to the notice of bond sale dated August 14, 1997, sealed bids will be received by the clerk of the City of Anthony, Kansas (the issuer), on behalf of the governing body at City Hall, 124 S. Bluff, Anthony, KS 67003, until noon August 25, 1997, for the purchase of \$159,000 principal amount of General Obligation Bonds, Series 1997. No bid of less than 100 percent of the principal amount of the bonds and accrued interest thereon to the date of delivery will be considered.

## Bond Details

The bonds will consist of fully registered bonds in the denomination of \$5,000 or any integral multiple thereof, except one bond in the denomination of \$9,000. The bonds will be dated September 1, 1997, and will become due on September 1 in the years as follows:

Year	Principal Amount
1998	\$ 9,000
1999	15,000
2000	15,000
2001	15,000
2002	15,000
2003	15,000
2004	15,000
2005	20,000
2006	20,000
2007	20,000

The bonds will bear interest from the date thereof at rates to be determined when the bonds are sold as hereinafter provided, which interest will be payable semiannually on March 1 and September 1 in each year, beginning September 1, 1998.

## Paying Agent and Bond Registrar

Kansas State Treasurer, Topeka, Kansas.

## Good Faith Deposit

Each bid shall be accompanied by a good faith deposit in the form of a cashier's or certified check drawn on a bank located in the United States or a qualified financial surety bond in the amount of \$3,180 (2 percent of the principal amount of the bonds).

## Delivery

The issuer will pay for printing the bonds and will deliver the same properly prepared, executed and registered without cost to the successful bidder on or before September 16, 1997, at such bank or trust company in the contiguous United States as may be specified by the successful bidder.

## Assessed Valuation and Indebtedness

The equalized assessed tangible valuation for computation of bonded debt limitations for the year 1996 is \$8,498,794. The total general obligation indebtedness of



the issuer as of the date of delivery of the bonds, including the bonds being sold but excluding temporary notes to be retired in conjunction therewith, is \$1,749,000.

**Approval of Bonds**

The bonds will be sold subject to the legal opinion of Gilmore & Bell, P.C., Wichita, Kansas, bond counsel, whose approving legal opinion as to the validity of the bonds will be furnished and paid for by the issuer, printed on the bonds and delivered to the successful bidder when the bonds are delivered.

**Additional Information**

Additional information regarding the bonds may be obtained from the clerk, (316) 842-5434, or from the financial advisor, Ranson Municipal Consultants, Wichita, Kansas, Attention: John Haas, (316) 269-2231.

Dated August 4, 1997.

City of Anthony, Kansas

Doc. No. 019518

(Published in the Kansas Register August 14, 1997.)

**Summary Notice of Bond Sale**

**\$370,000**

**City of Independence, Kansas**

**General Obligation Bonds, Series A, 1997**

**(General obligation bonds payable from unlimited ad valorem taxes)**

**Sealed Bids**

Subject to the notice of bond sale dated August 13, 1997, sealed bids will be received by the clerk of the City of Independence, Kansas (the issuer), on behalf of the governing body at 120 N. 6th, Independence, KS 67301, until 5 p.m. August 21, 1997, for the purchase of \$370,000 principal amount of General Obligation Bonds, Series A, 1997. No bid of less than 100 percent of the principal amount of the bonds and accrued interest thereon to the date of delivery will be considered.

**Bond Details**

The bonds will consist of fully registered bonds in the denomination of \$5,000 or any integral multiple thereof. The bonds will be dated September 1, 1997, and will become due on October 1 in the years as follows:

Year	Principal Amount
1998	\$25,000
1999	25,000
2000	25,000
2001	25,000
2002	25,000
2003	25,000
2004	20,000
2005	20,000
2006	20,000
2007	20,000
2008	15,000
2009	15,000
2010	15,000
2011	15,000
2012	15,000
2013	15,000

2014	15,000
2015	15,000
2016	10,000
2017	10,000

The bonds will bear interest from the date thereof at rates to be determined when the bonds are sold as hereinafter provided, which interest will be payable semiannually on April 1 and October 1 in each year, beginning April 1, 1998.

**Optional Book-Entry-Only System**

The successful bidder may elect to have the bonds registered under a book-entry-only system administered through DTC.

**Paying Agent and Bond Registrar**

Kansas State Treasurer, Topeka, Kansas.

**Good Faith Deposit**

Each bid shall be accompanied by a good faith deposit in the form of a cashier's or certified check drawn on a bank located in the United States or a qualified financial surety bond in the amount of \$7,400 (2 percent of the principal amount of the bonds).

**Delivery**

The issuer will pay for printing the bonds and will deliver the same properly prepared, executed and registered without cost to the successful bidder on or before September 15, 1997, at DTC for the account of the successful bidder or at such bank or trust company in the contiguous United States as may be specified by the successful bidder.

**Assessed Valuation and Indebtedness**

The equalized assessed tangible valuation for computation of bonded debt limitations for the year 1996 is \$43,785,328. The total general obligation indebtedness of the issuer as of the date of delivery of the bonds, including the bonds being sold but excluding temporary notes to be retired in conjunction therewith, is \$4,825,000.

**Approval of Bonds**

The bonds will be sold subject to the legal opinion of Gilmore & Bell, P.C., Wichita, Kansas, bond counsel, whose approving legal opinion as to the validity of the bonds will be furnished and paid for by the issuer, printed on the bonds and delivered to the successful bidder when the bonds are delivered.

**Additional Information**

Additional information regarding the bonds may be obtained from the clerk, (316) 332-2500, or from the financial advisor, Stifel, Nicolaus & Company, Inc., 250 N. Water, Suite 100, Wichita, KS 67202, Attention: Larry L. McKown, (316) 264-6321.

Dated August 13, 1997.

City of Independence, Kansas

Doc. No. 019517

(Published in the Kansas Register August 14, 1997.)

**Abbreviated Notice of Bond Sale**  
**City of Kansas City, Kansas**  
**\$1,620,000\***

**Sewer System Improvement Revenue Bonds**  
**Series 1997A**

and

**\$8,705,000\***

**Federally Taxable Sewer System**  
**Refunding Revenue Bonds**  
**Series 1997B**

**Sealed Bids**

Sealed bids will be received by the director of finance/budget director of the City of Kansas City, Kansas, at the Municipal Office Building, One McDowell Plaza, 701 N. 7th, Kansas City, KS 66101, until 10 a.m. Thursday, August 21, 1997, for the purchase of the city's \$1,620,000\* principal amount of Sewer System Improvement Revenue Bonds, Series 1997A, and \$8,705,000\* Federally Taxable Sewer System Refunding Revenue Bonds, Series 1997B (the Series 1997A Bonds and the Series 1997B Bonds, collectively the "bonds"). All bids will be publicly opened and read at said time and place and will be acted upon the same day by the director of finance/budget director pursuant to authorization by the governing body. No oral or auction bids will be considered. Discount bids not to exceed 1 percent on each series of bonds will be accepted.

**Bond Details**

The bonds will be in certificated, book entry or any other form acceptable to both the city and the successful bidder(s) and authorized by state and federal law. The bonds will be issued in the denomination of \$5,000 or any integral multiple thereof and will be dated September 1, 1997. The Series 1997A Bonds will be issued in the principal amount of \$1,620,000\* and will become due serially on May 1 and November 1 in each of the years as follows:

Maturity	Principal Amount
May 1, 1998	\$10,000
November 1, 1998	10,000
May 1, 1999	15,000
November 1, 1999	15,000
May 1, 2000	15,000
November 1, 2000	15,000
May 1, 2001	15,000
November 1, 2001	15,000
May 1, 2002	40,000
November 1, 2002	45,000
May 1, 2003	45,000
November 1, 2003	45,000
May 1, 2004	45,000
November 1, 2004	45,000
May 1, 2005	195,000
November 1, 2005	200,000
May 1, 2006	205,000
November 1, 2006	210,000
May 1, 2007	215,000
November 1, 2007	220,000

The Series 1997B Bonds will be issued in the principal amount of \$8,705,000\* and will become due serially on May 1 and November 1 in each of the years as follows:

Maturity	Principal Amount
May 1, 1998	\$ 905,000

November 1, 1998	1,015,000
May 1, 1999	1,045,000
November 1, 1999	1,080,000
May 1, 2000	1,110,000
November 1, 2000	1,145,000
May 1, 2001	1,185,000
November 1, 2001	1,220,000

The city has established a minimum level of interest savings desired for this refunding. If that minimum is not met through the competitive proposals received on August 21, 1997, the city may reject all proposals.

Each series of bonds will bear interest from September 1 at the rates to be determined when the bonds are sold as herein provided, which interest will be payable semi-annually on May 1 and November 1 in each year, commencing May 1, 1998.

**Delivery and Payment**

The bonds will be delivered to the successful bidder(s) properly prepared, executed and registered without cost to the bidder(s) within approximately 30 days after the date of their sale at such bank or trust company in the continental United States as may be specified by the successful bidder(s) and which is acceptable to the city.

**Good Faith Deposit**

A good faith deposit in the form of a certified or cashier's check or financial surety bond in the amount of \$32,400 for the Series 1997A Bonds and in the amount of \$174,100 for the Series 1997B Bonds must accompany each bid for the applicable series of bonds.

**Costs**

The city will pay the cost of printing the bonds and the expense of all legal services, including the opinion of McDowell, Rice, Smith & Gaar, a Professional Corporation, bond counsel, approving the legality of the bonds, the exclusion of the interest on the Series 1997A Bonds (with specified minor exceptions) from federal gross income taxes and the exclusion of the interest on the bonds from Kansas gross income taxes.

**Bond Insurance**

The city will obtain bond insurance for the Series 1997A Bonds and the Series 1997B Bonds. The city will pay the cost of bond insurance.

**Additional Information**

A complete notice of bond sale, preliminary official statement and bid forms approved by the city will be mailed to all interested parties. Additional information regarding the bonds may be obtained from the director of finance/budget director at (913) 573-5270; from Springsted Public Finance, the city's financial advisor, at (612) 223-3000; or from McDowell, Rice, Smith & Gaar, a Professional Corporation, bond counsel, at (913) 338-5400.

City of Kansas City, Kansas

By: Nancy L. Zielke

Director of Finance/Budget Director

Municipal Office Building

One McDowell Plaza

701 N. 7th

Kansas City, KS 66101

\* Preliminary, subject to change.

Doc. No. 019531

## State of Kansas

**Department of Human Resources  
Division of Workers Compensation**

**Permanent Administrative  
Regulations**

**Article 9.—MEDICAL AND HOSPITAL**

**51-9-7. Fees for medical and hospital services.** Charges for medical, surgical, hospital, dental, and nursing services, medical equipment, medical supplies, prescriptions, medical records, and medical testimony rendered pursuant to the Kansas workers compensation act shall be the lesser of the usual and customary charge of the health care provider, hospital or other entity providing the health care services or the amount allowed by the "Workers Compensation Schedule of Medical Fees" published by the Kansas Department of Human Resources and dated September 1, 1997, including the ground rules incorporated in the schedule, which is hereby adopted by reference. (Authorized by and implementing K.S.A. 1996 Supp. 44-510, as amended by 1997 HB 2011, Sec. 4; effective Jan. 1, 1966; amended Jan. 1, 1969; amended Jan. 1, 1973; amended May 1, 1976; amended May 1, 1978; amended, T-88-20, July 1, 1987; amended May 1, 1988; amended Nov. 1, 1993; amended April 5, 1996; amended Aug. 29, 1997.)

Wayne L. Franklin  
Secretary of Human Resources

Doc. No. 019533

## State of Kansas

**Department of Commerce  
and Housing**

**Permanent Administrative  
Regulations**

**Article 4.—INVESTMENTS IN MAJOR PROJECTS  
AND COMPREHENSIVE TRAINING (IMPACT) ACT**

**110-4-1. Definitions.** As used in these regulations, and for purposes of administering the IMPACT act, the following terms shall have the following meanings:

(a) "Job that formerly existed" means a job of an employer:

(1) with the same or similar description, or performing the same or a similar function as a job being created by that employer; and

(2) was filled or in use within the 18 months prior to the date of filing an application with the secretary for funding from the IMPACT program services fund.

(b) "MPI" means major project investment.

(c) "Maximum funding amount" means the maximum dollar amount for which a qualified project would be eligible under the IMPACT act, assuming sufficient funds exist to fund the maximum dollar amount permitted for all qualified projects as determined by the secretary pursuant to K.A.R. 110-4-2(c).

(d) "Qualified project" means any project described in an application which has been determined by the secretary to be complete, in compliance with the funding lim-

itations set forth in the IMPACT act, and qualified for funding from the IMPACT program services fund.

(e) "Project costs" means the total costs of a qualified project, including program costs.

(f) "Secretary" means the secretary of commerce and housing.

(g) "IMPACT act" means K.S.A. 1996 Supp. 74-50,102 through 74-50,112 and amendments thereto. (Authorized by and implementing K.S.A. 1996 Supp. 74-50,104; effective, 110-3-27-92, March 27, 1992; effective, T-110-7-23-92, July 23, 1992; effective Sept. 8, 1992; amended Aug. 29, 1997.)

**110-4-2. Review standards and priorities for approval of proposed agreements; limits on program costs and on project and program size.** (a) Each proposal for an agreement concerning a SKILL project or a combined SKILL project and financial assistance through an MPI shall be submitted jointly by an employer and an educational institution to the secretary. Each proposal for an agreement concerning only financial assistance through an MPI shall be submitted by an employer to the secretary. Each proposal shall be submitted as an application in the form provided by the secretary or in such other form as is sufficient to provide the information required to be provided under this regulation. Each proposal shall include the following, as applicable:

(1) general information, as follows:

(A) the employer's name;

(B) the employer's address;

(C) the name and title of the employer's designated contact person;

(D) the telephone number of the employer's contact person;

(E) the employer's federal taxpayer identification number, or social security number;

(F) a description of the employer's business operation;

(G) the employer's standard industrial classification designation, as established by the executive office of the president, office of management and budget;

(H) information demonstrating the impact of the proposed project on the local economy; and

(I) a summary of the employer's business plan relating to the project;

(2) for any proposal that includes a SKILL project, information relating to the new jobs and the proposed training program, as follows:

(A) the job title and a description or the classification of each type of new job;

(B) the number of trainees per job title or classification;

(C) the anticipated hiring schedule for each classification;

(D) the number of hours of instruction for each trainee;

(E) a description of the training or instruction to be provided to each trainee;

(F) the location of training;

(G) the anticipated starting and ending dates for training;

(H) the expected longevity of each new job;

(I) the wage scale applicable to each new job;

(J) a description of the benefits package applicable to each new job;

*(continued)*

(K) if the project is for an existing Kansas facility, the current employment level at that facility for each job description and the employment level at that facility for each job description 18 months prior to the date of the application;

(L) the estimated amount of gross wages and withholding tax of all new jobs created under the project over a 10-year period from the date the first new job is filled and the raw data, details of calculations, and the assumptions used in determining such gross wages and withholding tax;

(M) the educational institution's name;

(N) the educational institution's address;

(O) the name and title of the educational institution's designated contact person; and

(P) the telephone number of the educational institution's contact person;

(3) for any proposal that includes a SKILL project, information relating to the project budget and costs, as follows:

(A) salaries of instructors, including the number of hours of instruction and hourly rates;

(B) costs of adult basic education and job-related instruction;

(C) costs of vocational and skill-assessment services and testing;

(D) costs for lease of training equipment, including the costs of installation;

(E) costs to the educational institution for purchase of training equipment, including the costs of installation;

(F) costs of training materials and supplies;

(G) administrative expenses of the educational institution;

(H) costs of subcontracted services with educational institutions, federal, state, or local agencies, vendors or consultants;

(I) costs of contractual or professional services;

(J) training curriculum planning and development costs;

(K) costs of textbooks, manuals, audio-visual, or other training aids;

(L) travel expenses of trainers or trainees;

(M) costs of temporary training facilities;

(N) the amount, if any, of tuition, student fees, or special charges included in the cost of the project;

(O) the raw data, details of calculations, and assumptions used in determining the project budget and costs;

(P) the total estimated costs for the project;

(Q) the amount of project costs proposed to be paid by the employer, by the educational institution, by federal, state, or other public or private grants; and

(R) the amount of project costs requested to be paid from the IMPACT program services fund;

(4) for any proposal that includes a request for financial assistance through an MPI, information relating to the financial assistance requested as follows:

(A) an itemization of the business costs to be defrayed with the financial assistance, and the estimates, raw data and method of determining such business costs;

(B) a draw schedule setting forth each date on which the financial assistance provided through an MPI will be needed and the amounts needed on each date;

(C) background information relating to the undertaking and an explanation of how the financial assistance provided through an MPI will contribute to the relocation of the employer in the state, the location of the employer into the state, or the creation of new jobs within the state; and

(D) if the proposal includes only a request for financial assistance through an MPI, an explanation of the training or education programs to be undertaken or funded by the employer for its employees each year during the term of the agreement, with evidence demonstrating that the employer will meet the minimum training and education requirement set forth in K.S.A. 1996 Supp. 74-50,106(d)(1), and amendments thereto; and

(5) for all proposals, any other information deemed necessary by the secretary.

(b) Each application shall be reviewed by the secretary for completeness and compliance with the funding limitations set forth in the IMPACT act. Additional data may be requested by the secretary to verify the accuracy and completeness of the information set forth in an application. The review of each application shall be completed by the secretary within 30 days of the date a complete application is filed. Any project described in an application determined by the secretary to be complete and in compliance with the funding limitations set forth in the IMPACT act shall be considered to be a "qualified project."

(c) (1) The best method of funding the qualified projects shall be determined by the secretary and the funding requirements of part or all of two or more qualified projects may be pooled to facilitate the issuance of bonds by the Kansas development finance authority. One or more qualified projects may be funded from amounts on deposit or anticipated to be on deposit in the IMPACT program services fund that are not required to be used to pay program costs for other qualified projects.

(2) The maximum funding amount for any qualified project may be funded in more than one increment as may be necessary to accommodate the needs, funding resources, and limitations of the IMPACT program. However, the sum of these increments shall not exceed the maximum funding amount for the qualified project. The determinations by the secretary as to whether a qualified project will be funded in increments and the amount of such increments shall be made on the basis of the considerations listed in K.A.R. 110-4-2(d).

(d) The following factors shall be used to determine whether a qualified project should be funded and the amount of such funding. If two or more qualified projects compete for limited funds, these same factors shall be applied to determine the level of funding for each project:

(1) the per capita cost of training expenses to be funded for the IMPACT program services fund;

(2) the amount of funds used to pay project costs from sources other than funds from the IMPACT program services fund;

(3) the local economic needs and the impact of the project, including current local employment conditions, resultant new economic activity, the project schedule, leveraging of other resources, beneficial impact on the tax

base and project feasibility, as well as the probability that the project will accomplish the projected benefits;

(4) the quality of jobs to be created, with priority given to those full-time jobs that have a higher wage scale, higher benefit levels, a low turnover rate, an opportunity for career development or advancement or other related factors;

(5) the extent to which the project is being coordinated with other projects of that applicant or other applicants to be funded from the IMPACT program services fund. Priority shall be given to projects that are able to share training facilities, instructors, training equipment, and other program services;

(6) the extent to which the project or components of the project do not duplicate existing training resources;

(7) the extent to which the project utilizes funds in the most efficient and effective manner to train employees. Each proposal that includes a SKILL project shall demonstrate that a reasonable effort has been made to investigate alternate training methods and has selected the most efficient and effective method of training;

(8) the extent to which funding from the IMPACT program services fund is essential to the training of the employees, the creation of the new jobs, or both;

(9) the extent to which the employer requesting assistance can continue in business at the levels necessary to retain the new jobs created for the periods indicated in its application if provided with the requested assistance;

(10) the extent to which the employer intends to continue its operations in Kansas for the periods indicated in its application;

(11) if financial assistance through an MPI is requested, the extent to which the project utilizes funds in the most efficient and effective manner to defray business costs for which financial assistance is requested;

(12) the extent to which the business costs to be defrayed with the financial assistance provided through an MPI are directly related to the creation of new jobs in Kansas; and

(13) the extent to which the financial assistance provided through an MPI will confer benefits on the state, the community, local educational institutions or other persons or entities in addition to the benefits it will confer on the employer.

(e) Each qualified project which has been approved for funding by the secretary shall be submitted by the secretary within 30 days of such approval to the governor's council on work force training and investment for review and approval. No final agreement shall be approved by the secretary unless each project under the agreement has been approved by the governor's council on work force training and investment. (Authorized by K.S.A. 1996 Supp. 74-50,104, 74-50,106, and implementing K.S.A. 1996 Supp. 74-50,104, 74-50,105, 74-50,106; effective, T-110-3-27-92, March 27, 1992; effective, T-110-7-23-92, July 23, 1992; effective Sept. 8, 1992; amended Aug. 29, 1997.)

**110-4-3. Limit on maximum funding amount.** The limitation on program costs set forth in K.S.A. 1996 Supp. 74-50,104(b), and amendments thereto, of the IMPACT act shall limit only the maximum funding amount for each qualified project and shall not limit the amount of

project costs which are to be paid from sources other than the IMPACT program services fund. (Authorized by K.S.A. 1996 Supp. 74-50,104, and implementing K.S.A. 1996 Supp. 74-50,104, 74-50,105; effective, T-110-3-27-92, March 27, 1992; effective, T-110-7-23-92, July 23, 1992; effective Sept. 8, 1992; amended Aug. 29, 1997.)

**110-4-4. Enforcement of agreements by the secretary.** Compliance with each agreement shall be enforced by the secretary. In order to facilitate enforcement by the secretary, each agreement shall either:

(a) include the department of commerce and housing as a party to the agreement with enforcement rights; or

(b) name the department of commerce and housing as a third party beneficiary of the agreement with enforcement rights. (Authorized by K.S.A. 1996 Supp. 74-50,104, and implementing K.S.A. 1996 Supp. 74-50,104, 74-50,105; effective, T-110-3-27-92, March 27, 1992; effective, T-110-7-23-92, July 23, 1992; effective Sept. 8, 1992; amended Aug. 29, 1997.)

**110-4-5. Compliance with K.S.A. 1996 Supp. 74-50,106(d), and amendments thereto.** (a) Each employer receiving financial assistance through an MPI shall comply with K.S.A. 1996 Supp. 74-50,106(d), and amendments thereto. For purposes of complying with K.S.A. 1996 Supp. 74-50,106(d)(1), and amendments thereto, the employer shall make an investment in training and education of the employer's employees in each of the employer's fiscal years during the term of the agreement. The investment in each fiscal year shall be in excess of two percent of the employer's total payroll costs for the employer's immediately preceding fiscal year.

(b) Training and education expenditures which qualify for compliance with K.S.A. 1996 Supp. 74-50,106(d)(1), and amendments thereto, shall include those expenditures made for all necessary and incidental costs of providing any of the following:

(1) new jobs training, including training development costs;

(2) adult basic education and job-related instruction;

(3) vocational and skill-assessment services and testing;

(4) training materials and supplies;

(5) subcontracted services with educational institutions, private colleges or universities, or federal, state or local agencies;

(6) contractual or professional services; and

(7) wages paid to persons receiving education or training, but only for the periods during which the person is receiving classroom training. (Authorized by and implementing K.S.A. 1996 Supp. 74-50,104, 74-50,106; effective Aug. 29, 1997.)

Gary Sherrer  
Secretary of Commerce  
and Housing

Doc. No. 019515



## State of Kansas

## State Corporation Commission

Permanent Administrative  
RegulationsArticle 3.—PRODUCTION AND  
CONSERVATION OF OIL AND GAS

**82-3-103a. Deviated holes; horizontal drilling; notice and hearing required.** (a) The owner, operator, or persons responsible for a drilling operation shall submit written notice of the intention to drill for approval by the conservation division before the commencement of drilling operations, for any hole where intended deviation from the surface to the top of the producing formation exceeds 7°.

(b) Any hole drilled horizontally into a formation for production or deviated in the manner stated in subsection (a) may be permitted by the commission only after application to the conservation division and notice pursuant to K.A.R. 82-3-135a. The application may be set for hearing by the commission. (Authorized by K.S.A. 55-152; implementing K.S.A. 55-151; effective May 8, 1989; amended April 23, 1990; amended Aug. 29, 1997.)

**82-3-120. Operator or contractor licenses: application, contents and approval; penalty.** (a) No operator or contractor shall undertake the activities of drilling, completing, servicing, plugging, or operating any well for the purposes of exploring for or recovering oil or gas without first obtaining or renewing a current license. Each operator in physical control of any well, whether or not the well is shut-in, shall maintain a current license.

(b) The application for a license shall be verified and filed with the commission showing the following information:

(1) The name under which the applicant transacts or intends to transact business and the correct mailing address of that business. If the applicant is a partnership or association, the application shall set forth the name and address of each partner or member of the partnership or association. If the applicant is a corporation, the application shall contain the names and addresses of the principal officers;

(2) the number of rigs sought to be licensed;

(3) copies of property tax receipts on all rigs; and

(4) any other information as the forms provided may require.

(c) The application for a license shall be signed and verified by the applicant if the applicant is a natural person, by a partner or a member if the applicant is a partnership or association, or by an executive officer if the applicant is a corporation.

(d) Upon approval of the application by the commission, a license shall be issued to the applicant. Each license shall be in full force and effect for one year unless suspended or revoked by the commission.

(e) Each licensee shall apply to renew the license yearly.

(f) Each operator and contractor shall submit the following with each license or renewal application:

(1) a \$100 license fee;

(2) a \$25 fee for each rig;

(3) \$25 if operation is limited to one gas well used strictly for the purpose of heating a residence; and

(4) financial assurance as provided for in K.A.R. 82-3-120a.

(g) Upon revocation of a license, no new license shall be issued to that operator or contractor until after the expiration of one year from the date of the revocation.

(h) Each licensee shall notify the conservation division in writing of any change in information supplied on the license application.

(i) The failure to obtain or renew an operator or contractor license before operating is punishable by a \$500 penalty. (Authorized by K.S.A. 55-152; implementing K.S.A. 1996 Supp. 55-155, 55-164; effective, T-83-44, Dec. 8, 1982; effective May 1, 1983; amended May 8, 1989; amended April 23, 1990; amended March 20, 1995; amended Aug. 29, 1997.)

**82-3-120a. Operator financial responsibility.** On or after January 1, 1998, an operator license shall be issued only after compliance with the following provisions.

(a) Each operator meeting all of the following shall pay annually a \$50 nonrefundable fee:

(1) Has an acceptable record of compliance, as demonstrated during the preceding 36 months, with commission rules and regulations and with commission orders. An acceptable record of compliance shall mean that the operator has neither been assessed by final order of the commission with \$3,000.00 or more in penalties nor has been cited by final commission order for five or more violations in the preceding 36 months; and

(2) has no outstanding undisputed orders or unpaid fines, penalties, or costs assessed by the commission and has no officer or director that has been or is associated substantially with another operator that has any such outstanding orders or unpaid fines, penalties, or costs.

(b) Each operator that has not been licensed for at least the preceding 36 months and each operator not meeting the requirements of section (a) shall furnish one of the following on an annual basis:

(1) An individual performance bond or letter of credit, on forms prescribed by the commission, in an amount equal to \$.75 times the total aggregate depth of all wells for which the operator is responsible;

(2) a blanket performance bond or letter of credit on forms prescribed by the commission, in an amount equal to the following:

(A) Wells fewer than 2,000 feet in depth: 1-5 wells, \$5,000; 6-25 wells, \$10,000; over 25 wells, \$20,000;

(B) wells 2,000 or more feet in depth: 1-5 wells, \$10,000; 6-25 wells, \$20,000; over 25 wells, \$30,000;

(3) a nonrefundable fee equal to 3% of the amount of the bond or letter of credit required by paragraph b(1) or b(2); or

(4) a first lien in favor of the state of Kansas on tangible personal property associated with the operator's oil and gas production, having a salvage value equal to not less than the amount of the bond or letter of credit required by paragraph b(1) or b(2); or

(5) other financial assurance approved by the commission.

(c) Any operator furnishing financial assurance under paragraph b(1) of this regulation shall also furnish a complete inventory of wells and the depth of each well for which the operator is responsible. Operators furnishing financial assurance under paragraphs b(2), (3), (4), or (5) either shall furnish a well inventory or shall be required to furnish the \$30,000 bond, letter of credit, fee, or other financial assurance based on that amount. Falsification of the well inventory shall be punishable by a penalty of up to \$5,000 and possible suspension of the operator's license. (Authorized by and implementing K.S.A. 1996 Supp. 55-155 and 55-164; effective Aug. 29, 1997.)

**82-3-123. Well bore; commingling of production.**

(a) Applicability. Commingling of production from more than one source of supply shall be permitted if the total production potential is less than the allowable for a single common source of supply for the immediate area and after application and approval by the commission. Commingling shall be prohibited if the commission finds that waste or a violation of correlative rights is likely to result.

(b) Allowable. The maximum well allowable for a well in which commingled production is approved shall be the following:

(1) for oil wells, the allowable for the deepest source of supply demonstrating productivity as provided in K.A.R. 82-3-203 or special order; and

(2) for gas wells, 25% of the combined absolute open flow from all producing zones, with a minimum allowable of 150 mcf/d or as provided by special order.

(c) Notice. Notice of the application shall be provided as required in K.A.R. 82-3-135a(b).

(d) Application. Each original application for commingling and one copy shall be filed with the conservation division. The application shall be submitted to the commission on the form provided by the commission and shall be accompanied by the following information:

(1) A description of the well with a plat attached showing the location of the subject well, the location of other wells on the lease, the location of offset wells within a ½-mile radius of the subject well, and for each of these wells, the name of the lessee of record or the operator;

(2) the names of the upper and lower limits of the sources of supply to be commingled, with proposed perforations or open holes noted;

(3) a wireline log of the subject well;

(4) the production potential of oil, water, gas, or a combination for each source of supply;

(5) the total anticipated production for the formations sought to be commingled; and

(6) the applicant's license number.

(e) Application for additional sources of supply. A new commingling application shall be required if the operator desires to open an additional source of supply that was not included in the initial application. (Authorized by and implementing K.S.A. 1996 Supp. 55-604, K.S.A. 55-605, K.S.A. 55-704; effective, T-83-44, Dec. 8, 1982; effective May 1, 1983; amended May 1, 1985; amended May 1, 1987; amended May 1, 1988; amended May 8, 1989; amended April 23, 1990; amended Aug. 29, 1997.)

**82-3-129.** (Authorized by K.S.A. 1989 Supp. 55-604; implementing K.S.A. 1989 Supp. 55-176, 55-609; effective,

T-83-44, Dec. 8, 1982; effective May 1, 1983; amended April 23, 1990; revoked Aug. 29, 1997.)

**82-3-130. Completion reports; penalty.** (a) Within 120 days of the spud date or commencement of recompletion of a well, the operator shall file an original and two copies of an affidavit of completion with the conservation division, except as provided by subsection (b).

(b) If the time requirement for cementing the additional casing, pursuant to 82-3-106(c)(2)(B), is greater than 120 days, the time for filing the affidavit of completion and two copies shall be extended accordingly.

(c) The affidavit of completion shall be filed regardless of the manner in which the well is completed or recompleted, including a well that is dry and abandoned. The affidavit of completion shall be submitted on forms furnished by the commission. The affidavit shall be accompanied by wireline logs of the well, if run. The failure to file the affidavit of completion within the time required shall be punishable by a \$500 penalty.

(d) Each operator shall attach legible documentation to the affidavit of completion, showing the type, amount, and method of cementing used on all casing strings in the wellbore. The documentation may consist of invoices, job logs, job descriptions, or other similar service company reports. (Authorized by and implementing K.S.A. 1996 Supp. 55-604, K.S.A. 1996 Supp. 55-164; effective, T-83-44, Dec. 8, 1982; effective May 1, 1983; amended May 1, 1986; amended May 8, 1989; amended April 23, 1990; amended Aug. 29, 1997.)

**82-3-136. Transfer of operator responsibility.** (a) If operator responsibility is transferred, the past operator shall report this transfer to the conservation division within 30 days of the change upon a form prescribed by the commission.

(b) The past operator shall furnish a list of all active and inactive wellbores on the lease, unit, gas storage facility, or secondary recovery unit with the notice of transfer.

(c) Transfers shall not be made to any individual, partnership, corporation, or municipality not currently licensed as an operator, gas gatherer, or gas storage operator.

(d) Within 90 days of any transfer, the new operator shall change the tank battery identification sign provided for in K.A.R. 82-3-126 to show the new operator information.

(e) Violations of this regulation shall be punishable by a penalty of up to \$1,000 for the first violation, \$2,000 for a second violation, and \$3,000 plus license review for a third violation. (Authorized by and implementing K.S.A. 1996 Supp. 55-164, K.S.A. 1996 Supp. 55-604, and K.S.A. 55-704; effective May 1, 1985; amended Aug. 29, 1997.)

**82-3-141.** (Authorized by and implementing K.S.A. 1989 Supp. 55-164, 55-604; effective May 1, 1988; amended April 23, 1990; revoked Aug. 29, 1997.)

**82-3-304. Tests of gas wells; penalty.** (a) Initial certified tests run in conformance with K.A.R. 82-3-303 or special orders shall be filed with the commission within 60 days of the first gas sales. Tests shall be conducted

(continued)



under the supervision of the conservation division whether a representative is present or not. In prorated fields, all gas produced into a pipeline shall be counted against the allowable.

(b) Tests may be witnessed by a representative of any producer, purchaser, or transporter in the field. Any producer, purchaser, or transporter may request notification of the time the tests will commence from the operator of the well on which a test is to be run.

(c) An annual test shall be run on all gas wells not covered by a proration order or special order, in accordance with these rules except for the following:

- (1) gas wells used for domestic purposes where gas is not sold;
- (2) gas wells that produce less than 150 mcf of gas per day;
- (3) coalbed methane gas wells;
- (4) water-prone gas wells equipped with a plunger lift;
- (5) gas wells used exclusively for secondary oil recovery; and
- (6) gas wells employing a vacuum to recover gas.

The test shall be effective during the next succeeding year. Tests may be required by the commission at any time. The test shall become effective the first day of the month following receipt of test results by the conservation division.

(d) The following gas wells shall not qualify for an exemption from annual testing:

- (1) gas wells that produce gas with more than 30 grains per 100 cubic feet of H<sub>2</sub>S; and
- (2) gas wells on which the operator has failed to submit an open flow test.

(e) Each operator shall request the exemption from annual testing each year on forms prescribed by the commission, shall perform a shut-in pressure test during each year, and shall furnish it to the commission with the request for exemption.

(f) Each operator of a gas well shall be responsible for conducting all tests required to obtain an allowable for the well. Each operator shall submit one copy of the test required under subsection (c) to the conservation division and one copy to the purchaser to confirm the allowable as determined by these rules or by special orders.

(g) Any gas produced and sold without the required test shall be considered illegal production.

(h) The failure to submit an annual gas well test shall be punishable by a \$500.00 penalty. (Authorized by K.S.A. 55-704; implementing K.S.A. 1996 Supp. 55-164 and K.S.A. 55-703; effective, T-83-44, Dec. 8, 1982; effective May 1, 1983; amended May 1, 1986; amended May 1, 1987; amended May 1, 1988; amended April 23, 1990; amended Aug. 29, 1997.)

**82-3-308.** (Authorized by and implementing K.S.A. 1982 Supp. 55-703; effective, T-83-44, Dec. 8, 1982; effective May 1, 1983; revoked Aug. 29, 1997.)

**82-3-309.** (Authorized by and implementing K.S.A. 1982 Supp. 55-703; effective, T-83-44, Dec. 8, 1982; effective May 1, 1983; revoked Aug. 29, 1997.)

**82-3-312. Gas allowables and drilling unit.** In the absence of basic proration orders issued by the commission, the following provisions shall apply to all gas wells.

(a) Standard daily allowable. The standard daily allowable for a gas well is limited to 25 percent of the well's actual open flow potential. All tested gas wells shall be entitled to a minimum allowable of 150 mcf per day. The actual open flow potential of each well shall be measured pursuant to K.A.R. 82-3-303.

(b) Standard drilling unit. A standard drilling unit shall be 10 acres. Except as otherwise provided by K.A.R. 82-3-108(c), the well for that unit shall be located at least 330 feet from any lease or unit boundary.

(c) Acreage-attribution unit. Unless a well location exception is granted, any gas well located nearer than 330 feet to any lease or unit boundary line shall have acreage attributed to it by the establishment of an acreage-attribution unit. The width of each unit shall be defined as being twice the distance from the well to the nearest lease or unit boundary line. The length of the unit shall be defined to be the same as the width.

(d) Acreage attributable. When any gas well is located nearer than 330 feet to any lease or unit boundary line, the standard daily allowable or minimum allowable shall be reduced in the same proportion that the acreage attribution to the well bears to 10 acres.

(e) Exceptions may be granted, and adjustments to the allowables may be made by the commission to protect correlative rights, prevent waste, and give the full allowable where any of these conditions exists:

(1) Location exceptions have been granted for man-made structures or topographic features.

(2) No interference with drainage of adjacent wells can be shown by competent evidence.

(3) Actual interference is less than the reduced allowable. (Authorized by K.S.A. 55-704; implementing K.S.A. 55-703; effective May 1, 1985; amended May 1, 1986; amended May 1, 1988; amended April 23, 1990; amended Aug. 29, 1997.)

**82-3-313.** (Authorized by K.S.A. 55-604, 55-704; implementing K.S.A. 55-602, 55-603, 55-703, as amended by L. 1985, Ch. 183, Sec. 1; effective May 1, 1986; revoked Aug. 29, 1997.)

**82-3-500.** (Authorized by and implementing K.S.A. 66-1,185; effective, T-83-44, Dec. 8, 1982; effective May 1, 1983; revoked Aug. 29, 1997.)

**82-3-501.** (Authorized by and implementing K.S.A. 66-1,185; effective, T-83-44, Dec. 8, 1982; effective May 1, 1983; revoked Aug. 29, 1997.)

**82-3-502.** (Authorized by K.S.A. 66-1,185; implementing K.S.A. 1986 Supp. 55-706, K.S.A. 66-1,185; effective, T-83-44, Dec. 8, 1982; effective May 1, 1983; amended, T-85-51, Dec. 19, 1984; amended May 1, 1988; revoked Aug. 29, 1997.)

**82-3-503.** (Authorized by and implementing K.S.A. 66-1,185; effective, T-83-44, Dec. 8, 1982; effective May 1, 1983; revoked Aug. 29, 1997.)

**82-3-504.** (Authorized by and implementing K.S.A. 66-1,185; effective, T-83-44, Dec. 8, 1982; effective May 1, 1983; revoked Aug. 29, 1997.)

Judith McConnell  
Executive Director

Doc. No. 019512

**INDEX TO ADMINISTRATIVE REGULATIONS**

This index lists in numerical order the new, amended and revoked administrative regulations and the volume and page number of the *Kansas Register* issue in which more information can be found. This cumulative index supplements the index found in the 1996 Supplement to the *Kansas Administrative Regulations*.

**AGENCY 1: DEPARTMENT OF ADMINISTRATION**

Reg. No.	Action	Register
1-1-1	Amended	V. 15, p. 703
1-1-2	Revoked	V. 15, p. 704
1-1-3	Revoked	V. 15, p. 704
1-1-4	Revoked	V. 15, p. 704
1-2-8	Amended	V. 16, p. 1178
1-2-14	Amended	V. 16, p. 1178
1-2-35	Amended	V. 16, p. 1178
1-2-53	Revoked	V. 15, p. 704
1-2-57	Amended	V. 15, p. 704
1-2-68	Revoked	V. 16, p. 1178
1-2-72	Amended	V. 15, p. 704
1-2-88	Amended	V. 15, p. 704
1-3-1	Revoked	V. 15, p. 704
1-3-3	Revoked	V. 15, p. 704
1-3-4	Revoked	V. 15, p. 704
1-4-2	Amended	V. 15, p. 704
1-4-6	Revoked	V. 15, p. 704
1-5-1	Amended	V. 15, p. 704
1-5-2	Revoked	V. 15, p. 704
1-5-3	Revoked	V. 15, p. 704
1-5-6	Revoked	V. 15, p. 704
1-5-7	Amended	V. 15, p. 704
1-5-12	Amended	V. 15, p. 705
1-5-15	Amended	V. 15, p. 705
1-5-22	Amended	V. 15, p. 706
1-5-24	Amended	V. 15, p. 706
1-5-26	Amended	V. 15, p. 707
1-6-2	Amended	V. 16, p. 1178
1-6-8	Amended	V. 16, p. 1179
1-6-21	Amended	V. 16, p. 1179
1-6-22	Revoked	V. 16, p. 1179
1-6-22a	Amended	V. 15, p. 707
1-6-23	Amended	V. 15, p. 708
1-6-24	Amended	V. 15, p. 708
1-6-27	Amended	V. 16, p. 1179
1-6-31	Amended	V. 15, p. 708
1-6-33	Amended	V. 16, p. 973
1-8-1	Revoked	V. 15, p. 709
1-8-5	Amended	V. 15, p. 709
1-8-7	Revoked	V. 15, p. 709
1-9-2	Amended	V. 16, p. 973
1-9-7c	Amended	V. 16, p. 974
1-9-9	Revoked	V. 15, p. 709
1-9-13	Amended	V. 16, p. 974
1-9-15	Revoked	V. 15, p. 709
1-9-16	Revoked	V. 15, p. 709
1-9-17	Revoked	V. 16, p. 975
1-9-19a	Amended	V. 15, p. 709
1-9-23	Amended	V. 15, p. 710
1-9-26	Amended	V. 16, p. 975
1-9-27	Amended	V. 16, p. 976
1-10-6	Amended	V. 15, p. 713
1-10-8	Revoked	V. 15, p. 713
1-10-9	Revoked	V. 15, p. 713
1-11-1	Amended	V. 15, p. 713
1-13-1a	Amended	V. 16, p. 977
1-13-2	Revoked	V. 15, p. 714
1-13-3	Revoked	V. 15, p. 714
1-13-4	Revoked	V. 15, p. 714
1-14-6	Revoked	V. 15, p. 714
1-14-7	Amended	V. 15, p. 714
1-14-10	Amended	V. 15, p. 715
1-14-11	Amended	V. 15, p. 715

1-14-12a	New	V. 16, p. 170
1-16-2a	Amended	V. 16, p. 1210
1-16-2b	Amended	V. 16, p. 1210
1-16-2d	Revoked	V. 16, p. 1211
1-16-2e	Amended	V. 16, p. 1211
1-16-18	Amended	V. 16, p. 1211
1-16-18a	Amended	V. 15, p. 317
1-17-10	Amended	V. 15, p. 1706
1-18-1a	Amended	V. 16, p. 1212
1-45-4	Amended	V. 15, p. 1706
1-45-7	Amended	V. 15, p. 1706
1-45-8	Amended	V. 15, p. 1706
1-63-2	Amended	V. 16, p. 978

**AGENCY 5: DEPARTMENT OF AGRICULTURE—DIVISION OF WATER RESOURCES**

Reg. No.	Action	Register
5-25-1 through 5-25-10	Amended	V. 15, p. 410-412
5-50-1	Amended	V. 15, p. 1861
5-50-2	Amended	V. 15, p. 1861
5-50-3	Revoked	V. 15, p. 1862
5-50-4	Amended	V. 15, p. 1862
5-50-5	Amended	V. 15, p. 1862
5-50-6	Amended	V. 15, p. 1863
5-50-7	New	V. 15, p. 1863
5-50-8	New	V. 15, p. 1863

**AGENCY 7: SECRETARY OF STATE**

Reg. No.	Action	Register
7-18-1	New	V. 15, p. 1508
7-18-2	New	V. 15, p. 1508
7-18-3	New	V. 15, p. 1508
7-19-1	Amended	V. 16, p. 821
7-19-2	Amended	V. 16, p. 821
7-19-3	Amended	V. 16, p. 822
7-19-4	Amended	V. 16, p. 822
7-19-7	New	V. 16, p. 822
7-23-2	Amended	V. 15, p. 1927
7-23-4	Amended	V. 15, p. 1927
7-23-8	Revoked	V. 15, p. 1927
7-38-1	New	V. 15, p. 1927
7-38-2	New	V. 15, p. 1927

**AGENCY 9: ANIMAL HEALTH DEPARTMENT**

Reg. No.	Action	Register
9-10-31	New	V. 15, p. 1671
9-10-32	New	V. 15, p. 1671
9-18-1	Amended	V. 15, p. 1671
9-19-1 through 9-19-11	Amended	V. 15, p. 1671-1677
9-25-1 through 9-25-15	New	V. 15, p. 1677-1684
9-26-1	New	V. 15, p. 1684

**AGENCY 10: KANSAS BUREAU OF INVESTIGATION**

Reg. No.	Action	Register
10-20-2	Amended	V. 16, p. 1049
10-20-3	Revoked	V. 16, p. 1049
10-20-4	Amended	V. 16, p. 1049

**AGENCY 11: STATE CONSERVATION COMMISSION**

Reg. No.	Action	Register
11-8-8	Amended	V. 15, p. 1401

**AGENCY 16: ATTORNEY GENERAL**

Reg. No.	Action	Register
16-2-1	Amended	V. 15, p. 375
16-5-1	Amended	V. 15, p. 375
16-5-4	Amended	V. 15, p. 375
16-5-5	Amended	V. 15, p. 376
16-6-1	Amended	V. 15, p. 376
16-9-1	New	V. 16, p. 1078

**AGENCY 17: STATE BANKING DEPARTMENT**

Reg. No.	Action	Register
17-1-1	New	V. 15, p. 1130
17-9-1 through 17-9-10	New	V. 15, p. 1130, 1131

17-10-1	Revoked	V. 15, p. 1131
17-11-1 through 17-11-12	Revoked	V. 15, p. 1131
17-11-13	Amended	V. 15, p. 1131
17-11-14	Amended	V. 15, p. 1380
17-11-15 through 17-11-19	Amended	V. 15, p. 1131, 1132
17-11-20	Revoked	V. 15, p. 1132
17-11-21	Amended	V. 15, p. 1132
17-11-23	New	V. 15, p. 1132
17-12-1	Amended	V. 15, p. 1132
17-12-2	Amended	V. 15, p. 1132
17-16-1	Amended	V. 15, p. 1132
17-16-2	Amended	V. 15, p. 1132
17-16-3	Revoked	V. 15, p. 1133
17-16-4	Amended	V. 15, p. 1133
17-16-5 through 17-16-8	Revoked	V. 15, p. 1133
17-16-9	Amended	V. 15, p. 1133
17-17-1 through 17-17-10	Amended	V. 15, p. 1133, 1134
17-18-1 through 17-18-4	Revoked	V. 15, p. 1134
17-21-1 through 17-21-6	Amended	V. 15, p. 1134, 1135
17-21-7	Revoked	V. 15, p. 1135
17-21-8	Amended	V. 15, p. 1135

**AGENCY 24: KANSAS WHEAT COMMISSION**

Reg. No.	Action	Register
24-1-1	Amended	V. 15, p. 703

**AGENCY 25: STATE GRAIN INSPECTION DEPARTMENT**

Reg. No.	Action	Register
25-1-1	Revoked	V. 15, p. 138
25-3-3	Amended	V. 15, p. 138
25-4-1	Revoked	V. 15, p. 1380
25-4-4	Amended	V. 15, p. 1538

**AGENCY 26: DEPARTMENT ON AGING**

Reg. No.	Action	Register
26-4a-1	New	V. 16, p. 1173
26-5-6	Amended	V. 15, p. 1625
26-5-9	New	V. 15, p. 1626
26-5-10	New	V. 15, p. 1626
26-6-1 through 26-6-8	Revoked	V. 15, p. 1626
26-10-1	New	V. 16, p. 1173

**AGENCY 28: DEPARTMENT OF HEALTH AND ENVIRONMENT**

Reg. No.	Action	Register
28-1-9	Revoked	V. 15, p. 550
28-1-10	Revoked	V. 15, p. 550
28-1-13	Amended	V. 15, p. 970
28-1-14	Amended	V. 15, p. 970
28-1-15	Amended	V. 15, p. 971
28-1-19	Revoked	V. 15, p. 550
28-1-21	Revoked	V. 15, p. 550
28-1-22	Revoked	V. 15, p. 550
28-3-5	Revoked	V. 15, p. 550
28-3-6	Revoked	V. 15, p. 550
28-4-72	Revoked	V. 15, p. 551
28-4-431	Revoked	V. 15, p. 551
28-4-506	Revoked	V. 15, p. 551
28-4-507	Revoked	V. 15, p. 551
28-4-508	Revoked	V. 15, p. 551
28-4-550	Amended	V. 16, p. 1247
28-4-551	Revoked	V. 16, p. 1248
28-4-552	Amended	V. 16, p. 1248
28-4-553	Revoked	V. 16, p. 1248
28-4-554	Revoked	V. 16, p. 1248
28-4-555	Revoked	V. 16, p. 1248
28-4-556	Amended	V. 16, p. 1248

(continued)

28-4-557 through			28-21-99a	Revoked	V. 15, p. 552	28-49-1 through			
28-4-563	Revoked	V. 16, p. 1249	28-21-102 through			28-49-8	Revoked	V. 15, p. 553	
28-4-565	Amended	V. 16, p. 1249	28-21-112	Revoked	V. 15, p. 552	28-68-1 through			
28-4-566	Revoked	V. 16, p. 1249	28-23-5	Revoked	V. 15, p. 552	28-68-9	New	V. 15, p. 1931-1934	
28-4-567	Revoked	V. 16, p. 1249	28-23-8	Revoked	V. 15, p. 552	<b>AGENCY 30: SOCIAL AND REHABILITATION SERVICES</b>			
28-4-569	Amended	V. 16, p. 1249	28-23-14	Revoked	V. 15, p. 552	<b>Reg. No.</b>	<b>Action</b>	<b>Register</b>	
28-4-570	Revoked	V. 16, p. 1250	28-23-15	Revoked	V. 15, p. 552	30-2-17	New	V. 16, p. 1174	
28-4-571	Revoked	V. 16, p. 1250	28-23-25	Revoked	V. 15, p. 552	30-4-34	Amended	V. 16, p. 251	
28-4-572	Revoked	V. 16, p. 1250	28-23-33	Revoked	V. 15, p. 552	30-4-35	Amended	V. 16, p. 1001	
28-5-8	Revoked	V. 15, p. 551	28-23-60 through			30-4-35w	Revoked	V. 16, p. 251	
28-6-1	Revoked	V. 15, p. 551	28-23-66	Revoked	V. 15, p. 552	30-4-40	Amended	V. 16, p. 251	
28-6-2	Revoked	V. 15, p. 551	28-23-69	Revoked	V. 15, p. 552	30-4-41	Amended	V. 16, p. 251	
28-7-1 through			28-23-72	Revoked	V. 15, p. 553	30-4-41w	Revoked	V. 16, p. 252	
28-7-9	Revoked	V. 15, p. 551	28-23-74	Revoked	V. 15, p. 553	30-4-50	Amended	V. 16, p. 252	
28-8-1	Revoked	V. 15, p. 551	28-23-76	Revoked	V. 15, p. 553	30-4-50w	Revoked	V. 16, p. 252	
28-10-36	Revoked	V. 15, p. 551	28-23-77	Revoked	V. 15, p. 553	30-4-52	Amended	V. 16, p. 252	
28-10-40	Revoked	V. 15, p. 551	28-26-80 through			30-4-52w	Revoked	V. 16, p. 252	
28-10-41	Revoked	V. 15, p. 551	28-26-87	Revoked	V. 15, p. 553	30-4-53	Revoked	V. 16, p. 252	
28-11-1 through			28-26-90a	Revoked	V. 15, p. 553	30-4-53w	Revoked	V. 16, p. 252	
28-11-6	Revoked	V. 15, p. 551	28-28-1	Revoked	V. 15, p. 553	30-4-54	Amended	V. 16, p. 688	
28-13-10	Revoked	V. 15, p. 551	28-28-2	Revoked	V. 15, p. 553	30-4-54w	Revoked	V. 16, p. 252	
28-13-11	Revoked	V. 15, p. 551	28-29-1	Revoked	V. 15, p. 553	30-4-55	Amended	V. 16, p. 252	
28-16-50 through			28-29-83	Revoked	V. 15, p. 553	30-4-55w	Revoked	V. 16, p. 253	
28-16-54	Revoked	V. 15, p. 551	28-29-98	Amended	V. 15, p. 1804	30-4-58	Revoked	V. 16, p. 253	
28-16-56a	Revoked	V. 15, p. 1402	28-29-100	Amended	V. 15, p. 1804	30-4-58w	Revoked	V. 16, p. 253	
28-16-56b	Revoked	V. 15, p. 1402	28-29-103	Amended	V. 15, p. 1804	30-4-59	Amended	V. 16, p. 253	
28-16-56c	New	V. 15, p. 1402	28-31-4	Amended	V. 15, p. 297	30-4-59w	Revoked	V. 16, p. 253	
28-16-56d	New	V. 15, p. 1403	28-31-10	Amended	V. 15, p. 301	30-4-60w	Revoked	V. 16, p. 253	
28-16-59	Amended	V. 15, p. 1403	28-31-10a	Amended	V. 16, p. 1048	30-4-61	Amended	V. 16, p. 253	
28-16-65	Revoked	V. 15, p. 551	28-33-1	Revoked	V. 15, p. 495	30-4-61w	Revoked	V. 16, p. 253	
28-16-67	Revoked	V. 15, p. 551	28-33-11	Revoked	V. 15, p. 495	30-4-63	Revoked	V. 16, p. 253	
28-17-5	Revoked	V. 15, p. 551	28-33-12	Amended	V. 15, p. 495	30-4-63w	Revoked	V. 16, p. 254	
28-17-8	Revoked	V. 15, p. 551	28-34-11	Amended	V. 15, p. 497	30-4-64	Amended	V. 16, p. 254	
28-19-45	Revoked	V. 15, p. 183	28-35-178b	Amended	V. 15, p. 1592	30-4-64w	Revoked	V. 16, p. 255	
28-19-46	Revoked	V. 15, p. 183	28-35-180a	Amended	V. 15, p. 1593	30-4-65w	Revoked	V. 16, p. 255	
28-19-47	Revoked	V. 15, p. 183	28-35-184b	New	V. 15, p. 1596	30-4-70	Amended	V. 16, p. 255	
28-19-79	New	V. 16, p. 584	28-35-193b	New	V. 15, p. 1596	30-4-70w	Revoked	V. 16, p. 256	
28-19-83 through			28-35-201	New	V. 15, p. 1598	30-4-71	Revoked	V. 16, p. 256	
28-19-96	Revoked	V. 15, p. 551	28-35-202	New	V. 15, p. 1599	30-4-71w	Revoked	V. 16, p. 256	
28-19-98	Revoked	V. 15, p. 551	28-35-290	New	V. 15, p. 1601	30-4-72	Revoked	V. 16, p. 256	
28-19-98a	Revoked	V. 15, p. 551	28-35-291	New	V. 15, p. 1601	30-4-72w	Revoked	V. 16, p. 256	
28-19-99 through			28-35-362	Amended	V. 15, p. 1602	30-4-73	Revoked	V. 16, p. 256	
28-19-108	Revoked	V. 15, p. 552	28-37-10 through			30-4-74	Revoked	V. 16, p. 256	
28-19-108a	Revoked	V. 15, p. 552	28-37-14	Revoked	V. 15, p. 553	30-4-74w	Revoked	V. 16, p. 256	
28-19-109	Revoked	V. 15, p. 552	28-39-144	Amended	V. 16, p. 177	30-4-78	Revoked	V. 16, p. 256	
28-19-119 to			28-39-145	Amended	V. 16, p. 179	30-4-80	Amended	V. 16, p. 256	
28-19-121a	Revoked	V. 15, p. 552	28-39-146	Amended	V. 16, p. 181	30-4-85a	Revoked	V. 16, p. 256	
28-19-123	Revoked	V. 15, p. 552	28-39-147	Amended	V. 16, p. 181	30-4-90	Amended	V. 16, p. 257	
28-19-124	Revoked	V. 15, p. 552	28-39-148	Amended	V. 16, p. 182	30-4-90w	Revoked	V. 16, p. 259	
28-19-125	Revoked	V. 15, p. 552	28-39-149	Amended	V. 16, p. 183	30-4-95	Amended	V. 16, p. 259	
28-19-127 through			28-39-150	Amended	V. 16, p. 184	30-4-96	Amended	V. 16, p. 259	
28-19-131	Revoked	V. 15, p. 552	28-39-151	Amended	V. 16, p. 184	30-4-100	Amended	V. 16, p. 260	
28-19-133 through			28-39-152	Amended	V. 16, p. 185	30-4-100w	Revoked	V. 16, p. 260	
28-19-141	Revoked	V. 15, p. 552	28-39-153	Amended	V. 16, p. 187	30-4-101	Amended	V. 16, p. 260	
28-19-149 through			28-39-154	Amended	V. 16, p. 187	30-4-102	Amended	V. 16, p. 261	
28-19-162	Revoked	V. 15, p. 552	28-39-155	Amended	V. 16, p. 188	30-4-105	Revoked	V. 16, p. 261	
28-19-202	Amended	V. 16, p. 176	28-39-156	Amended	V. 16, p. 188	30-4-105w	Revoked	V. 16, p. 261	
28-19-645	New	V. 15, p. 183	28-39-157	Amended	V. 16, p. 189	30-4-106	Amended	V. 16, p. 261	
28-19-646	New	V. 15, p. 183	28-39-158	Amended	V. 16, p. 190	30-4-106w	Revoked	V. 16, p. 262	
28-19-647	New	V. 15, p. 183	28-39-159	Amended	V. 16, p. 192	30-4-108	Amended	V. 16, p. 262	
28-19-648	New	V. 15, p. 184	28-39-160	Amended	V. 16, p. 192	30-4-109	Amended	V. 16, p. 262	
28-19-720	Amended	V. 16, p. 823	28-39-161	Amended	V. 16, p. 192	30-4-109w	Revoked	V. 16, p. 263	
28-19-735	Amended	V. 16, p. 823	28-39-162	Amended	V. 16, p. 193	30-4-110	Amended	V. 16, p. 1001	
28-19-750	Amended	V. 16, p. 823	28-39-162a	Amended	V. 16, p. 193	30-4-110w	Revoked	V. 16, p. 264	
28-19-800	New	V. 15, p. 257	28-39-162b	Amended	V. 16, p. 194	30-4-111	Amended	V. 16, p. 1002	
28-19-801	New	V. 15, p. 258	28-39-162c	Amended	V. 16, p. 199	30-4-111w	Revoked	V. 16, p. 265	
28-21-3	Revoked	V. 15, p. 552	28-39-162c	Amended	V. 16, p. 200	30-4-112w	Revoked	V. 16, p. 265	
28-21-90a	Revoked	V. 15, p. 552	28-39-163	Amended	V. 16, p. 204	30-4-113	Amended	V. 16, p. 1002	
28-21-91a	Revoked	V. 15, p. 552	28-39-240 through			30-4-113w	Revoked	V. 16, p. 266	
28-21-91b	Revoked	V. 15, p. 552	28-39-256	New	V. 16, p. 206-213	30-4-120	Amended	V. 16, p. 266	
28-21-92a	Revoked	V. 15, p. 552	28-41-1 through			30-4-120w	Revoked	V. 16, p. 266	
28-21-93a	Revoked	V. 15, p. 552	28-41-9	Revoked	V. 15, p. 553	30-4-121	Revoked	V. 15, p. 915	
28-21-94a	Revoked	V. 15, p. 552	28-41-9	Revoked	V. 15, p. 553	30-4-122a	Revoked	V. 16, p. 266	
28-21-96a	Revoked	V. 15, p. 552	28-42-1	Revoked	V. 15, p. 553	30-4-130	Amended	V. 16, p. 266	
28-21-98a	Revoked	V. 15, p. 552	28-42-3 through			30-4-130w	Revoked	V. 16, p. 268	
			28-42-7	Revoked	V. 15, p. 553	30-4-140	Amended	V. 16, p. 268	
			28-42-9 through			30-4-140w	Revoked	V. 16, p. 268	
			28-42-16	Revoked	V. 15, p. 553	30-5-58	Amended	V. 16, p. 1003	
						30-5-64	Amended	V. 16, p. 1008	
						30-5-70	Amended	V. 15, p. 1017	
						30-5-80	Revoked	V. 16, p. 1010	

30-5-81	Amended	V. 15, p. 925
30-5-88	Amended	V. 15, p. 925
30-5-101	Amended	V. 16, p. 1010
30-5-109	Amended	V. 16, p. 1010
30-5-118a	Amended	V. 16, p. 1010
30-5-300		
through		
30-5-308	New	V. 15, p. 1877-1880
30-5-300	Amended	V. 16, p. 1013
30-5-307	Amended	V. 16, p. 1016
30-5-309	New	V. 16, p. 1016
30-6-34	Amended	V. 16, p. 268
30-6-35	Amended	V. 16, p. 1017
30-6-35w	Revoked	V. 16, p. 268
30-6-41	Amended	V. 16, p. 268
30-6-41w	Revoked	V. 16, p. 269
30-6-50w	Revoked	V. 16, p. 269
30-6-52	Amended	V. 16, p. 269
30-6-52w	Revoked	V. 16, p. 269
30-6-53	Amended	V. 15, p. 1880
30-6-53w	Revoked	V. 16, p. 269
30-6-54	Amended	V. 16, p. 688
30-6-54w	Revoked	V. 16, p. 270
30-6-55	Amended	V. 16, p. 270
30-6-55w	Revoked	V. 16, p. 270
30-6-56w	Revoked	V. 16, p. 270
30-5-59	Amended	V. 16, p. 270
30-6-59w	Revoked	V. 16, p. 270
30-6-60w	Revoked	V. 16, p. 270
30-6-65	Amended	V. 16, p. 270
30-6-65w	Revoked	V. 16, p. 271
30-6-70	Amended	V. 16, p. 271
30-6-70w	Revoked	V. 16, p. 271
30-6-72	Revoked	V. 16, p. 271
30-6-72w	Revoked	V. 16, p. 271
30-6-73	Revoked	V. 16, p. 271
30-6-77w	Revoked	V. 16, p. 272
30-6-78w	Revoked	V. 16, p. 272
30-6-79	Revoked	V. 16, p. 272
30-6-81w	Revoked	V. 16, p. 272
30-6-82w	Revoked	V. 16, p. 272
30-6-85w	Revoked	V. 16, p. 272
30-6-86w	Revoked	V. 16, p. 272
30-6-87w	Revoked	V. 16, p. 272
30-6-94w	Revoked	V. 16, p. 272
30-6-103	Amended	V. 15, p. 1882
30-6-103w	Revoked	V. 16, p. 272
30-6-105	Revoked	V. 16, p. 272
30-6-105w	Revoked	V. 16, p. 272
30-6-106	Amended	V. 16, p. 272
30-6-106w	Revoked	V. 16, p. 274
30-6-107w	Revoked	V. 16, p. 274
30-6-108	Amended	V. 16, p. 274
30-6-109	Amended	V. 16, p. 275
30-6-109w	Revoked	V. 16, p. 276
30-6-110	Amended	V. 16, p. 276
30-6-110w	Revoked	V. 16, p. 277
30-6-111	Amended	V. 16, p. 277
30-6-111w	Revoked	V. 16, p. 278
30-6-112w	Revoked	V. 16, p. 278
30-6-113	Amended	V. 16, p. 1017
30-6-113w	Revoked	V. 16, p. 279
30-6-140	Amended	V. 16, p. 279
30-6-150w	Revoked	V. 16, p. 280
30-7-65	Amended	V. 16, p. 280
30-7-100	Amended	V. 16, p. 280
30-7-102	Amended	V. 15, p. 927
30-7-103	Amended	V. 15, p. 929
30-7-104	Amended	V. 15, p. 929
30-10-1a	Amended	V. 15, p. 1887
30-10-2	Amended	V. 15, p. 1890
30-10-7	Amended	V. 15, p. 1890
30-10-15a	Amended	V. 15, p. 1891
30-10-17	Amended	V. 15, p. 1892
30-10-19	Amended	V. 15, p. 1894
30-10-21	Amended	V. 15, p. 929
30-10-25	Amended	V. 15, p. 1894
30-10-217	Amended	V. 15, p. 930
30-10-218	Amended	V. 15, p. 550
30-41-1		
through		
30-41-5	Revoked	V. 15, p. 930
30-41-6a	Revoked	V. 15, p. 930
30-41-6b	Revoked	V. 15, p. 1895

30-41-6c		
through		
30-41-6h	Revoked	V. 15, p. 930, 931
30-41-7a		
through		
30-41-7i	Revoked	V. 15, p. 931
30-41-8	Revoked	V. 15, p. 931
30-41-10		
through		
30-41-20	Revoked	V. 15, p. 931
30-46-10	Amended	V. 15, p. 1895
30-46-13	Amended	V. 15, p. 1896
30-46-15	Amended	V. 15, p. 1896
30-46-16	Amended	V. 15, p. 1896
30-46-17	Amended	V. 15, p. 1896
30-63-1	New	V. 15, p. 931
30-63-10		
through		
30-63-14	New	V. 15, p. 931-933
30-63-20	New	V. 15, p. 933
30-63-21	New	V. 15, p. 933
30-63-22	New	V. 15, p. 934
30-63-23	New	V. 15, p. 1215
30-63-24		
through		
30-63-31	New	V. 15, p. 934-937
30-64-1	New	V. 15, p. 937
30-64-10		
through		
30-64-13	New	V. 15, p. 937
30-64-20		
through		
30-64-34	New	V. 15, p. 938-942

AGENCY 36: DEPARTMENT OF TRANSPORTATION

Reg. No.	Action	Register
36-1-1	Revoked	V. 16, p. 1250
36-1-1a	Revoked	V. 16, p. 1251
36-1-2	Revoked	V. 16, p. 1251
36-1-3	Revoked	V. 16, p. 1251
36-1-8	Revoked	V. 16, p. 1251
36-1-9	Revoked	V. 16, p. 1251
36-1-10	Revoked	V. 16, p. 1251
36-1-26	Revoked	V. 16, p. 1251
36-1-27	Revoked	V. 16, p. 1251
36-1-35		
through		
36-1-38	New	V. 16, p. 1251-1255
36-35-1	Revoked	V. 16, p. 1256
36-39-1	Amended	V. 16, p. 1078
36-39-2	Amended	V. 16, p. 1078
36-39-3	Amended	V. 16, p. 1078
36-39-6	Amended	V. 16, p. 1080

AGENCY 40: KANSAS INSURANCE DEPARTMENT

Reg. No.	Action	Register
40-1-19	Amended	V. 16, p. 685
40-1-42	New	V. 16, p. 41
40-1-43	New	V. 16, p. 41
40-1-44	New	V. 16, p. 41
40-2-21	Revoked	V. 16, p. 972
40-2-24	New	V. 16, p. 482
40-3-5	Amended	V. 16, p. 686
40-3-26	Amended	V. 16, p. 686
40-3-27	Amended	V. 16, p. 686
40-3-49	Amended	V. 16, p. 686
40-4-17	Amended	V. 15, p. 77
40-4-35	Amended	V. 15, p. 622
40-4-37	Amended	V. 15, p. 77
40-4-37d	Amended	V. 15, p. 78
40-4-41c	Amended	V. 16, p. 686
40-5-109	Amended	V. 15, p. 78
40-7-20a	Amended	V. 16, p. 483
40-7-21	Amended	V. 16, p. 484
40-8-7	Amended	V. 16, p. 687

AGENCY 47: DEPARTMENT OF HEALTH AND ENVIRONMENT (MINED-LAND CONSERVATION AND RECLAMATION)

Reg. No.	Action	Register
47-1-1	Revoked	V. 16, p. 585
47-1-3	Amended	V. 16, p. 585
47-1-4	Revoked	V. 16, p. 585

47-1-8	Amended	V. 16, p. 585
47-1-9	Amended	V. 16, p. 586
47-1-10	Revoked	V. 16, p. 586
47-1-11	Amended	V. 16, p. 586
47-2-14	Revoked	V. 16, p. 586
47-2-21	Amended	V. 16, p. 586
47-2-53	Amended	V. 16, p. 586
47-2-53a	Amended	V. 16, p. 586
47-2-58	Amended	V. 16, p. 586
47-2-64	Amended	V. 16, p. 586
47-2-67	Amended	V. 16, p. 587
47-2-74	Amended	V. 16, p. 587
47-2-75	Amended	V. 16, p. 587
47-3-1	Amended	V. 16, p. 587
47-3-2	Amended	V. 16, p. 588
47-3-3a	Amended	V. 16, p. 588
47-3-42	Amended	V. 16, p. 588
47-4-14a	Amended	V. 16, p. 590
47-4-15	Amended	V. 16, p. 595
47-4-16	Amended	V. 16, p. 598
47-4-17	Amended	V. 16, p. 598
47-5-5a	Amended	V. 16, p. 599
47-5-16	Amended	V. 16, p. 601
47-6-1	Amended	V. 16, p. 601
47-6-2	Amended	V. 16, p. 601
47-6-3	Amended	V. 16, p. 601
47-6-4	Amended	V. 16, p. 602
47-6-6	Amended	V. 16, p. 602
47-6-7	Amended	V. 16, p. 602
47-6-8	Amended	V. 16, p. 603
47-6-9	Amended	V. 16, p. 603
47-6-10	Amended	V. 16, p. 603
47-7-2	Amended	V. 16, p. 603
47-8-9	Amended	V. 16, p. 604
47-8-11	Amended	V. 16, p. 604
47-9-1	Amended	V. 16, p. 604
47-9-2	Amended	V. 16, p. 607
47-9-4	Amended	V. 16, p. 607
47-10-1	Amended	V. 16, p. 608
47-11-8	Amended	V. 16, p. 608
47-12-4	Amended	V. 16, p. 608
47-13-4	Amended	V. 16, p. 609
47-13-5	Amended	V. 16, p. 609
47-13-6	Amended	V. 16, p. 610
47-14-7	Amended	V. 16, p. 610
47-15-1a	Amended	V. 16, p. 610
47-15-3	Amended	V. 16, p. 611
47-15-4	Amended	V. 16, p. 611
47-15-7	Amended	V. 16, p. 611
47-15-8	Amended	V. 16, p. 611
47-15-15	Amended	V. 16, p. 612
47-15-17	Amended	V. 16, p. 612
47-16-1		
through		
47-16-8	Amended	V. 16, p. 612-614
47-16-9	New	V. 16, p. 614
47-16-10	New	V. 16, p. 614
47-16-11	New	V. 16, p. 614

AGENCY 49: DEPARTMENT OF HUMAN RESOURCES

Reg. No.	Action	Register
49-45-10		
through		
49-45-19	Revoked	V. 15, p. 1709
49-49-1	Amended	V. 16, p. 1120
49-53-1	Revoked	V. 15, p. 1709
49-53-2	Revoked	V. 15, p. 1709

AGENCY 50: DEPARTMENT OF HUMAN RESOURCES—DIVISION OF EMPLOYMENT

Reg. No.	Action	Register
50-2-21	Amended	V. 15, p. 1707
50-2-25a		
through		
50-2-25e	New	V. 16, p. 1047

AGENCY 51: DEPARTMENT OF HUMAN RESOURCES—DIVISION OF WORKERS COMPENSATION

Reg. No.	Action	Register
51-9-7	Amended	V. 15, p. 345

(continued)

**AGENCY 60: BOARD OF NURSING**

Reg. No.	Action	Register
60-1-104	New	V. 16, p. 436
60-2-101	Amended	V. 16, p. 437
60-2-102	through	
60-2-108	New	V. 16, p. 437-440
60-3-106	Amended	V. 16, p. 440
60-9-109	Revoked	V. 15, p. 1807
60-11-103	Amended	V. 15, p. 1931
60-11-108	Amended	V. 15, p. 115
60-11-109	Revoked	V. 15, p. 115
60-11-112	Revoked	V. 15, p. 115
60-11-114	Revoked	V. 15, p. 115
60-11-117	Revoked	V. 15, p. 115
60-12-106	Amended	V. 15, p. 115
60-12-109	Revoked	V. 15, p. 116
60-13-112	Amended	V. 15, p. 116
60-13-115	Revoked	V. 15, p. 116
60-16-102	Amended	V. 15, p. 1807
60-16-104	Amended	V. 15, p. 1807

**AGENCY 65: BOARD OF EXAMINERS  
IN OPTOMETRY**

Reg. No.	Action	Register
65-3-10	Amended	V. 16, p. 1250
65-5-6	Amended	V. 16, p. 300
65-5-9	New	V. 16, p. 249
65-5-10	New	V. 16, p. 250
65-10-1	Amended	V. 16, p. 1176

**AGENCY 66: BOARD OF  
TECHNICAL PROFESSIONS**

Reg. No.	Action	Register
66-6-1	Amended	V. 15, p. 184
66-6-6	Amended	V. 15, p. 185
66-7-3	Amended	V. 15, p. 185
66-8-1	Amended	V. 15, p. 185
66-10-1	Amended	V. 15, p. 185
66-12-1	Amended	V. 15, p. 185
66-14-1	through	
66-14-12	New	V. 15, p. 186, 187

**AGENCY 68: BOARD OF PHARMACY**

Reg. No.	Action	Register
68-1-1f	Amended	V. 16, p. 1176
68-1-2a	New	V. 16, p. 1176
68-2-5	Amended	V. 16, p. 1177
68-2-9	Amended	V. 16, p. 1177
68-20-15a	Amended	V. 16, p. 1177

**AGENCY 69: BOARD OF COSMETOLOGY**

Reg. No.	Action	Register
69-1-1	Amended	V. 15, p. 292
69-1-2	Amended	V. 15, p. 292
69-1-3	Revoked	V. 15, p. 292
69-1-4	Amended	V. 15, p. 292
69-1-7	Revoked	V. 15, p. 293
69-1-8	Amended	V. 15, p. 293
69-2-1	Revoked	V. 15, p. 293
69-3-1	Amended	V. 15, p. 293
69-3-2	Revoked	V. 15, p. 293
69-3-3	Amended	V. 15, p. 293
69-3-4	Amended	V. 15, p. 294
69-3-5	Revoked	V. 15, p. 294
69-3-6	Amended	V. 15, p. 294
69-3-7	Amended	V. 15, p. 294
69-3-8	Amended	V. 15, p. 742
69-3-9	Amended	V. 15, p. 294
69-3-10	Revoked	V. 15, p. 294
69-3-11	Revoked	V. 15, p. 294
69-3-17	Revoked	V. 15, p. 294
69-3-19	Revoked	V. 15, p. 294
69-3-22	through	
69-3-25	Revoked	V. 15, p. 294
69-3-26	New	V. 15, p. 294
69-3-27	New	V. 15, p. 294
69-3-28	New	V. 15, p. 294
69-4-2	Amended	V. 15, p. 294
69-4-6	Revoked	V. 15, p. 295
69-4-9	Amended	V. 15, p. 295
69-4-11	Revoked	V. 15, p. 295

69-4-12	Amended	V. 15, p. 295
69-5-2	Revoked	V. 15, p. 295
69-5-6	Amended	V. 15, p. 295
69-5-10	Revoked	V. 15, p. 295
69-5-13	Revoked	V. 15, p. 295
69-5-14	New	V. 15, p. 295
69-5-15	New	V. 15, p. 295
69-5-16	New	V. 15, p. 295
69-6-1	Revoked	V. 15, p. 295
69-6-2	Amended	V. 15, p. 295
69-6-5	Amended	V. 15, p. 295
69-6-6	Revoked	V. 15, p. 296
69-6-7	Amended	V. 15, p. 296
69-8-2	Revoked	V. 15, p. 296
69-8-3	Revoked	V. 15, p. 296
69-8-4	Revoked	V. 15, p. 296
69-8-6	Revoked	V. 15, p. 296
69-11-1	Amended	V. 15, p. 296
69-11-2	Amended	V. 15, p. 296
69-13-1	Amended	V. 15, p. 296
69-13-2	Amended	V. 15, p. 296
69-14-1	through	
69-14-5	New	V. 15, p. 971, 972
69-15-1	through	
69-15-30	New	V. 16, p. 1281-1288

**AGENCY 70: BOARD OF VETERINARY  
MEDICAL EXAMINERS**

Reg. No.	Action	Register
70-1-1	Amended	V. 16, p. 173
70-1-6	New	V. 16, p. 441
70-2-1	Revoked	V. 16, p. 173
70-2-2	Revoked	V. 16, p. 173
70-2-3	Revoked	V. 16, p. 173
70-4-1	through	
70-4-7	Revoked	V. 16, p. 173
70-4-8	New	V. 16, p. 441
70-4-9	New	V. 16, p. 443
70-4-10	New	V. 16, p. 443
70-5-1	Amended	V. 16, p. 173
70-7-1	New	V. 16, p. 173
70-8-1	New	V. 16, p. 174
70-9-1	New	V. 16, p. 1289
70-10-1	New	V. 16, p. 175

**AGENCY 71: KANSAS DENTAL BOARD**

Reg. No.	Action	Register
71-4-1	Amended	V. 15, p. 1860
71-4-3	Amended	V. 15, p. 1860

**AGENCY 74: BOARD OF ACCOUNTANCY**

Reg. No.	Action	Register
74-1-5	Revoked	V. 16, p. 1119
74-1-6	New	V. 16, p. 1119
74-2-1	Amended	V. 16, p. 1119
74-12-1	Amended	V. 16, p. 1120

**AGENCY 75: CONSUMER  
CREDIT COMMISSIONER**

Reg. No.	Action	Register
75-6-3	Revoked	V. 15, p. 1129
75-6-4	Revoked	V. 15, p. 1129
75-6-7	Revoked	V. 15, p. 1129
75-6-8	Revoked	V. 15, p. 1129
75-6-9	Amended	V. 15, p. 1379
75-6-10	Revoked	V. 15, p. 1129
75-6-11	Revoked	V. 15, p. 1129
75-6-16	Revoked	V. 15, p. 1129
75-6-17	Revoked	V. 15, p. 1129
75-6-18	Revoked	V. 15, p. 1129
75-6-25	Revoked	V. 15, p. 1129
75-6-26	Amended	V. 16, p. 301
75-6-29	Revoked	V. 15, p. 1129
75-8-1	through	
75-8-11	Revoked	V. 15, p. 1129

**AGENCY 80: KANSAS PUBLIC EMPLOYEES  
RETIREMENT SYSTEM**

Reg. No.	Action	Register
80-8-2	Amended	V. 15, p. 1832
80-8-3	Amended	V. 15, p. 1832

80-8-4	Amended	V. 15, p. 1833
80-8-7	Amended	V. 15, p. 1833

**AGENCY 81: OFFICE OF THE  
SECURITIES COMMISSIONER**

Reg. No.	Action	Register
81-1-1	Amended	V. 15, p. 697
81-2-1	Amended	V. 15, p. 698
81-3-1	Amended	V. 15, p. 698
81-3-4	Revoked	V. 15, p. 700
81-4-1	Amended	V. 15, p. 700
81-5-1	Revoked	V. 15, p. 701
81-5-2	Revoked	V. 15, p. 701
81-5-3	Amended	V. 15, p. 701
81-5-4	Amended	V. 15, p. 701
81-5-7	Amended	V. 15, p. 701
81-5-9	Amended	V. 15, p. 702
81-6-1	Amended	V. 15, p. 702
81-7-2	Amended	V. 15, p. 703
81-8-1	Revoked	V. 15, p. 703
81-9-1	Revoked	V. 15, p. 703
81-13-1	Revoked	V. 15, p. 703

**AGENCY 82: STATE CORPORATION  
COMMISSION**

Reg. No.	Action	Register
82-3-101	Amended	V. 15, p. 1538
82-3-103	Amended	V. 15, p. 1541
82-3-206	Amended	V. 15, p. 1670
82-3-307	Amended	V. 15, p. 1670
82-3-700	through	
82-3-704	New	V. 15, p. 1542-1544

**AGENCY 86: REAL ESTATE COMMISSION**

Reg. No.	Action	Register
86-1-5	Amended	V. 15, p. 598
86-1-11	Amended	V. 15, p. 1831
86-3-25	Amended	V. 15, p. 1331

**AGENCY 91: DEPARTMENT OF  
EDUCATION**

Reg. No.	Action	Register
91-1-68c	Amended	V. 15, p. 1863
91-5-3	Amended	V. 15, p. 1864
91-10-2	Amended	V. 16, p. 409
91-12-22	Amended	V. 15, p. 226
91-12-61	Amended	V. 15, p. 230
91-31-1	Revoked	V. 15, p. 1864
91-31-2	Revoked	V. 15, p. 1864
91-31-3	Revoked	V. 15, p. 1864
91-31-4	Revoked	V. 15, p. 1864
91-31-4a	Revoked	V. 15, p. 1864
91-31-5	Revoked	V. 15, p. 1864
91-31-6	Revoked	V. 15, p. 1864
91-31-7	Revoked	V. 15, p. 1864
91-31-8	Revoked	V. 15, p. 1864
91-31-9	Revoked	V. 15, p. 1864
91-31-10	Revoked	V. 15, p. 1865
91-31-12a	through	
91-31-12h	Revoked	V. 15, p. 1865
91-31-13	Revoked	V. 15, p. 1865
91-31-14	Revoked	V. 15, p. 1865
91-31-14a	Revoked	V. 15, p. 1865
91-31-14b	Revoked	V. 15, p. 1865
91-31-14c	Revoked	V. 15, p. 1865
91-31-15	Revoked	V. 15, p. 1865
91-31-16	through	
91-31-30	New	V. 15, p. 1865-1869
91-33-1	through	
91-33-8	Revoked	V. 15, p. 1869
91-34-1	through	
91-34-5	Revoked	V. 15, p. 1870
91-34-7	through	
91-34-14	Revoked	V. 15, p. 1870

**AGENCY 94: BOARD OF TAX APPEALS**

Reg. No.	Action	Register
94-2-1		
through		
94-2-12	Amended	V. 16, p. 1242-1245
94-2-13		
through		
94-2-18	New	V. 16, p. 1245, 1246
94-3-1	Amended	V. 16, p. 1246
94-3-2	Amended	V. 16, p. 1246

**AGENCY 98: KANSAS WATER OFFICE**

Reg. No.	Action	Register
98-5-1	Amended	V. 15, p. 1708
98-5-8	New	V. 15, p. 1709

**AGENCY 100: BOARD OF HEALING ARTS**

Reg. No.	Action	Register
100-6-2	Amended	V. 16, p. 737
100-15-1	Amended	V. 16, p. 1176
100-23-1	Amended	V. 16, p. 1174
100-29-1		
through		
100-29-14	New	V. 16, p. 380-384
100-34-3	Revoked	V. 16, p. 384
100-34-4	Revoked	V. 16, p. 384
100-35-1	Revoked	V. 16, p. 384
100-35-3	Revoked	V. 16, p. 384
100-35-6	Revoked	V. 16, p. 384
100-35-7	Revoked	V. 16, p. 384
100-36-1	Revoked	V. 16, p. 384
100-37-1	Revoked	V. 16, p. 384
100-37-2	Revoked	V. 16, p. 384
100-38-1	Revoked	V. 16, p. 385
100-39-1	Revoked	V. 16, p. 385
100-40-2	Revoked	V. 16, p. 385
100-42-2	Revoked	V. 16, p. 385
100-46-1	Revoked	V. 16, p. 385
100-46-2	Revoked	V. 16, p. 385
100-46-3	Revoked	V. 16, p. 385
100-46-5	Revoked	V. 16, p. 385
100-46-6	Revoked	V. 16, p. 385
100-47-1	Revoked	V. 16, p. 385
100-49-5	Amended	V. 16, p. 1176
100-54-7	Amended	V. 16, p. 142
100-55-1		
through		
100-55-8	Amended	V. 15, p. 1928-1930
100-55-9	New	V. 15, p. 1930
100-55-10	New	V. 15, p. 1930
100-67-1	New	V. 16, p. 1174
100-69-1		
through		
100-69-9	New	V. 15, p. 1021, 1022

**AGENCY 104: STATE BANKING DEPARTMENT, CONSUMER CREDIT COMMISSIONER AND DEPARTMENT OF CREDIT UNIONS**

Reg. No.	Action	Register
104-1-2*	Amended	V. 15, p. 1129

**AGENCY 105: BOARD OF INDIGENTS' DEFENSE SERVICES**

Reg. No.	Action	Register
105-3-2	Amended	V. 15, p. 1583
105-3-12	New	V. 15, p. 1584
105-4-2	Amended	V. 15, p. 1584
105-5-4	Amended	V. 15, p. 1584

**AGENCY 108: STATE EMPLOYEES HEALTH CARE COMMISSION**

Reg. No.	Action	Register
108-1-1	Amended	V. 16, p. 651

**AGENCY 109: BOARD OF EMERGENCY MEDICAL SERVICES**

Reg. No.	Action	Register
109-1-1	Amended	V. 16, p. 77
109-1-2	New	V. 16, p. 79
109-2-1	Amended	V. 16, p. 79
109-2-2	Amended	V. 16, p. 79
109-2-3	Revoked	V. 16, p. 79

109-2-4	through	
109-2-9	Amended	V. 16, p. 79-84
109-2-11	Amended	V. 16, p. 85
109-2-12	Amended	V. 16, p. 86
109-2-13	New	V. 16, p. 87
109-2-14	New	V. 16, p. 89
109-3-1	Amended	V. 16, p. 89
109-4-1	Revoked	V. 16, p. 89
109-4-2	Revoked	V. 16, p. 89
109-4-3	Revoked	V. 16, p. 89
109-5-1	Amended	V. 15, p. 1585
109-6-1	Amended	V. 15, p. 1586
109-6-2	New	V. 15, p. 1586
109-7-1	Amended	V. 15, p. 1586
109-8-1	Amended	V. 16, p. 685
109-10-1	Amended	V. 15, p. 1587
109-14-1	New	V. 16, p. 89

**AGENCY 111: KANSAS LOTTERY**

Reg. No.	Action	Register
111-1-2	Amended	V. 7, p. 1190
111-1-5	Amended	V. 15, p. 1304
111-2-1	Amended	V. 16, p. 1043
111-2-2	Amended	V. 12, p. 1261
111-2-2a		
through		
111-2-2e	New	V. 14, p. 1633, 1634
111-2-4	Amended	V. 15, p. 1953
111-2-6	Revoked	V. 13, p. 149
111-2-7	Revoked	V. 10, p. 1210
111-2-13	Revoked	V. 10, p. 881
111-2-14	Amended	V. 14, p. 1634
111-2-15	Revoked	V. 10, p. 881
111-2-16	Revoked	V. 10, p. 1210
111-2-17	Revoked	V. 10, p. 1210
111-2-18	Revoked	V. 11, p. 413
111-2-19	Revoked	V. 11, p. 413
111-2-20		
through		
111-2-26	Revoked	V. 13, p. 1401
111-2-27	Revoked	V. 14, p. 972
111-2-28	New	V. 12, p. 1844
111-2-29	Revoked	V. 14, p. 972
111-2-30	Amended	V. 15, p. 1180
111-2-31	New	V. 14, p. 170
111-2-32		
through		
111-2-42	Revoked	V. 16, p. 448, 449
111-2-43	New	V. 15, p. 287
111-2-44	New	V. 15, p. 288
111-2-45	New	V. 15, p. 288
111-2-46	New	V. 15, p. 624
111-2-47	Amended	V. 16, p. 449
111-2-48	New	V. 15, p. 1055
111-2-49	New	V. 15, p. 1055
111-2-50	New	V. 15, p. 1056
111-2-51	New	V. 15, p. 1440
111-2-52	New	V. 15, p. 1441
111-2-53	New	V. 15, p. 1710
111-2-54	New	V. 15, p. 1920
111-2-55	New	V. 15, p. 1953
111-2-56	New	V. 16, p. 449
111-2-57	New	V. 16, p. 449
111-2-58	New	V. 16, p. 689
111-2-59	New	V. 16, p. 1043
111-2-60	New	V. 16, p. 1209
111-2-62	New	V. 16, p. 1209
111-3-1	Amended	V. 14, p. 908
111-3-6	Amended	V. 12, p. 677
111-3-9	Revoked	V. 11, p. 1793
111-3-10		
through		
111-3-31	New	V. 7, p. 201-206
111-3-11	Amended	V. 13, p. 35
111-3-12	Amended	V. 13, p. 1826
111-3-13	Amended	V. 11, p. 1148
111-3-14	Amended	V. 13, p. 1826
111-3-16	Amended	V. 9, p. 1566
111-3-19		
through		
111-3-22	Amended	V. 9, p. 30
111-3-19	Revoked	V. 13, p. 1827
111-3-20	Amended	V. 11, p. 1148
111-3-21	Amended	V. 11, p. 1148

111-3-22	Amended	V. 11, p. 1148
111-3-23	Revoked	V. 10, p. 883
111-3-25	Amended	V. 13, p. 1827
111-3-26	Amended	V. 11, p. 1149
111-3-27	Amended	V. 11, p. 1149
111-3-29	Revoked	V. 11, p. 1149
111-3-31	Amended	V. 8, p. 209
111-3-32	Amended	V. 10, p. 883
111-3-33	New	V. 7, p. 1434
111-3-34	New	V. 13, p. 149
111-3-35	Amended	V. 14, p. 909
111-3-36	New	V. 13, p. 877
111-3-37	New	V. 13, p. 877
111-4-1		
through		
111-4-5	Revoked	V. 12, p. 113
111-4-5a	Revoked	V. 12, p. 113
111-4-6		
through		
111-4-15	Revoked	V. 12, p. 113
111-4-66		
through		
111-4-77	New	V. 7, p. 207-209
111-4-96		
through		
111-4-114	New	V. 7, p. 1606-1610
111-4-100	Amended	V. 14, p. 972
111-4-101		
through		
111-4-106	Revoked	V. 16, p. 450
111-4-106a	Revoked	V. 16, p. 450
111-4-107		
through		
111-4-114	Revoked	V. 16, p. 450, 451
111-4-153		
through		
111-4-160	Revoked	V. 9, p. 1676, 1677
111-4-177		
through		
111-4-212	Revoked	V. 9, p. 1677, 1678
111-4-213		
through		
111-4-220	Revoked	V. 10, p. 1213
111-4-221		
through		
111-4-224	Revoked	V. 10, p. 1585
111-4-225		
through		
111-4-228	Revoked	V. 10, p. 1585
111-4-229		
through		
111-4-236	Revoked	V. 10, p. 1585, 1586
111-4-237		
through		
111-4-240	Revoked	V. 11, p. 413
111-4-241		
through		
111-4-244	Revoked	V. 12, p. 1371
111-4-245		
through		
111-4-248	Revoked	V. 12, p. 1371
111-4-249		
through		
111-4-256	Revoked	V. 12, p. 113, 114
111-4-257		
through		
111-4-286	Revoked	V. 11, p. 413, 414
111-4-287		
through		
111-4-290	Revoked	V. 12, p. 1371
111-4-291		
through		
111-4-300	Revoked	V. 12, p. 114
111-4-301		
through		
111-4-307	Revoked	V. 13, p. 1402
111-4-308		
through		
111-4-317	Revoked	V. 16, p. 451
111-4-318		
through		
111-4-321	Revoked	V. 12, p. 114

(continued)



111-4-322 through							
111-4-327	Revoked	V. 12, p. 1371					
111-4-328 through							
111-4-335	Revoked	V. 12, p. 114					
111-4-336 through							
111-4-340	Revoked	V. 16, p. 451					
111-4-341	Revoked	V. 11, p. 1473					
111-4-341a	Revoked	V. 12, p. 1372					
111-4-341b	Revoked	V. 16, p. 451					
111-4-341c	Revoked	V. 16, p. 451					
111-4-342 through							
111-4-345	Revoked	V. 16, p. 451					
111-4-346 through							
111-4-349	Revoked	V. 12, p. 114					
111-4-350 through							
111-4-355	Revoked	V. 16, p. 452					
111-4-356 through							
111-4-361	Revoked	V. 14, p. 7					
111-4-362 through							
111-4-365	Revoked	V. 12, p. 114, 115					
111-4-366 through							
111-4-369	Revoked	V. 12, p. 1373					
111-4-370 through							
111-4-379	Revoked	V. 14, p. 7, 8					
111-4-380 through							
111-4-383	Revoked	V. 12, p. 1664					
111-4-384 through							
111-4-387	Revoked	V. 12, p. 1373					
111-4-388 through							
111-4-391	Revoked	V. 12, p. 1373					
111-4-392 through							
111-4-400	Revoked	V. 16, p. 252					
111-4-401 through							
111-4-404	Revoked	V. 12, p. 1373					
111-4-405 through							
111-4-413	Revoked	V. 16, p. 452					
111-4-414 through							
111-4-428	Revoked	V. 14, p. 8					
111-4-429 through							
111-4-432	Revoked	V. 12, p. 1373					
111-4-433 through							
111-4-436	Revoked	V. 12, p. 1374					
111-4-437 through							
111-4-440	Revoked	V. 12, p. 1374					
111-4-441 through							
111-4-444	Revoked	V. 14, p. 8					
111-4-445 through							
111-4-448	Revoked	V. 12, p. 1374					
111-4-449 through							
111-4-453	Revoked	V. 14, p. 8					
111-4-454 through							
111-4-465	Revoked	V. 12, p. 1664, 1665					
111-4-466 through							
111-4-469	Revoked	V. 12, p. 1665					
111-4-470 through							
111-4-477	Revoked	V. 16, p. 452, 453					
111-4-478 through							
111-4-492	Revoked	V. 14, p. 974, 975					
111-4-493 through							
111-4-496	Revoked	V. 16, p. 453					
111-4-497 through							
111-4-512	Revoked	V. 14, p. 975					
111-4-513 through							
111-4-521	Revoked	V. 16, p. 453					
111-4-522 through							
111-4-571	Revoked	V. 14, p. 975-977					
111-4-572 through							
111-4-585	New	V. 13, p. 878-880					
111-4-572	Amended	V. 16, p. 1044					
111-4-574	Amended	V. 16, p. 1044					
111-4-575	Amended	V. 16, p. 1044					
111-4-576	Amended	V. 16, p. 1044					
111-4-577	Amended	V. 16, p. 1044					
111-4-579	Amended	V. 16, p. 1045					
111-4-581	Amended	V. 16, p. 1045					
111-4-582	Amended	V. 16, p. 1045					
111-4-583	Amended	V. 15, p. 883					
111-4-584	Amended	V. 16, p. 1045					
111-4-586 through							
111-4-606	Revoked	V. 14, p. 977, 978					
111-4-607 through							
111-4-619	New	V. 13, p. 1436-1438					
111-4-607	Amended	V. 14, p. 1407					
111-4-609	Amended	V. 14, p. 1407					
111-4-610	Amended	V. 14, p. 1407					
111-4-611	Amended	V. 14, p. 1407					
111-4-613	Amended	V. 14, p. 1408					
111-4-616 through							
111-4-623	Revoked	V. 14, p. 978					
111-4-624 through							
111-4-702	Revoked	V. 16, p. 453-455					
111-4-703 through							
111-4-723	New	V. 14, p. 909-914					
111-4-724 through							
111-4-736	New	V. 14, p. 978-981					
111-4-737 through							
111-4-749	New	V. 14, p. 1095-1098					
111-4-750 through							
111-4-757	New	V. 14, p. 1408, 1409					
111-4-758 through							
111-4-761	New	V. 14, p. 1502, 1503					
111-4-762 through							
111-4-778	New	V. 14, p. 1410-1414					
111-4-769	Amended	V. 14, p. 1503					
111-4-779 through							
111-4-791	New	V. 14, p. 1504-1507					
111-4-792 through							
111-4-803	New	V. 14, p. 1635-1638					
111-4-804 through							
111-4-816	New	V. 15, p. 116-119					
111-4-817 through							
111-4-824	New	V. 15, p. 289, 290					
111-4-825 through							
111-4-838	New	V. 15, p. 449-452					
111-4-839 through							
111-4-854	New	V. 15, p. 624-627					
111-4-855 through							
111-4-859	New	V. 15, p. 884, 885					
111-4-855	Amended	V. 15, p. 1181					
111-4-860 through							
111-4-872	New	V. 15, p. 1056-1059					
111-4-871	Amended	V. 15, p. 1181					
111-4-873 through							
111-4-892	New	V. 15, p. 1181-1186					
111-4-893 through							
111-4-910	New	V. 15, p. 1441-1445					
111-4-911 through							
111-4-918	New	V. 15, p. 1475, 1476					
111-4-915	Amended	V. 15, p. 1954					
111-4-918	Amended	V. 15, p. 1954					
111-4-919 through							
111-4-941	New	V. 15, p. 1710-1716					
111-4-942 through							
111-4-965	New	V. 15, p. 1921-1926					
111-4-946	Amended	V. 15, p. 1954					
111-4-962	Amended	V. 16, p. 341					
111-4-963	Amended	V. 16, p. 341					
111-4-966 through							
111-4-970	New	V. 15, p. 1954, 1955					
111-4-971 through							
111-4-982	New	V. 16, p. 341-344					
111-4-983 through							
111-4-991	New	V. 16, p. 456, 457					
111-4-992 through							
111-4-1012	New	V. 16, p. 689-694					
111-4-996a	New	V. 16, p. 1080					
111-4-1013 through							
111-4-1016	New	V. 16, p. 1045, 1046					
111-4-1017 through							
111-4-1037	New	V. 16, p. 1081-1085					
111-4-1038 through							
111-4-1041	New	V. 16, p. 1209, 1210					
111-5-1 through							
111-5-23	New	V. 7, p. 209-213					
111-5-9 through							
111-5-19	Revoked	V. 15, p. 291					
111-5-21 through							
111-5-33	New	V. 11, p. 415-418					
111-5-21	Revoked	V. 15, p. 291					
111-5-22	Amended	V. 13, p. 1438					
111-5-23	Amended	V. 15, p. 1059					
111-5-24	Amended	V. 11, p. 983					
111-5-25	Amended	V. 15, p. 1059					
111-5-27	Amended	V. 11, p. 482					
111-5-28	Amended	V. 15, p. 1060					
111-5-29	Amended	V. 15, p. 1060					
111-5-34	New	V. 12, p. 318					
111-5-34a	Amended	V. 14, p. 1098					
111-5-35 through							
111-5-38	Revoked	V. 13, p. 1439					
111-5-39 through							
111-5-44	New	V. 15, p. 1022, 1023					
111-5-45 through							
111-5-50	New	V. 15, p. 1060-1062					
111-5-52 through							
111-5-57	New	V. 16, p. 458, 459					
111-5-58 through							
111-5-63	New	V. 16, p. 1085-1087					
111-5-46	Amended	V. 15, p. 1186					
111-5-51	New	V. 15, p. 1477					
111-6-1 through							
111-6-15	New	V. 7, p. 213-217					



111-6-1	Amended	V. 15, p. 1445
111-6-3	Amended	V. 14, p. 313
111-6-4	Amended	V. 10, p. 1413
111-6-5	Amended	V. 15, p. 1187
111-6-6	Amended	V. 11, p. 1973
111-6-7	Amended	V. 11, p. 1477
111-6-7a	Amended	V. 15, p. 1188
111-6-8	Revoked	V. 12, p. 1263
111-6-9	Revoked	V. 14, p. 313
111-6-11	Revoked	V. 12, p. 1376
111-6-12	Amended	V. 8, p. 212
111-6-13	Amended	V. 8, p. 299
111-6-15	Amended	V. 12, p. 677
111-6-17	Revoked	V. 10, p. 1475
111-6-18	New	V. 13, p. 150
111-6-19	New	V. 13, p. 340
111-6-20	Amended	V. 15, p. 1716
111-6-21	New	V. 13, p. 881
111-6-22	New	V. 13, p. 881
111-6-23	New	V. 13, p. 881
111-7-1	through	
111-7-10	New	V. 7, p. 1192, 1193
111-7-1	Amended	V. 8, p. 212
111-7-3	Amended	V. 11, p. 1796
111-7-3a	Revoked	V. 13, p. 340
111-7-4	Amended	V. 9, p. 1367
111-7-5	Amended	V. 9, p. 986
111-7-6	Amended	V. 9, p. 987
111-7-9	Amended	V. 12, p. 1263
111-7-11	Amended	V. 15, p. 1188
111-7-12	through	
111-7-32	New	V. 7, p. 1194-1196
111-7-33	through	
111-7-43	New	V. 7, p. 1197, 1198
111-7-33a	New	V. 8, p. 300
111-7-44	through	
111-7-54	Revoked	V. 13, p. 340
111-7-46	Amended	V. 11, p. 1152
111-7-54	Amended	V. 11, p. 1511
111-7-55	through	
111-7-63	Revoked	V. 10, p. 1217
111-7-60	Amended	V. 10, p. 262
111-7-64	through	
111-7-75	New	V. 11, p. 13, 14
111-7-66	Amended	V. 15, p. 1304
111-7-66a	Revoked	V. 13, p. 340
111-7-75	through	
111-7-78	Amended	V. 15, p. 1188
111-7-76	through	
111-7-78	New	V. 11, p. 1478-1480
111-7-79	Revoked	V. 13, p. 340
111-7-80	through	
111-7-83	New	V. 11, p. 1478-1480
111-7-81	Amended	V. 15, p. 1189
111-7-83	Amended	V. 15, p. 1189
111-7-84	through	
111-7-93	Revoked	V. 15, p. 291
111-7-94	Revoked	V. 13, p. 340

111-7-95	through	
111-7-118	Revoked	V. 15, p. 291, 292
111-7-119	through	
111-7-127	New	V. 15, p. 1189-1191
111-7-122	Amended	V. 15, p. 1477
111-7-123	Amended	V. 15, p. 1477
111-7-124	Amended	V. 15, p. 1477
111-7-126	Amended	V. 15, p. 1304
111-7-128	New	V. 15, p. 1446
111-8-1	New	V. 7, p. 1633
111-8-2	New	V. 7, p. 1633
111-8-3	Amended	V. 10, p. 886
111-8-4	New	V. 7, p. 1714
111-8-4a	Revoked	V. 13, p. 1406
111-8-5	through	
111-8-13	New	V. 7, p. 1634
111-8-14	New	V. 13, p. 881
111-8-15	New	V. 13, p. 881
111-9-1	through	
111-9-12	New	V. 7, p. 1714-1716
111-9-1	through	
111-9-6	Revoked	V. 9, p. 1680
111-9-13	through	
111-9-18	Revoked	V. 9, p. 1680
111-9-25	through	
111-9-30	New	V. 9, p. 699, 700
111-9-31	through	
111-9-36	New	V. 10, p. 262
111-9-37	through	
111-9-48	New	V. 10, p. 1439, 1440
111-9-49	through	
111-9-54	New	V. 12, p. 318, 319
111-9-55	through	
111-9-60	New	V. 12, p. 1263, 1264
111-9-61	through	
111-9-78	New	V. 16, p. 1087-1089
111-10-1	through	
111-10-9	New	V. 8, p. 136-138
111-10-7	Amended	V. 8, p. 301

**AGENCY 112: KANSAS RACING AND GAMING COMMISSION**

Reg. No.	Action	Register
112-3-17	Amended	V. 15, p. 182
112-3-19	Amended	V. 15, p. 222
112-3-21	New	V. 16, p. 1151
112-4-1	Amended	V. 16, p. 1151
112-4-4a	New	V. 15, p. 182
112-4-4b	New	V. 15, p. 1709
112-4-14b	Amended	V. 15, p. 1379
112-4-26	New	V. 16, p. 1152
112-5-1	Amended	V. 15, p. 1125
112-5-2	Amended	V. 15, p. 224
112-6-1	Amended	V. 15, p. 1126
112-6-2	Amended	V. 15, p. 224

112-7-18	Amended	V. 15, p. 1801
112-10-6	Amended	V. 16, p. 379
112-10-35	Amended	V. 15, p. 1126
112-10-38	Amended	V. 15, p. 887
112-11-13a	Amended	V. 15, p. 1127
112-11-20	Amended	V. 15, p. 1127
112-16-14	Amended	V. 16, p. 380
112-17-15	Amended	V. 15, p. 888
112-18-3	Amended	V. 16, p. 1152
112-18-21	New	V. 15, p. 1589
112-18-22	New	V. 15, p. 1590

**AGENCY 115: DEPARTMENT OF WILDLIFE AND PARKS**

Reg. No.	Action	Register
115-2-1	Amended	V. 16, p. 248
115-2-5	Amended	V. 15, p. 1093
115-4-1	Amended	V. 16, p. 823
115-4-3	Amended	V. 16, p. 824
115-4-5	Amended	V. 16, p. 825
115-4-6	Amended	V. 16, p. 826
115-4-7	Amended	V. 16, p. 828
115-4-13	Amended	V. 16, p. 829
115-14-3	Amended	V. 16, p. 1175
115-14-9	Amended	V. 16, p. 1175
115-30-3	Amended	V. 16, p. 249
115-30-6	Amended	V. 16, p. 249

**AGENCY 117: REAL ESTATE APPRAISAL BOARD**

Reg. No.	Action	Register
117-1-1	Amended	V. 15, p. 489
117-2-2	Amended	V. 16, p. 302
117-3-2	Amended	V. 16, p. 303
117-4-2	Amended	V. 16, p. 304
117-6-3	Amended	V. 15, p. 489
117-8-1	Amended	V. 15, p. 490

**AGENCY 121: DEPARTMENT OF CREDIT UNIONS**

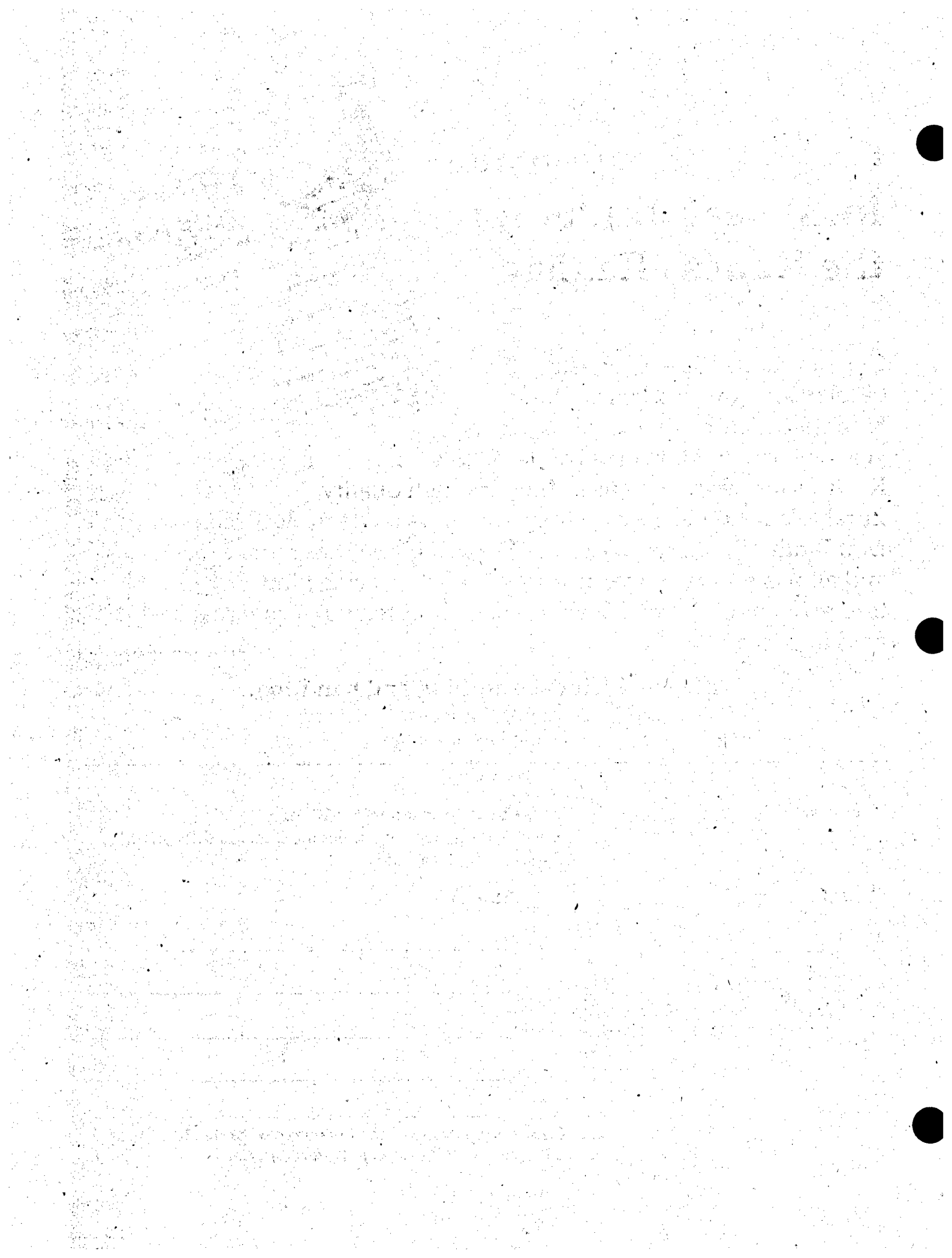
Reg. No.	Action	Register
121-2-1	New	V. 15, p. 887
121-3-1	New	V. 15, p. 1474
121-4-1	through	
121-4-11	New	V. 16, p. 72-77
121-5-1	New	V. 16, p. 1048
121-5-2	New	V. 16, p. 1048

**AGENCY 122: POOLED MONEY INVESTMENT BOARD**

Reg. No.	Action	Register
122-2-2	Amended	V. 16, p. 42
122-3-1	Amended	V. 16, p. 42
122-3-2	Amended	V. 16, p. 43
122-3-3	Amended	V. 16, p. 43
122-3-4	Amended	V. 16, p. 43
122-3-5	Amended	V. 16, p. 43
122-3-7	Amended	V. 16, p. 43
122-3-9	Amended	V. 16, p. 44
122-3-10	Amended	V. 16, p. 44
122-3-11	Amended	V. 16, p. 44
122-4-1	Amended	V. 16, p. 44
122-5-1	Amended	V. 16, p. 44

**AGENCY 123: JUVENILE JUSTICE AUTHORITY**

Reg. No.	Action	Register
123-2-1	New	V. 16, p. 1173



# Order a custom-made loose-leaf binder for the Kansas Register!



Custom-made Kansas Register binders are now available. These binders will attractively hold up to a year's worth of your copies of the Kansas Register for permanent use. They are high quality, durable casebound Swing Hinge® binders made by McBee Loose Leaf Binder Products. (A Swing Hinge® binder has more capacity and allows for easier interfiling than standard ring binders.) The three-inch binders feature dark blue supported vinyl covering and gold imprinting.

In this issue	Page
Kansas Technology Enterprise Corporation	259
Notice of meeting	259
Kansas Inc.	259
Notice of meeting	259
Kansas Advisory Committee on Hispanic Affairs	259
Notice of meeting	259
Kansas Judicial Council	259
Notice of meetings	260
State Board of Indigent's Defense Services	260
Notice of meeting	261
State Appraisal Board	261
Notice of hearing on proposed administrative regulations	261
State Emergency Response Commission	261
Notice of meeting	261
Legislative bills introduced February 16-22	261
Kansas Law Enforcement Training Commission	261
Notice of meeting	261
Social and Rehabilitation Services	261
Request for proposals	261

**\$12 each, includes shipping and handling.**

(Kansas residents must include an additional \$.74 state and local sales tax.)

-----  
Clip and mail

Please send \_\_\_\_\_

**Kansas Register Binders @ \$12 each**

(Note: Kansas residents must include an additional \$.74 state and local sales tax.)

Total enclosed \_\_\_\_\_

Ship to:

\_\_\_\_\_

\_\_\_\_\_

\_\_\_\_\_

\_\_\_\_\_

Shipping is by  
U.P.S. Delivery Service -  
Street address is necessary.

-----  
Mail this form, with payment, to: Kansas Register, Kansas Secretary of State, 2nd Floor,  
State Capitol, 300 S.W. 10th Ave., Topeka, KS 66612-1594

Kansas Register  
Secretary of State  
2nd Floor, State Capitol  
300 S.W. 10th Ave.  
Topeka, KS 66612-1594

---

Use this form or a copy of it to enter a subscription:

\_\_\_\_\_ One-year subscriptions @ \$70 ea.  
(Kansas residents must include  
\$4.31 state and local sales tax.)

Total Enclosed \_\_\_\_\_  
(Make checks payable to the Kansas Register)

**Send to:** \_\_\_\_\_

(Please, no  
more than  
4 address  
lines.)

\_\_\_\_\_  
\_\_\_\_\_  
\_\_\_\_\_  
\_\_\_\_\_

Zip code must be included

This space for Register office use only.
Rec. No. _____
Exp. _____
Code _____

---

Use this form or a copy of it to enter a name or address change:

Remove your mailing label (above) and affix it here:

Indicate change of name or address  
here:

\_\_\_\_\_  
\_\_\_\_\_  
\_\_\_\_\_  
\_\_\_\_\_

---

Mail either form to: Kansas Register, Secretary of State, 2nd Floor,  
State Capitol, 300 S.W. 10th Ave., Topeka, KS 66612-1594