

Kansas Register

Ron Thornburgh, Secretary of State

Vol. 16, No. 27 July 3, 1997 Pages 1099-1128

In this issue	Page
Kansas Commission on Veterans' Affairs	
Notice of meeting	1100
State Fair Board	
Notice of meeting	1100
Legislative interim committee schedule	1100
Advisory Committee on Children and Families	
Notice of meeting	1101
Social and Rehabilitation Services	
Notice of hearing on proposed administrative regulations	1101
Attorney General	
Opinions No. 97-50 through 97-62	1102
Notice of available funding for assistance to crime victims	1104
Notice of available funding for drug and violence prevention programs	1104
Secretary of State	
Usury rate for July	1104
State Emergency Response Commission	
Notice of meeting	1104
Kansas Insurance Department	
Notice of change in pharmacy network	1105
Notice of hearing on proposed administrative regulations	1105
University of Kansas Medical Center	
Notice to bidders	1105
Kansas State University	
Notice to bidders	1105
Kansas Judicial Council	
Notice of meetings	1105
State Corporation Commission	
Notice of motor carrier hearings	1106
Office of the Governor	
State Finance Council Resolution concerning effective date of House Substitute for Senate Bill 140	1106
Department of Administration—Division of Purchases	
Notice to bidders for state purchases	1107
Kansas Water Authority	
Notice of meeting	1108
Department of Health and Environment	
Requests for comments on proposed air quality permits	1108, 1109, 1110, 1111
Notice of hearing	1110
Notice concerning municipal solid waste landfill permit	1111
Notice concerning Kansas water pollution control permits	1112
Pooled Money Investment Board	
Notice of investment rates	1110
State Records Board	
Notice of meeting	1111
Notice of Bond Redemption	
City of Wichita	1114
Department of Transportation	
Notice to contractors	1115
Notice of Bond Sale	
City of Hays	1116
City of Kingman	1117
Consolidated Fire District No. 2, Northeast Johnson County	1118
City of Louisburg	1119
State Conservation Commission	
Notices to contractors	1117, 1118
Permanent Administrative Regulations	
Board of Accountancy	1119
Department of Human Resources	1120
Index to administrative regulations	1121

State of Kansas

Commission on Veterans' Affairs

Notice of Meeting

The Kansas Commission on Veterans' Affairs will meet at 1 p.m. Friday, July 11, in Room 243, Winfield State Hospital Building, 2016 Juniper Circle, Winfield. The public is invited to attend.

Don A. Myer
Executive Director

Doc. No. 019312

State of Kansas

State Fair Board

Notice of Meeting

The State Fair Board will meet at 11:30 a.m. Sunday, July 13, and at 8 a.m. Monday, July 14, in the board room of the Administration Office on the fairgrounds in Hutchinson. For further information, contact Deana Novak at (316) 669-3612.

Glenna Rindt
President

Doc. No. 019311

State of Kansas

Legislature

Interim Committee Schedule

The following committee meetings have been scheduled during the period of July 7 through July 20:

Date	Room	Time	Committee	Agenda
July 8	514-S	10:00 a.m.	Joint Committee on State	Agenda not available.
July 9	514-S	9:00 a.m.	Building Construction	
July 10	313-S	8:30 a.m.	Task Force on Retail	Agenda not available.
July 11	313-S	8:30 a.m.	Wheeling	
July 17	313-S	9:00 a.m.	Task Force on Retail	Agenda not available.
July 18	313-S	9:00 a.m.	Wheeling	
July 17			Joint Committee on Arts and	Agenda not available.
July 18			Cultural Resources	

Emil Lutz
Director of Legislative
Administrative Services

Doc. No. 019313

The Kansas Register (ISSN No. 0662-190) is an official publication of the State of Kansas, published by authority of K.S.A. 75-430. The Kansas Register is published weekly by the Kansas Secretary of State, State Capitol, Topeka, KS 66612-1594. One-year subscriptions are \$70 (Kansas residents must include \$4.31 state and local sales tax). Single copies may be purchased, if available, for \$2 each. Periodicals postage paid at Topeka, KS.

Postmaster: Send change of address form to Kansas Register, Secretary of State, State Capitol, 300 S.W. 10th Ave., Topeka, KS 66612-1594.

© Kansas Secretary of State 1997. Reproduction of this publication in its entirety or for commercial purposes is prohibited without prior permission. Official enactments of the Kansas Legislature and proposed and adopted administrative regulations of state agencies may be reproduced in any form without permission.

PUBLISHED BY
Ron Thornburgh
Secretary of State
2nd Floor, State Capitol
300 S.W. 10th Ave.
Topeka, KS 66612-1594
(913) 296-4564



Register Office:
Room 233-N, State Capitol
(913) 296-3489
Fax (913) 291-3051

State of Kansas

Advisory Committee on Children and Families**Notice of Meeting**

The Governor's Advisory Committee on Children and Families will meet at 10 a.m. Thursday, July 24, in the SRS board room, sixth floor, Docking State Office Building, 915 S.W. Harrison, Topeka. The advisory committee was established by the Governor under Executive Order No. 97-1 and shall serve in an advisory capacity to the Governor in developing and implementing a coordinated, comprehensive service delivery system to serve the children and families of Kansas. For more information, contact Hope Burns at (913) 296-3969.

John Zutavern
Chair

Doc. No. 019301

State of Kansas

Social and Rehabilitation Services**Notice of Hearing on Proposed Administrative Regulations**

A public hearing will be conducted at 9 a.m. Wednesday, September 3, in the SRS board room, sixth floor, Docking State Office Building, 915 S.W. Harrison, Topeka, to consider the adoption of amendments to existing rules and regulations on a permanent basis effective 15 days after publication in the Kansas Register. Telephone conference will not be available.

This 60-day notice of the public hearing shall constitute a public comment period for the proposed regulations. All interested parties may submit written comments prior to or during the public hearing to Hope Burns, Office of the Secretary, Department of Social and Rehabilitation Services, Docking State Office Building, Room 603-N, 915 S.W. Harrison, Topeka, 66612. All interested parties will be given a reasonable opportunity to present their views; it may be necessary to request each participant to limit any oral presentation to five minutes. The phrase "Federal Mandate" following an item indicates that the change is required by federal policy. Optional changes in regulations related to federal programs are subject to approval by the U.S. Department of Health and Human Services.

Copies of the regulations and the economic impact statements may be obtained by contacting Hope Burns, (913) 296-3969.

Any individual with a disability may request accommodation in order to participate in the public hearing and may request the proposed regulations and economic impact statements in an accessible format. Requests for accommodation should be made at least five working days in advance of the hearing by contacting Hope Burns or by calling the Kansas Relay Center at 1-800-766-3777.

The adoption of the regulations will take place at 9 a.m. Friday, September 5, in the SRS executive conference room, 603-N, Docking State Office Building. Telephone conference will not be available.

A summary of the proposed regulations and the economic impact follows.

Article 2.—GENERAL

30-2-17. Administration of certain long-term care programs. This regulation makes permanent the temporary regulation pertaining to the transfer of long-term care programs from Social and Rehabilitation Services to the Department on Aging and is required by K.S.A. 75-5321a, which directs the Secretary of SRS to transfer the administration of certain long-term care programs and services to the Secretary of Aging. This regulation will authorize and allow this mandated transfer.

Economic Impact: This regulation is cost neutral. The funds spent by SRS for these services will now be transferred to the Department on Aging.

Bearer of Cost: None.

Affected Parties:

1. The staff of the Department of Social and Rehabilitation Services and the Department on Aging.

Other Methods: This regulation is the result of a legislative mandated transfer of certain services from the Kansas Department of Social and Rehabilitation Services to the Kansas Department on Aging. No other methods were allowed.

Article 46.—CHILD ABUSE AND NEGLECT

30-46-10. Definitions. The purpose of this proposed amendment to Article 46 of the Kansas Administrative Regulations is to bring the regulations into conformity with legislative intent that the Department of Social and Rehabilitation Services and law enforcement officers have the duty to investigate reports of child abuse or neglect.

Currently, the definition of abuse and neglect in the regulations allows an SRS investigation of suspected abuse or neglect only when the suspected perpetrator is a person responsible for the care of the child. Persons with caretaking responsibilities incidental to other purposes for interacting with a child are specifically excluded. The proposed amendment will allow investigation of abuse or neglect whether or not the alleged perpetrator has any responsibility for the care of the child.

Economic Impact: Minimal. A small but unknown number of cases which allege abuse or neglect by persons who are not responsible for the care of a child may currently be screened out. These cases may no longer be screened out for this reason alone and will require staff time to accept and assess the cases, and, in some cases, to notify the perpetrator of a finding and defend the finding against appeal. The fiscal impact will be minimal as the current more restrictive definition has only been effective since January 1, 1997.

Rochelle Chronister
Secretary of Social and
Rehabilitation Services

Doc. No. 019296

State of Kansas

Attorney General

Opinion No. 97-50

Counties and County Officers—General Provisions—County as Corporation; Powers Generally; Home Rule. Richard A. Euson, Sedgwick County Counselor, Wichita, June 18, 1997.

A Kansas county may contract with an out-of-state public agency for the housing of convicted adult misdemeanants and adjudicated juvenile offenders. Any such contract entered by a county in relation to adjudicated juvenile offenders must require the out-of-state public agency to conform with applicable requirements in relation to confinement of juveniles. Cited herein: K.S.A. 12-2901; 19-101; K.S.A. 1996 Supp. 19-101a; K.S.A. 19-1901; K.S.A. 1996 Supp. 38-1602, as amended by 1997 S.B. 69, § 44; K.S.A. 38-1691, as amended by 1997 S.B. 69, § 75; 38-16,111, as amended by 1997 S.B. 69, § 177. CN

Opinion No. 97-51

Cities and Municipalities—Governmental Organization—Consolidation of Operations, Procedures and Functions by a Political Subdivision; Creation of the Shawnee County Department of Corrections and Liability of Sheriff for Operation of County Jail. Sandra L. Jacquot, Shawnee County Counselor, Topeka, June 18, 1997.

K.S.A. 12-3903, as it existed in 1981, authorized the Board of Shawnee County Commissioners to transfer the operation and responsibility for the Shawnee County Jail from the Shawnee County Sheriff to the Shawnee County Department of Corrections without an election. Consequently, the Shawnee County Sheriff is not liable for any negligent or wrongful acts that may arise from the operation of the Shawnee County Jail. Cited herein: K.S.A. 12-3901, 12-3903, 12-3907; 19-1903. MF

Opinion No. 97-52

Public Records, Documents and Information—Records Open to Public—Lists of Names and Addresses Derived from Public Records; Exception to Disclosure. Harold Walker, City Attorney, Kansas City, June 18, 1997.

K.S.A. 45-216(a) requires public records to be open for inspection unless the record falls within one of the exemptions listed in K.S.A. 1996 Supp. 45-221 or other applicable law. K.S.A. 1996 Supp. 45-221(a)(4) allows closure of some records concerning public employees. Under this exception, personnel/employment records identifiable to an individual public employee may be closed, except that names, positions, salaries and lengths of service of public employees are required to be disclosed. Home addresses of public employees may be closed pursuant to K.S.A. 1996 Supp. 45-221(a)(4). Alternatively, a public employee's home address is "information of a personal nature," the public disclosure of which could constitute a clearly unwarranted invasion of personal privacy, thus allowing closure under K.S.A. 1996 Supp. 45-221(a)(30). To the extent their conclusions conflict with those stated herein, Attorney General Opin-

ions No. 86-106 and 90-136 are hereby withdrawn. Cited herein: K.S.A. 21-3914; 45-216; 45-220; K.S.A. 1996 Supp. 45-221, as amended by 1997 H.B. 2105. SP

Opinion No. 97-53

Counties and County Officers—County Commissioners—Powers and Duties; Sale or Disposition of County Property; Public Notice; Election, When. Stan W. Morgan, Riley County Counselor, Manhattan, June 18, 1997.

Riley County should follow the current provisions of K.S.A. 19-211 to sell county property including that authorized for sale by voters in 1984. Pursuant to this statute, a board of county commissioners may exercise its discretion in determining the manner of sale of county property as long as the property is sold publicly to the highest and best bidder as determined by the county. The board should exercise its discretion in determining the specificity of the sale terms and conditions to be included in the notice of sale. K.S.A. 19-211 does not require that the terms and conditions of sale be included on the ballot question. The 1984 notice of special question election in Riley County does not restrict the choice of sale terms allowed by the current provisions of K.S.A. 19-211. Cited herein: K.S.A. 19-211; K.S.A. 1996 Supp. 77-201; L. 1989, Ch. 82, §§ 1, 3; L. 1993, Ch. 198, § 1. DMW

Opinion No. 97-54

State Departments; Public Officers and Employees—Civil Service—Certification of Names of Persons Eligible for Appointment to Vacancies; Authority of Secretary of Administration to Delegate Certain Powers.

State Departments; Public Officers and Employees—Department of Administration; Division of Personnel—Powers and Duties of Secretary of Administration; Authority to Delegate Certain Powers. Representative Melvin J. Neufeld, Chairman, Joint Committee on Administrative Rules and Regulations, 115th District, In-galls, June 18, 1997.

The Secretary of Administration has the authority to delegate to appointing authorities the ability to certify names of eligible persons to the pool from which appointments for certain vacancies are to be made. Cited herein: K.S.A. 1996 Supp. 75-2938; 75-2939; 75-2940; 75-2942; 75-2943; 75-2945; K.S.A. 75-3746; K.S.A. 1996 Supp. 75-3747; L. 1995, Ch. 213, §§ 5, 6, 7, 8, 10; K.A.R. 1-2-14; 1-2-35; 1-6-21. JLM

Opinion No. 97-55

Public Health—Solid and Hazardous Waste; Solid Waste—Cities or Counties Authorized to Provide for Collection and Disposal of Solid Waste; Fees. Joseph P. O'Sullivan, Reno County Counselor, Hutchinson, June 18, 1997.

Fees collected for a solid waste management system authorized by K.S.A. 65-3410 constitute a special fund held in trust for those purposes specifically set forth in K.S.A. 65-3410. Therefore, a county may not use those fees to construct a building for the repair and maintenance of both landfill and road and bridge equipment because

maintenance of road and bridge equipment does not fall within the ambit of K.S.A. 65-3410. Cited herein: K.S.A. 65-3410. DMV

Opinion No. 97-56

Counties and County Officers—Hospitals and Related Facilities—County Hospitals; Hospital Board; Procedure to Elect or Appoint Members; Change in Method of Selection. Daniel W. Krug, Russell County Attorney, Russell.

K.S.A. 19-4605 precludes submitting to the electorate of a county more than once in any one calendar year a question regarding a change in the manner of selection of the members of a hospital board. Cited herein: K.S.A. 19-4601; 19-4605; K.S.A. 1996 Supp. 77-201. RDS

Opinion No. 97-57

Cities of the First Class—Commission Form of Government; Miscellaneous Provisions—Relatives of Mayor and Commissioners Disqualified From Office. Representative L. Candy Ruff, 40th District, Leavenworth, and Robert D. Beall, Leavenworth City Attorney, Leavenworth, June 19, 1997.

The director of the Leavenworth Parks and Recreation Department is not disqualified from holding a city office pursuant to K.S.A. 13-2903 by virtue of his daughter's marriage to the son of a Leavenworth city commissioner or because his grandchild is also the grandchild of the city commissioner. Cited herein: K.S.A. 13-2903. MF

Opinion No. 97-58

Cities and Municipalities—Buildings, Structures and Grounds; Development and Redevelopment of Areas in and Around Cities—Redevelopment Districts; Establishment, Location. Representative Dale A. Swenson, 97th District, Wichita, June 19, 1997.

The legislative intent and language of the Tax Increment Financing Act does not authorize its use to fund a golf course adjoining an undeveloped residential area or street, sewer and water improvements for a housing development in an undeveloped area where neither area meets any of the four preconditions of a redevelopment district. Cited herein: K.S.A. 1996 Supp. 12-1770; 12-1771; 12-1774; L. 1976, Ch. 69; L. 1976, Ch. 52, § 1; L. 1982, Ch. 75, § 7; L. 1991, Ch. 59, § 1; L. 1994, Ch. 63, § 1; L. 1996, Ch. 228, § 2; 1997 H.B. 2179, 2349, 3121. NLU

Opinion No. 97-59

Legislature—State Governmental Ethics—"State Agency" and "Rules and Regulations" Defined; KTEC; Kansas, Inc.

State Boards, Commissions and Authorities—Kansas, Inc.; Membership; Application of State Governmental Ethics Laws.

State Boards, Commissions and Authorities—Kansas Technology Enterprise Corporation; Creation; Board of Directors; Application of State Governmental Ethics Laws. W. Charles Smithson, Legal Counsel, Kansas

Commission on Governmental Standards and Conduct, Topeka, June 19, 1997.

Kansas, Inc. and Kansas Technology Enterprise Corporation constitute boards, commissions, or authorities of the state and are within the definition of "state agency" set forth in K.S.A. 46-224. Cited herein: K.S.A. 46-215; 46-224; 46-253; 46-254; K.S.A. 1996 Supp. 74-8001; 74-8002; 74-8003; 74-8005; 74-8101; 74-8105; 75-2935; K.S.A. 75-3223; 74-8012 (Ensley); 74-18113 (Ensley); 74-8113 (Furse); L. 1995, Ch. 255, §§ 4, 6, 12; L. 1974, Ch. 353, § 10; 1987 House Bill No. 2582. RDS

Opinion No. 97-60

Schools—General Provisions Relating to School Districts—School Residence; Nonresident Pupils; Attendance in School; Agreements. Warren D. Andreas, Legal Counsel, Unified School District No. 465, Winfield, June 19, 1997.

The obligation of providing special education services to an exceptional child is placed upon the unified school district in which the child is a resident and remains with such district despite the fact the child has been admitted to an institution or facility located outside the district. Provisions of subsection (b) of K.S.A. 72-966 stating that when an exceptional child is admitted to an institution or facility located outside the unified school district in which the child is a resident, the unified school district in which the institution or facility is located "must" contract or "shall" contract with the unified school district in which a parent of the child resides for the purpose of providing special education services to the child are directory. Cited herein: K.S.A. 72-961; K.S.A. 1996 Supp. 72-962; K.S.A. 72-966; 72-970; 72-1046. RDS

Opinion No. 97-61

Taxation—Judicial Foreclosure and Sale of Real Estate by County—Joinder of Issues; Trial; Judgment; Redemption Before Day of Sale; Duties of Clerk and Sheriff; Apportionment of Costs, Charges and Expenses. James M. Immel, Special Assistant County Attorney, Allen County, Iola, June 19, 1997.

If property is sold at a tax foreclosure sale for more than the judgment lien and its share of the costs of the proceedings and sale, the excess proceeds shall be paid to the "owner or party entitled thereto" as determined by the court. If, however, such owner or party cannot be located, the court should retain the excess proceeds for a period of one year after which the proceeds should be transferred to the state as abandoned property. Cited herein: K.S.A. 58-3934; 58-3946; K.S.A. 1996 Supp. 58-3950; 58-3952; 58-3953; 58-3956; 58-3957; 79-2801; K.S.A. 79-2803; 79-2805. JLM

Opinion No. 97-62

Automobiles and Other Vehicles—Drivers' Licenses; Uniform Commercial Driver's License Act—Definitions; Road Grader Operator Required to Have a Commercial Driver's License. Morris I. Mercer, Treasurer, Ridgeway Township Board, Carbondale, June 20, 1997.

(continued)

The operator of a township road grader used on the public roadways for transportation-related purposes is required to obtain a commercial driver's license. Cited herein: K.S.A. 8-2,126; 8-2,127; K.S.A. 1996 Supp. 8-2,128; K.S.A. 8-2,132; 49 U.S.C.A. §§ 31301, 31308; 49 C.F.R. §§ 383.3, 383.5. JLM

Carla J. Stovall
Attorney General

Doc. No. 019335

State of Kansas

Attorney General

Notice of Available Grant Funding

Grant funds are available from the federal Victims of Crime Act (VOCA) for federal year October 1, 1997 through September 30, 1998. The purpose of this grant program is to fund public and private nonprofit agencies that provide direct assistance to crime victims. For the purposes of this grant program, a crime victim is a person who has suffered physical, sexual and emotional harm as a result of the commission of a crime. Direct services are defined as efforts that (1) respond to the emotional and physical needs of crime victims; (2) assist primary and secondary victims of crime to stabilize their lives after a victimization; (3) assist victims to understand and participate in the criminal justice system; and (4) provide victims of crime with a measure of safety, such as boarding-up windows, replacing or repairing locks, etc.

Priority shall be given to victims of sexual assault, spousal abuse and child abuse. A minimum of 10 percent of each federal fiscal year grant (30 percent total) will be allocated to each of these categories of crime victims. An additional 10 percent of each VOCA grant will be allocated to victims of violent crime (other than "priority" category victims) who were "previously under served." VOCA crime victim assistance grant funds can be used to enhance or expand services and cannot be used to supplant state and local funds that would otherwise be available for crime victim services.

There is a requirement of a minimum of 20 percent cash or in-kind match of the total VOCA project (VOCA grant award plus match), with the exception of subrecipients that are Native American tribes/organizations located on reservations, whether new or existing, who require a 5 percent cash or in-kind match of the total VOCA project (VOCA grant award plus match).

Applications can be obtained by contacting the Office of the Attorney General, 2nd Floor, Kansas Judicial Center, 301 W. 10th, Topeka, 66612-1597, (913) 296-2215 or 1-800-828-9745.

All grant applications are to be postmarked by Monday, August 4. No applications will be accepted after that date.

Carla J. Stovall
Attorney General

Doc. No. 019314

State of Kansas

Secretary of State

Usury Rate for July

Pursuant to the provisions of K.S.A. 16-207, the maximum effective rate of interest per annum for notes secured by all real estate mortgages and contracts for deed for real estate (except where the note or contract for deed permits adjustment of the interest rate, the term of the loan or the amortization schedule) executed during the period of July 1, 1997 through July 31, 1997, is 9.44 percent.

Ron Thornburgh
Secretary of State

Doc. No. 019300

State of Kansas

State Emergency Response Commission

Notice of Meeting

The Kansas State Emergency Response Commission will meet at 9 a.m. Thursday, July 10, in Room 11, 2800 S.W. Topeka Blvd., Topeka. This special meeting is being held to discuss the proposed Kansas Hazmat Response Program, state regionalization of Hazmat response and program funding. All interested individuals and organizations are invited to attend.

Gary R. Mitchell
Secretary of Health
and Environment

Doc. No. 019318

State of Kansas

Attorney General

Notice of Available Grant Funding

Grant funds are available from the federal Governor's Discretionary Portion of the Safe and Drug-Free Schools and Communities Act for federal year October 1, 1997 through September 30, 1998. The purpose of this grant program is to fund units of state or local government, schools and private not-for-profit organizations that provide drug and violence prevention programs and activities and law enforcement education partnerships.

Priority will be given to programs and activities that serve children and youth who are not normally served by state or local educational agencies or populations that need special services or additional resources, such as pre-schoolers, youth in juvenile detention facilities, runaway or homeless children and youth, pregnant and parenting teenagers, and school dropouts. A minimum of 10 percent of each federal fiscal year grant will be allocated to law enforcement agencies.

Applications can be obtained by contacting the Office of the Attorney General, 2nd Floor, Kansas Judicial Center, 301 S.W. 10th, Topeka, 66612-1597, (913) 296-2215 or 1-800-828-9745.

All grant applications are to be postmarked by Friday, August 8. No applications will be accepted after that date.

Carla J. Stovall
Attorney General

Doc. No. 019315

State of Kansas

Kansas Insurance Department

Notice of Change in Pharmacy Network

Pursuant to K.S.A. 40-2,153, the Commissioner of Insurance is publishing notice that a change has occurred in a pharmacy network in Kansas. Principal Health Care of Kansas City, Inc., has notified the Insurance Department of the addition of Dillons Pharmacy, Pittsburg, Kansas, effective September 15, 1997.

Further information can be obtained by contacting Anne Haught, Kansas Insurance Department, (913) 296-3071.

Kathleen Sebelius
Kansas Insurance Commissioner

Doc. No. 019295

State of Kansas

Kansas Insurance Department

Notice of Hearing on Proposed Administrative Regulations

A public hearing will be conducted at 10:30 a.m. Monday, September 15, in the third floor conference room, Kansas Insurance Department, 420 S.W. 9th, Topeka, to consider the adoption of proposed changes in existing rules and regulations.

The 60-day notice of the public hearing shall constitute a public comment period for the purpose of receiving written public comments on the proposed rules and regulations. All interested parties may submit written comments prior to the hearing to Anne Haught, Kansas Insurance Department, 420 S.W. 9th, Topeka, 66612-1678. All interested parties will be given a reasonable opportunity to present their views orally on the adoption of the proposed regulations during the hearing.

The complete text of the regulations and the economic impact statements may be obtained at the address above. A summary of proposed regulations and their economic impact follows.

K.A.R. 40-10-2. Firefighter's relief associations; requirements for participation; procedure. This proposed regulation describes the requirements for participation in the Firefighter's Relief Funds. In addition, the regulation describes the documents that are to be submitted for participants. There should be a minimal financial impact.

K.A.R. 40-10-10. Firefighter's relief association: permissible disbursements. The proposed regulation describes the permissible disbursement for association expenses allowable to Firefighter's Relief Associations. There should be minimal financial impact.

Any individual with a disability may request accommodation in order to participate in the public hearing and may request the proposed regulations and economic impact statements in an accessible format. Requests for accommodation should be made at least five working days in advance of the hearing by contacting Anne Haught at (913) 296-2188.

Kathleen Sebelius
Kansas Insurance Commissioner

Doc. No. 019306

State of Kansas

University of Kansas Medical Center

Notice to Bidders

Sealed bids for the item listed below will be received by the University of Kansas Medical Center, Purchasing Department, 3901 Rainbow Blvd., Kansas City, KS 66160-7162, until 2 p.m. on the date indicated and then will be publicly opened. Interested bidders may call Peggy Davis at (913) 588-1115 for additional information.

Monday, July 21, 1997

728005

Holter monitor scanning system

Barbara Lockhart
Purchasing Director

Doc. No. 019321

State of Kansas

Kansas State University

Notice to Bidders

Sealed bids for the item listed below will be received by the Kansas State University Purchasing Office, Manhattan, until 2 p.m. local time on the date indicated and then will be publicly opened. Interested bidders may call (913) 532-6214 or fax (913) 532-5632 for additional information.

Monday, July 14, 1997

#70350

High temperature vacuum furnace

William H. Sesler
Director of Purchasing

Doc. No. 019332

State of Kansas

Kansas Judicial Council

Notice of Meeting

The Kansas Judicial Council and its advisory committees will meet according to the following schedule at the Kansas Judicial Center, 301 W. 10th, Topeka:

Date	Committee	Time	Location
July 11	Criminal Law	9:30 a.m.	Room 259
July 11	PIK-Criminal	9:30 a.m.	Supreme Court Courtroom
July 23	Civil Code-Lien Law	9:30 a.m.	Room 259
July 25	Municipal Court Manual	9:30 a.m.	Room 259
Aug. 1	Civil Code-Chapter 61	9:30 a.m.	Room 259
Aug. 29	Criminal Law	9:30 a.m.	Room 259

Justice Tyler C. Lockett
Chair

Doc. No. 019326

State of Kansas

State Corporation Commission

Notice of Motor Carrier Hearings

The following motor carriers have filed various applications and are scheduled for hearing at 9:30 a.m. July 22 before the commission at its offices, 1500 S.W. Arrowhead Road, Topeka, as indicated below. All applications listed herein are for statewide authority, unless otherwise stated. This list does not include cases which have been continued from earlier assigned hearing dates for which parties of record have received notice.

Requests to inspect and copy the notices provided to the parties and questions in regard to these hearings should be addressed to the State Corporation Commission, Transportation Division, 1500 S.W. Arrowhead Road, Topeka, 66604-4027, (913) 271-3225 or 271-3151. The presiding officer for these matters is Dan Riley, Assistant General Counsel, (913) 271-3159. Anyone needing special accommodations should give notice to the commission 10 days prior to the scheduled hearing date.

Attention should be directed to Kansas Administrative Regulation 82-1-228, "Rules of Practice and Procedure Before the Commission."

Application for Certificate of Public Service:

Denny Duncan, dba Duncan Express, 1104 13th St., Apt. B, Dodge City, KS 67801; MC ID No. 152652; General commodities (except household goods and hazardous materials).

Harold W. and Shirley Daniels, dba Daniels Trucking, 4281 S.W. 10th, El Dorado, KS 67042; MC ID No. 154107; General commodities (except household goods and hazardous materials).

Allen R. Eaton, dba Eaton's Wrecker Service, 616 Lincoln St., Sabetha, KS 66534; MC ID No. 154106; Wrecked, disabled, repossessed and replacement vehicles.

Ernest Wayne Jorgensen, dba Wayne's Repair, 222 N. College, Scott City, KS 67871; MC ID No. 154105; Wrecked, disabled, repossessed and replacement vehicles.

Randell L. Pfaff, dba GR Trucking, 600 Grant, Russell, KS 67665; MC ID No. 154108; General commodities (except household goods and hazardous materials).

Kenny Burkhart, dba Burkhart Trucking; 3202 N. Ave. A, Dodge City, KS 67801; Clyde Christey, Attorney; General commodities (except household goods and hazardous commodities).

David A. Trowbridge, Sr., dba D & L Mobile Home Movers, 1047 N. 635 Road, Baldwin City, KS 66006; MC ID No. 154110; Clyde Christey, Attorney; General commodities (except household goods and hazardous commodities).

Application for Extension of Certificate of Public Service:

Fort Hays Trucking, Inc., 1303 Felten Drive, Hays, KS 67601; MC ID No. 144413; Clyde Christy, Attorney; General commodities (except household goods).

RC Trucking, L.L.C., 190 Blackbird Road S.W., Gridley, KS 66852; MC ID No. 152637, to: R.C. Trucking, Inc., 190 Blackbird Road S.W., Gridley, KS 66852; William

Barker, Attorney; General commodities (except hazardous materials and household goods).

Application for Transfer of Certificate of Public Service:

Greg Cahoj and Albin Dean Cahoj, dba Cahoj Earthmoving and Trucking, Route 2, Box 147, Atwood, KS 67730; MC ID No. 120468, to: Cahoj Earthmoving, Inc., Route 2, Box 147, Atwood, KS 67730; Livestock and grain.

Application for Abandonment of Certificate of Public Service:

Donald E. Moberly, 515 W. Spencer, St. Francis, KS 67756; MC ID No. 152951.

Don Carlile
Administrator
Transportation Division

Doc. No. 019325

State of Kansas

Office of the Governor

Notice Pertaining to Effective Date of House Substitute for Senate Bill No. 140

Notice is hereby given that the State Finance Council adopted the resolution set forth below at its meeting on June 18, 1997. Because the Legislature did not expressly characterize this Finance Council function as a matter of legislative delegation, pursuant to Subsection (c) of K.S.A. 75-3711, I also have independently exercised the functions specified for the Finance Council in Section 107 and applied the guidelines of K.S.A. 75-3711c.

State Finance Council Resolution

WHEREAS, the 1997 Legislature passed House Substitute for Senate Bill No. 140 and it was signed by the Governor;

WHEREAS, Section 107 of 1997 House Substitute for Senate Bill No. 140 provides that the act shall take effect and be in force from and after its publication in the statute book and publication in the Kansas Register of a resolution by the State Finance Council which states that such act shall take effect upon publication of such resolution;

WHEREAS, adoption of the above-cited resolution is properly characterized as a matter of legislative delegation to the State Finance Council;

WHEREAS, the need for the adoption of such resolution is characterized as arising from an unascertainable effect of a foreseeable occurrence and delay until the next legislative session on this matter would be contrary to Section 107;

WHEREAS, the action of adoption of this resolution is not contrary to known legislative intent in that such action was specifically provided for in Section 107;

THEREFORE BE IT RESOLVED, by the State Finance Council, by the Governor and a majority of the legislative members, that this resolution is adopted and that House Substitute for Senate Bill 140 shall take effect upon the publication in the Kansas Register of this resolution and publication of the act in the statute book.

Dated June 18, 1997.

Bill Graves
Governor

Doc. No. 019308

State of Kansas

Department of Administration
Division of Purchases

Notice to Bidders

Sealed bids for the following items will be received by the Director of Purchases, Landon State Office Building, 900 S.W. Jackson, Room 102, Topeka, until 2 p.m. the date indicated and then will be publicly opened. Interested bidders may call (913) 296-2377 for additional information:

Monday, July 14, 1997

32565

Department of Transportation—Portland cement in bags, various locations

32577

University of Kansas—Safe Ride Program

Wednesday, July 16, 1997

32574

Kansas State University—Natural gas services, Hays

6266

Kansas State University—Hi-Pro soybean meal

6273

University of Kansas—Paper, printing and binding: Haunted Kansas

6274

University of Kansas—Paper, printing and binding: The Supreme Court and Juvenile Justice

6275

University of Kansas—Paper, printing and binding: Many Wests

6276

University of Kansas—Paper, printing and binding: MacArthur's Jungle War

6278

University of Kansas—Paper, printing and binding: Facing My Lai

6279

University of Kansas—Paper, printing and binding: The Dark Side of the Left: Illiberal Egalitarianism in America

6280

University of Kansas—Paper, printing and binding: Justifying Judgement

6281

University of Kansas—Paper, printing and binding: Lincoln's Shoulder

Thursday, July 17, 1997

32576

Kansas State University—Miscellaneous groceries

6258

State Historical Society—Furnish and install carpet and tile

6259

Kansas State University—Furnish and install aluminum doors

Friday, July 18, 1997

32569

Statewide—Temporary employment services

32570

State Board of Regents—IBM workstations, servers, upgrades and accessories

6267

Kansas State University—Rooftop reciprocating chillers

6268

Kansas State University—Metal nosing

6270

Hutchinson Correctional Facility—Building materials

Monday, July 21, 1997

32568

Adjutant General's Department—Inspection and testing of fire alarm system, Wichita

6269

Department of Transportation—All labor and materials for removal and disposal of buildings, Kansas City

Tuesday, July 22, 1997

A-8247

University of Kansas—Reroof, Summerfield Hall

Wednesday, July 23, 1997

A-8100

University of Kansas Medical Center—Emergency room drive restoration

A-8173

University of Kansas—Spencer Museum of Art

Friday, July 25, 1997

A-8314

University of Kansas—Boiler replacement, Bioscience Research Facility

6251

Osawatomie State Hospital—Furnish and install telecommunications PDS

Thursday, July 31, 1997

32575

Kansas State University—Elevator maintenance service

Request for Proposals

Wednesday, July 30, 1997

32564

Unemployment insurance call centers for the Department of Human Resources

Wednesday, August 20, 1997

32566

200-bed privately developed and operated prison for the Department of Corrections

John T. Houlihan
Director of Purchases

Doc. No. 019331

State of Kansas

Kansas Water Authority

Notice of Meeting

The Kansas Water Authority will conduct its quarterly meeting July 10-11 at the Cloud County Community College, 2221 Campus Drive, Concordia. The Basin Advisory Committee chairpersons will meet at 5 p.m. July 10 in the Main Building, Room 301. The Conservation and Marketing and Water Quality committees will meet at 9 a.m. July 10 in the Main Building. The Planning and Management Committee and Education Committee convene at 1 p.m. July 10 at the same location.

The full Authority will convene at 8:30 a.m. July 11 in the Conference Center, located in the Community Education Building across from the campus.

For additional information, contact John Gottschamer, Public Information Coordinator, at (913) 296-0866, e-mail: jgottsch@fog.kwo.state.ks.us.

If accommodations are needed for persons with disabilities, please notify the Kansas Water Office at 109 S.W. 9th, Suite 300, Topeka, 66612-1249, (913) 296-3185 or (913) 296-6604 (TTY), at least two days prior to the meeting.

Kent Lamb
Chairman

Doc. No. 019307

State of Kansas

Department of Health
and Environment

Request for Comments

The Kansas Department of Health and Environment is soliciting comments regarding a proposed air quality construction permit. The City of Iola has applied for an air quality construction permit in accordance with the provisions of K.A.R. 28-19-300 to install a new electrical generating unit. Emissions of nitrogen oxides, carbon monoxide and volatile organic compounds were evaluated during the permit review process.

The City of Iola owns and operates the stationary source located at SW ¼ Section 27, Township 24S, Range 18E, Iola, at which the generator is to be installed.

A copy of the proposed permit, permit application, all supporting documentation and all information relied upon during review of the permit application is available for public inspection during normal business hours at the KDHE, Bureau of Air and Radiation, Building 283, Forbes Field, Topeka, and at the KDHE southeast district office, 1500 W. 7th, Chanute. To obtain or review the proposed permit and supporting documentation, contact Shawn Howell, (913) 296-1993, at the KDHE central office, or Lynn Ranabarger, (316) 431-2390, at the KDHE southeast district office. The standard departmental cost will be assessed for any copies requested.

Direct written comments or questions regarding the proposed permit to Shawn Howell, KDHE, Bureau of Air and Radiation, Building 283, Forbes Field, Topeka, 66620. Written comments must be received by the close of business August 4 in order to be considered in formulating a final permit decision.

A person may request a public hearing be conducted on the proposed permit. The request for a public hearing shall be in writing and set forth the basis for the request. The written request must be submitted to Connie Carreno, Bureau of Air and Radiation, not later than the close of business August 4 in order for the Secretary of Health and Environment to consider the request.

Gary R. Mitchell
Secretary of Health
and Environment

Doc. No. 019316

State of Kansas

Department of Health
and Environment

Request for Comments

The Kansas Department of Health and Environment is soliciting comments regarding a proposed air quality operating permit. Moscow Agri-Industries has applied for a Class II operating permit in accordance with the provisions of K.A.R. 28-19-540. Emissions of nitrogen oxides (NOx) and carbon monoxides (CO) were evaluated during the permit review process. The purpose of a Class II permit is to limit the potential-to-emit for these pollutants to below major source thresholds.

Moscow Agri-Industries, Hugoton, owns and operates an alfalfa pellet mill with three generator engines used for backup energy located on Highway 56 East, Moscow.

A copy of the proposed permit, permit application, all supporting documentation and all information relied upon during the permit application review process is available for public review during normal business hours at the KDHE, Bureau of Air and Radiation, Building 283, Forbes Field, Topeka, and at the KDHE southwest district office, 302 W. McArtor Road, Dodge City. To obtain or review the proposed permit and supporting documentation, contact Cheryl Evans, (913) 296-6438, at the KDHE central office, or Wayne Neese, (316) 225-0596, at the KDHE southwest district office. The standard departmental cost will be assessed for any copies requested.

Direct written comments or questions regarding the proposed permit to Cheryl Evans, KDHE, Bureau of Air and Radiation, Building 283, Forbes Field, Topeka, 66620. Written comments must be received by the close of business August 4 in order to be considered in formulating a final permit decision.

A person may request a public hearing be conducted on the proposed permit. The request for a public hearing shall be in writing and set forth the basis for the request. The written request must be submitted to Connie Carreno, Bureau of Air and Radiation, not later than the close of business August 4 in order for the Secretary of Health and Environment to consider the request.

Gary R. Mitchell
Secretary of Health
and Environment

Doc. No. 019329

State of Kansas

Department of Health
and Environment

Request for Comments

The Kansas Department of Health and Environment is soliciting comments regarding issuance of authorizations to operate under the general Class I air quality operating permit for natural gas compressor stations. Authorizations to operate under the general Class I operating permit have been issued in accordance with the provisions of K.A.R. 28-19-400 *et seq.*

A copy of each permit application, authorization and all supporting nonconfidential documentation is available for public review during normal business hours at the KDHE, Bureau of Air and Radiation, Building 283, Forbes Field, Topeka. Information also is available at the KDHE district office indicated for each facility. To obtain or review the permit, authorization and supporting documentation, contact Connie Carreno, (913) 296-6422, at the KDHE central office, or the indicated district representative. The standard departmental cost will be assessed for any copies requested.

Direct written comments or questions regarding an authorization to Connie Carreno, Bureau of Air and Radiation, KDHE, Building 283, Forbes Field, Topeka, 66620.

A list of all major sources within the state authorized to operate under the terms of the general Class I operating permit will be maintained at the Topeka KDHE offices.

Authorizations issued during the week of
June 16, 1997:

KDHE District Rep.: Wayne Neese, (316) 225-3731
Rep. Location: Southwest District Office, Dodge City

Company:**Compressor Station:****Source ID No.:****Location:**

Pan Energy
Cognac Booster Station
0670047
S36, T28S, R37W, Grant County

Pan Energy
Light Booster Station
1750018
S2, T35S, R32W, Seward County

Pan Energy
Meade Booster Station
1190016
S12, T32S, R29W, Meade County

Pan Energy
Plains Booster Station
1190009
S19, T32S, R30W, Meade County

Pan Energy
S. Elkhart Station
1290011
S7, T35S, R42W, Morton County

Pan Energy
S. Woods Booster Station
1890038
S16, T34S, R35W, Stevens County

Pan Energy
Ulysses Booster Station
0670026
S24, T29S, R36W, Grant County

Pan Energy
Wellsford Booster Station
0970019
S25, T27S, R16W, Kiowa County

Gary R. Mitchell
Secretary of Health
and Environment

Doc. No. 019319

State of Kansas

Department of Health
and Environment

Request for Comments

The Kansas Department of Health and Environment is soliciting comments regarding a proposed air quality operating permit. The City of Ellinwood has applied for a Class II operating permit in accordance with the provisions of K.A.R. 28-19-540. Emissions of oxides of nitrogen, carbon monoxide and sulfur dioxide were evaluated during the permit review process. The purpose of a Class II permit is to limit the potential-to-emit for these pollutants to below major source thresholds.

The City of Ellinwood owns and operates a municipal power plant located at 201 W. 1st, Ellinwood.

A copy of the proposed permit, permit application, all supporting documentation and all information relied upon during the permit application review process is available for public review during normal business hours at the KDHE, Bureau of Air and Radiation, Building 283, Forbes Field, Topeka, and at the KDHE northwest district office, 2301 E. 13th, Hays. To obtain or review the proposed permit and supporting documentation, contact Rick Bolfig, (913) 296-1576, at the KDHE central office, or Richard Robinson, (913) 625-5663, at the KDHE northwest district office. The standard departmental cost will be assessed for any copies requested.

Direct written comments or questions regarding the proposed permit to Rick Bolfig, KDHE, Bureau of Air and Radiation, Building 283, Forbes Field, Topeka, 66620. Written comments must be received by the close of business August 4 in order to be considered in formulating a final permit decision.

A person may request a public hearing be conducted on the proposed permit. The request for a public hearing shall be in writing and set forth the basis for the request. The written request must be submitted to Connie Carreno, Bureau of Air and Radiation, not later than the close of business August 4 in order for the Secretary of Health and Environment to consider the request.

Gary R. Mitchell
Secretary of Health
and Environment

Doc. No. 019327

State of Kansas

Pooled Money Investment Board**Notice of Investment Rates**

The following rates are published in accordance with K.S.A. 1996 Supp. 75-4210. These rates and their uses are defined in K.S.A. 1996 Supp. 12-1675(b)(c)(d), and K.S.A. 1996 Supp. 75-4201(l) and 75-4209(a)(1)(B).

Effective 6-30-97 through 7-6-97

Term	Rate
1-89 days	5.48%
3 months	5.41%
6 months	5.62%
9 months	5.67%
12 months	5.79%
18 months	5.96%
24 months	6.05%

William E. Lewis
Chairman

Doc. No. 019297

State of Kansas

**Department of Health
and Environment****Notice of Hearing**

The Kansas Department of Health and Environment has prepared a proposed Kansas water pollution control permit, A-UAPN-C001, for Pawnee Beef Builders, Inc., located near Larned. Pawnee Beef Builders operates an existing confined animal feeding operation for 30,000 head of beef cattle. The proposed permit for Pawnee Beef Builders was placed on Public Notice No. KS-AG-97-55 dated February 27-March 28, 1997. Significant public response to this notice was expressed concerning reissuance of the permit; therefore, a public hearing has been scheduled in conformance with K.A.R. 28-16-61.

The hearing on KDHE's intention to issue the proposed permit will be at 7 p.m. Wednesday, August 6, at the Larned City Offices, 417 Broadway, Larned.

Copies of the application, draft permit and other pertinent documents may be requested by contacting Dorothy Geisler, Kansas Department of Health and Environment, Bureau of Water, Industrial Programs Section, Forbes Field, Building 283, Topeka, 66620, (913) 296-5545 or fax (913) 296-5509. Appropriate copying charges will be assessed for each request.

Persons may comment on the proposed permit at the public hearing or may submit written statements to the above address by August 6 or such later time, if any, established by the hearing officer at the public hearing.

Any individual with a disability may request accommodation in order to participate in the public hearing and may request the proposed permit in an accessible format. Requests for accommodation should be made at least five working days in advance of the hearing by contacting the KDHE at the above address.

The Secretary of Health and Environment will make a final permit decision after consideration of all requirements of state statutes and regulations and comments re-

ceived during the public notice and public hearing processes.

Gary R. Mitchell
Secretary of Health
and Environment

Doc. No. 019317

State of Kansas

**Department of Health
and Environment****Request for Comments**

The Kansas Department of Health and Environment is soliciting comments regarding a proposed air quality operating permit. Hutchinson Correctional Facility-Central Unit has applied for a Class II operating permit in accordance with the provisions of K.A.R. 28-19-540. Emissions of sulfur oxides (SOx) were evaluated during the permit review process. The purpose of a Class II permit is to limit the potential-to-emit for these pollutants to below major source thresholds.

Hutchinson Correctional Facility-Central Unit owns and operates a series of boilers and a generator for its maximum security facility located at 500 S. Reformatory, Hutchinson.

A copy of the proposed permit, permit application, all supporting documentation and all information relied upon during the permit application review process is available for public review during normal business hours at the KDHE, Bureau of Air and Radiation, Building 283, Forbes Field, Topeka, and at the KDHE south central district office, 130 S. Market, 6th Floor, Wichita. To obtain or review the proposed permit and supporting documentation, contact Cheryl Evans, (913) 296-6438, at the KDHE central office, or David Butler, (316) 337-6020, at the KDHE south central district office. The standard departmental cost will be assessed for any copies requested.

Direct written comments or questions regarding the proposed permit to Cheryl Evans, KDHE, Bureau of Air and Radiation, Building 283, Forbes Field, Topeka, 66620. Written comments must be received by the close of business August 4 in order to be considered in formulating a final permit decision.

A person may request a public hearing be conducted on the proposed permit. The request for a public hearing shall be in writing and set forth the basis for the request. The written request must be submitted to Connie Carreno, Bureau of Air and Radiation, not later than the close of business August 4 in order for the Secretary of Health and Environment to consider the request.

Gary R. Mitchell
Secretary of Health
and Environment

Doc. No. 019330

State of Kansas

State Records Board

Notice of Meeting

The Kansas State Records Board will meet at 10 a.m. Thursday, July 10, at the Kansas History Center, 6425 S.W. 6th Ave., Topeka. The board will consider requests from state agencies submitting proposals for retention and disposition of noncurrent government records. In addition, general administrative matters and other business will be discussed.

Patricia A. Michaelis
State Archivist

Doc. No. 019309

State of Kansas

Department of Health
and Environment

Request for Comments

The Kansas Department of Health and Environment is soliciting comments regarding a proposed air quality operating permit. The City of Lincoln has applied for a Class II operating permit in accordance with the provisions of K.A.R. 28-19-540. Emissions of oxides of nitrogen, carbon monoxide and sulfur dioxide were evaluated during the permit review process. The purpose of a Class II permit is to limit the potential-to-emit for these pollutants to below major source thresholds.

The City of Lincoln owns and operates a municipal power plant located at 405 W. South St., Lincoln.

A copy of the proposed permit, permit application, all supporting documentation and all information relied upon during the permit application review process is available for public review during normal business hours at the KDHE, Bureau of Air and Radiation, Building 283, Forbes Field, Topeka, and at the KDHE north central district office, 2501 Market Place, Suite D, Salina. To obtain or review the proposed permit and supporting documentation, contact Rick Bolfig, (913) 296-1576, at the KDHE central office, or Beth Rowlands, (913) 827-9639, at the KDHE north central district office. The standard departmental cost will be assessed for any copies requested.

Direct written comments or questions regarding the proposed permit to Rick Bolfig, KDHE, Bureau of Air and Radiation, Building 283, Forbes Field, Topeka, 66620. Written comments must be received by the close of business August 4 in order to be considered in formulating a final permit decision.

A person may request a public hearing be conducted on the proposed permit. The request for a public hearing shall be in writing and set forth the basis for the request. The written request must be submitted to Connie Carreno, Bureau of Air and Radiation, not later than the close of business August 4 in order for the Secretary of Health and Environment to consider the request.

Gary R. Mitchell
Secretary of Health
and Environment

Doc. No. 019328

State of Kansas

Department of Health
and EnvironmentNotice Concerning Municipal Solid Waste
Landfill Permit

The Kansas Department of Health and Environment has received and reviewed a municipal solid waste landfill permit application from USA Waste Services Kansas Landfill, Inc. to own and operate the Oakgrove Landfill. The facility is located at East 700 Ave. between North 250th St. and Nelson St. southwest of Arcadia, Kansas.

The site area is approximately 630 acres with approximately 288 acres used for disposal. This landfill is an existing landfill which has been in operation since July 7, 1994. The site was recently purchased from Deffenbaugh Industries, Inc., which previously owned and operated the landfill. KDHE is providing public notice of its intent to issue a municipal solid waste landfill permit to USA Waste Services Kansas Landfill, Inc.

A copy of the administrative record, which includes the draft permit, permit application and all information regarding this permit action, is available for public review from July 7-August 6 during normal business hours, 8 a.m. to 4:30 p.m. Monday through Friday, at the following locations:

Kansas Department of Health and Environment
Bureau of Waste Management
Forbes Field, Building 740
Topeka, 66620
Contact: Phil Rosewicz
(913) 296-1594

Kansas Department of Health and Environment
Surface Mining Section
4033 N. Parkview Drive
Frontenac, 66763
Contact: Murray Balk
(316) 231-8540

Anyone wishing to comment on the draft permit or permit application should submit written statements postmarked not later than August 6 to Phil Rosewicz (KDHE).

After consideration of all comments received, the director of the Division of the Environment will make a final permit decision. Notice of the decision will be given to the applicant, all persons who submitted written comments during the comment period and those who requested notice of the final permit decision.

Gary R. Mitchell
Secretary of Health
and Environment

Doc. No. 019333

State of Kansas

Department of Health and Environment

Notice Concerning Kansas Water Pollution Control Permits

In accordance with state regulations 28-16-57 through 63, 28-18-1 through 4, 28-16-150 through 154, 28-46-7, and the authority vested with the state by the administrator of the U.S. Environmental Protection Agency, draft permits have been prepared for discharges to the waters of the United States and the State of Kansas for the class of dischargers described below. The determinations for permit content are based on staff review, applying the appropriate standards, regulations and effluent limitations of the State of Kansas and the EPA, and when issued will result in a state water pollution control permit and national pollutant discharge elimination system authorization subject to certain conditions.

Public Notice No. KS-AG-97-152/154

Name and Address of Applicant	Legal Description	Receiving Water
Michael T. Wilson 419 1000 Ave. Carlton, KS 67448	NE/4, Sec. 21, T15S, R1E, Dickinson County	Smoky Hill River Basin

Kansas Permit No. A-SHDK-S017

This is a new facility for 750 head of swine and 450 head of cattle (525 animal units).

Wastewater Control Facilities: Wastewater will be impounded for subsequent application to agricultural land for beneficial use. Wastewater storage capacity is provided which meets or exceeds KDHE minimum requirements.

Compliance Schedule: None, existing controls adequate.

Name and Address of Applicant	Legal Description	Receiving Water
Kent Condray KC Pork, Inc. 471 Bismark Clifton, KS 66937	NW/4 & SE/4, Sec. 15, NE/4, Sec. 21, & SW/4, Sec. 22, T5S, R1E, Washington County	Lower Republican River Basin

Kansas Permit No. A-LRWS-H002 Federal Permit No. KS-0085750

This is an existing expansion facility for 11,700 head (4,680 animal units) of swine.

Wastewater Control Facilities: Wastewater will be impounded for subsequent application to agricultural land for beneficial use. Wastewater storage capacity is provided which meets or exceeds KDHE minimum requirements.

Compliance Schedule: A livestock waste management plan for the facility shall be developed. The plan shall cover, but not be limited to, the following items: handling and disposal equipment for both solid and liquid wastes, land application practices used to protect against runoff and leaching, waste application rates based on crop nutrient utilization, and identification of adequate land areas for application of all wastes. Detailed guidance and requirements will be provided by the department. A plan shall be submitted to the department within six months following receipt of detailed requirements. The approved plan will become part of this permit.

The waste management plan developed by the designer and approved by the department shall be adhered to as a condition of this permit. The plan calls for nutrient analysis of both liquids and solids with applications to meet crop nutrient needs. If wastes are not analyzed for nutrient content, wastewater shall be applied at not greater than 1.0 acre inch per acre per year.

Name and Address of Applicant	Legal Description	Receiving Water
Steven K. Ohlde Ohlde's Dairy 888 Quivira Road Linn, KS 66953	NW/4, Sec. 24, T4S, R3E, Washington County	Big Blue River Basin

Kansas Permit No. A-BBWS-D002 Federal Permit No. KS-0093947

This is an existing facility for 750 head (1,050 animal units) of dairy cows.

Wastewater Control Facilities: Wastewater will be impounded for subsequent application to agricultural land for beneficial use. Wastewater storage capacity is provided which meets or exceeds KDHE minimum requirements.

Compliance Schedule: A livestock waste management plan for the facility shall be developed. The plan shall cover, but not be limited to, the following items: handling and disposal equipment for both solid and liquid wastes, land application practices used to protect against runoff and leaching, waste application rates based on crop nutrient utilization, and identification of adequate land areas for application of all wastes. Detailed guidance and requirements will be provided by the department. A plan shall be submitted to the department within six months following receipt of detailed requirements. The approved plan will become part of this permit.

Public Notice No. KS-97-101/107

Name and Address of Applicant	Waterway	Type of Discharge
Midwest Minerals, Inc. Chetopa Quarry #40 P. O. Box 412 Pittsburg, KS 66762	Neosho River via Town Creek via unnamed tributary	Mine dewatering and stormwater

Kansas Permit No. I-NE13-PO04 Federal Permit No. KS0088838

Location: NW/4, Section 6, Township 35S, Range 21E, Labette County

Facility Description: The proposed action is to reissue an existing permit for operation of the wastewater treatment system at an existing quarry. This is a limestone quarrying operation with no washing. The only discharge is quarry pit dewatering and uncontaminated stormwater runoff. The permit requirements are pursuant to Kansas surface water quality standards, K.A.R. 28-16-28(b-f), and federal surface water criteria.

Name and Address of Applicant	Waterway	Type of Discharge
Midwest Minerals, Inc. Erie Quarry #7 P. O. Box 412 Pittsburg, KS 66762	Neosho River via Rock Creek via unnamed tributary	Mine dewatering and stormwater

Kansas Permit No. I-NE25-PO01 Federal Permit No. KS0088889

Location: SE/4, Section 9, Township 29S, Range 19E, Neosho County

Facility Description: The proposed action is to reissue an existing permit for operation of the wastewater treatment system at an existing quarry. This is a limestone quarrying operation with no washing. The only discharge is quarry pit dewatering and uncontaminated stormwater runoff. The permit requirements are pursuant to Kansas surface water quality standards, K.A.R. 28-16-28(b-f), and federal surface water criteria.

Name and Address of Applicant	Waterway	Type of Discharge
Midwest Minerals, Inc. Cherryvale Quarry #6 P. O. Box 412 Pittsburg, KS 66762	Verdigris River via Drum Creek via unnamed tributary	Mine dewatering and stormwater

Kansas Permit No. I-VE07-PO02 Federal Permit No. KS0082074

Location: NW/4, Section 22, Township 31S, Range 17E, Montgomery County

Facility Description: The proposed action is to reissue an existing permit for operation of the wastewater treatment system at an existing quarry. This is a limestone quarrying operation with no washing. The only discharge is quarry pit dewatering and uncontaminated stormwater runoff. The permit requirements are pursuant to Kansas

surface water quality standards, K.A.R. 28-16-28(b-f), and federal surface water criteria.

Name and Address of Applicant	Waterway	Type of Discharge
Midwest Minerals, Inc. Neodesha Quarry #27 P. O. Box 412 Pittsburg, KS 66762	Verdigris River via Elk River via Sycamore Creek via unnamed tributary	Mine dewatering and stormwater
Kansas Permit No. I-VE29-PO03		Federal Permit No. KS0088871

Location: NW¼, Section 27, Township 30S, Range 15E, Wilson County
 Facility Description: The proposed action is to reissue an existing permit for operation of the wastewater treatment system at an existing quarry. This is a limestone quarrying operation with no washing. The only discharge is quarry pit dewatering and uncontaminated stormwater runoff. The permit requirements are pursuant to Kansas water quality standards, K.A.R. 28-16-28(b-f), and federal surface water criteria.

Name and Address of Applicant	Waterway	Type of Discharge
Midwest Minerals, Inc. Pittsburg Quarry #5 P. O. Box 412 Pittsburg, KS 66762	Neosho River via Lightning Creek via Limestone Creek via unnamed tributary	Mine dewatering and stormwater
Kansas Permit No. I-NE57-PO11		Federal Permit No. KS0088862

Location: NE¼, Section 30, Township 30S, Range 24E, Crawford County
 Facility Description: The proposed action is to reissue an existing permit for operation of the wastewater treatment system at an existing quarry. This is a limestone quarrying operation with no washing. The only discharge is quarry pit dewatering and uncontaminated stormwater runoff. The permit requirements are pursuant to Kansas surface water quality standards, K.A.R. 28-16-28(b-f), and federal surface water criteria.

Name and Address of Applicant	Waterway	Type of Discharge
Nelson Quarries, Inc. Cherryvale Quarry P. O. Box 124 LaHarpe, KS 66751	Verdigris River via Drum Creek via unnamed tributary	Mine dewatering washwater and stormwater
Kansas Permit No. I-VE07-PO03		Federal Permit No. KS0093238

Location: N½, Section 15, Township 31S, Range 17E, Montgomery County
 Facility Description: The proposed action is to reissue an existing permit for operation of the wastewater treatment system at an existing quarry. This is a limestone quarrying operation with some washing. All discharges, including any washwater, are treated in a settling pond before being released. Since most of the washwater is recycled, the pond will rarely discharge. The effluent limitations are pursuant to Kansas surface water quality standards, K.A.R. 28-16-28(b-f), and federal surface water criteria.

Name and Address of Applicant	Waterway	Type of Discharge
Walker Stone Co., Inc. P W Quarry P. O. Box 563 Chapman, KS 67431	Smoky Hill River via unnamed tributaries	Mine dewatering and stormwater
Kansas Permit No. I-SH04-PO03		Federal Permit No. KS0081311

Location: SE¼, Section 3, Township 12S, Range 4E, Dickinson County
 Facility Description: The proposed action is to reissue an existing permit for operation of the wastewater treatment system at an existing quarry. This is a limestone quarrying operation with no washing. This quarry site has no natural drainage course. Stormwater runoff is contained in the quarry impoundment and is relocated according to mining operations within the impoundment. The permit requirements are pursuant to Kansas surface water quality standards, K.A.R. 28-16-28(b-f), and federal surface water criteria.

Public Notice No. KS-ND-97-037/039

Name and Address of Applicant	Legal Location	Type of Discharge
Comanche Constr. Inc. Hydrodemolition Proj. P. O. Box 14158 Shawnee Mission, KS 66285-4185	NW¼, S26, T18S, R22E, Miami County	Nonoverflowing
Kansas Permit No. I-MC30-NP01		

Project Location: Bridge No. 169-061-053 at Hwy. 169/Hwy. 7 near Osawatomie

Facility Description: The proposed action is to issue a new permit for operation of a new wastewater treatment facility. This is a hydro-demolition project. The hydrodemolition water is directed to two settling basins. As and when required, wastewater from the settling basins will be transported to a wastewater treatment plant for treatment and disposal.

Name and Address of Applicant	Legal Location	Type of Discharge
Grantville KOA Kampground Leota Coon, Trustee 3366 KOA Road Grantville, KS 66429	SW¼, S8, T11S, R17E, Jefferson County	Nonoverflowing
Kansas Permit No. C-KS86-NO01		

Facility Description: The proposed action is to reissue an existing permit for operation of an existing wastewater treatment facility. The facility consists of a two-cell lagoon treating domestic wastewater. The proposed permit contains a schedule of compliance for the owner to obtain the services of a KDHE certified operator.

Name and Address of Applicant	Legal Location	Type of Discharge
M & M Mobile Home Court Mary Ashby P. O. Box 317 Chapman, KS 67431	SE¼, S19, T12S, R4E, Dickinson County	Nonoverflowing
Kansas Permit No. C-SH04-NO02		

Facility Description: The proposed action is to reissue an existing permit for operation of an existing wastewater treatment facility. The facility consists of a three-cell lagoon treating domestic wastewater. The proposed permit contains a schedule of compliance for the owner to obtain the services of a KDHE certified operator.

Public Notice No. KS-PT-97-007

Name and Address of Applicant	Receiving Facility	Type of Discharge
Great Plains Mfg., Inc. 1525 E. North St. Salina, KS 67402-5060	Lucas WWTF	Process water
Kansas Permit No. P-SA08-OO01		

Facility Location: 240 S. Greeley, Lucas, Kansas
 Facility Description: The proposed action is to re-issue an existing pre-treatment permit for the above named facility. This facility manufactures various types of spray and landscape equipment. Steel parts are welded, phosphated and painted to produce the final product. The phosphating operation is a pressure spray gun system. The permit limits are pursuant to state and federal pretreatment requirements.

Public Notice No. KS-EG-97-014

In accordance with K.A.R. 28-46-7 and the authority vested with the state by the administrator of the U.S. Environmental Protection Agency, a draft permit has been prepared for the use of the well described below within the State of Kansas.

(continued)

(Published in the Kansas Register July 3, 1997.)

Name and Address of Applicant **Well Location**Abbott Laboratories
1 Abbott Park Road, D539, AP34
Abbott Park, IL 60064-3500Well Identification SE¼, SE¼, NE¼, S33, T28S, R1W,
#DW-1 Sedgwick County
KS Permit No. 2770' fsl and 240' fel from SE corner of Section
KS-01-173-001

Description: Abbott Laboratories has no production operations at this facility. The permittee is authorized to inject nonhazardous liquid waste from this facility consisting of recovered contaminated groundwater. The permittee also is authorized to inject nonhazardous liquid waste from the adjacent Air Products Manufacturing facility in the event of malfunction or failure of the Air Products disposal well.

Notice of Full Redemption
City of Wichita, Kansas
Hospital Refunding Revenue Bonds
Series LXXIV, 1977
(Osteopathic Hospital of Wichita)
Dated October 1, 1977

Notice is hereby given, pursuant to Section 5 of Ordinance No. 35-258 of the City of Wichita, Kansas, that all of the outstanding City of Wichita, Kansas, Hospital Refunding Revenue Bonds, Series LXXIV, 1977 (Osteopathic Hospital of Wichita), maturing on and after February 1, 1998, will be redeemed and prepaid on August 1, 1997 (the redemption date), prior to their respective maturities subject to the provisions and limitations set forth herein.

Principal Amount	Maturity Date	Interest Rate
\$415,000	February 1, 1998	7.000%
\$685,000	February 1, 1999	7.000%

The principal amount of the above described Series 1977 Bonds maturing February 1, 1998 through and including February 1, 1999, shall become due and payable on August 1, 1997, at a redemption price equal to the principal amount thereof, plus accrued interest thereon to said redemption date, together with a premium of 1 percent of the principal amount of the Series 1977 Bonds so called for redemption and payment.

On August 1, 1997, all the Series 1977 Bonds will be due and payable at the principal office of Commerce Bank, N.A., Securities Processing Unit, Suite 0125, One First National Plaza, Chicago, IL 60670-0125, and from and after August 1, 1997, all interest on the Series 1977 Bonds will cease to accrue.

Under the provisions of the Interest and Dividend Tax Compliance Act of 1983, as amended and codified at Section 3406(a)(1) of the Internal Revenue Code of 1986, paying agents making payments of interest or principal on corporate securities or making payments of principal on municipal securities may be obligated to withhold a 31 percent tax remittance from individuals who fail to furnish the paying agent with a valid taxpayer identification number. Holders of the Series 1977 Bonds who wish to avoid the imposition of this required withholding tax should submit certified taxpayer identification numbers when presenting their Series 1977 Bonds for payment.

Neither Commerce Bank nor Osteopathic Hospital of Wichita shall be responsible for the selection or use of the CUSIP identification numbers, nor is any representation made as to the correctness of any CUSIP identification for the convenience of the holders of the Series 1977 Bonds.

Dated July 1, 1997.

Commerce Bank, N.A.
Wichita, Kansas
As Trustee

Doc. No. 019336

Written comments on the draft permits must be submitted to the attention of Lisa Duncan for agricultural permits or to the permit clerk for all other permits, Kansas Department of Health and Environment, Division of Environment, Bureau of Water, J Street and 2 North, Forbes Field, Building 283, Topeka, 66620. All comments post-marked or received on or before August 1 will be considered in the formulation of final determinations regarding this public notice. Please refer to the appropriate public notice number (KS-AG-97-152/154, KS-97-101/107, KS-ND-97-037/039, KS-PT-97-007, KS-EG-97-014) and the name of applicant as listed when preparing comments.

If no objections are received during the public notice period, the Secretary of Health and Environment will issue the final determination. If response to this notice indicates significant public interest, a public hearing may be held in conformance with state regulation 28-16-61 (28-46-21 for UIC). Media coordination for publication and/or announcement of the public notice or public hearing is handled by the Kansas Department of Health and Environment.

The applications, proposed permits, including proposed effluent limitations and special conditions, fact sheets as appropriate, comments received, and other information are on file and may be inspected at the Kansas Department of Health and Environment offices, Building 283, Forbes Field, Topeka, from 8 a.m. to 5 p.m. Monday through Friday. The documents are available upon request at the copying cost assessed by KDHE. Additional copies of this public notice also may be obtained at the Division of Environment.

Gary R. Mitchell
Secretary of Health
and Environment

Doc. No. 019320

State of Kansas

Department of Transportation

Notice to Contractors

Sealed proposals for the construction of road and bridge work in the following Kansas counties will be received at the office of the Chief of Construction and Maintenance, KDOT, Topeka, until 2 p.m. July 16, and then publicly opened:

District One—Northeast

Atchison—7-3 K-6758-01—K-7, from the north city limits of Atchison, north 0.07 mile (0.122 kilometer), slide repair. (State Funds)

Brown—C-3163-01—County road 1.2 miles (1.9 kilometers) east and 0.6 mile (1 kilometer) south of Robinson, 0.3 mile (0.5 kilometer), grading, bridge and surfacing. (Federal Funds)

Brown—20-7 K-4752-01—K-20, culvert 524 northeast of Everest, culvert replacement. (State Funds)

Douglas—59-23 K-6595-01—U.S. 59, Bridge 065, Wakarusa River, bridge overlay. (State Funds)

Johnson—7-46 K-6611-01—K-7, Bridges 191 and 192 over K-10, bridge overlay. (State Funds)

Johnson—69-46 K-6690-01—U.S. 69, from College Boulevard north to I-35, 3.4 miles (5.47 kilometers), pavement patching. (State Funds)

Johnson—285-46 K-6756-01—K-285, from south of K-10 to north of K-10, 0.6 mile (1 kilometer), overlay. (State Funds)

Riley—77-81 K-6606-01—U.S. 77, Bridge 015 (Fancy Creek), bridge overlay. (State Funds)

Shawnee—89 U-1596-01—29th and Indiana Street in Topeka, intersection improvement. (Federal Funds)

Wyandotte—70-105 K-6604-01—I-70, Bridge 096, west-bound over old K-32, bridge overlay. (State Funds)

Districtwide—106 K-6754-01—Various bridges in District 1, bridge deck patching. (State Funds)

Wyandotte—105 N-0072-01—Steele Road from Woodlawn to 18th Street Expressway in Kansas City, 1.2 miles (1.8 kilometers), grading and surfacing. (Federal Funds)

Wyandotte—73-105 N-0086-01—U.S. 73/K-7 and Parallel Parkway in Kansas City, 0.3 mile (0.6 kilometer), intersection improvement. (Federal Funds)

District Two—Northcentral

Jewell—C-3402-01—County road, 4 miles (6.4 kilometers) south and 2 miles (3.2 kilometers) west of Esbon, 0.2 mile (0.3 kilometer), grading and bridge. (Federal Funds)

Mitchell—181-62 K-6648-01—K-181, culvert 7.2 miles (11.6 kilometers) northwest of the Lincoln-Mitchell county line, culvert replacement. (State Funds)

District Three—Northwest

Ellis—183-26 K-6493-01—U.S. 183, from the Russell-Ellis county line, north to U.S. 183A at Hays, 11.4 miles (18.3 kilometers), sealing. (State Funds)

Norton—69 C-3349-01—County road, 1 mile (1.6 kilometers) north and 1 mile (1.6 kilometers) east of Clayton,

0.25 mile (0.4 kilometer), grading and bridge. (Federal Funds)

Phillips—183-74 K-6491-01—U.S. 183, from U.S. 36 in Phillipsburg, north to the Kansas-Nebraska state line, 18.6 miles (30 kilometers), sealing. (State Funds)

Rawlins—117-77 K-6485-01—K-117, from the U.S. 36 junction north to the Kansas-Nebraska state line, 12 miles (19.3 kilometers), sealing. (State Funds)

Rooks—183-82 K-6759-01—U.S. 183, 0.4 mile (0.7 kilometer) south of the north city limits of Stockton, north to the Rooks-Phillips county line, 8.5 miles (13.7 kilometers), sealing. (State Funds)

District Four—Southeast

Allen—1 C-3202-01—Austin Road from U.S. 169 east 1.5 miles (2.4 kilometers), grading and surfacing. (Federal Funds)

Coffey—16 C-3394-01—County road, 1.5 miles (2.4 kilometers) north and 6.2 miles (10 kilometers) east of Lebo, 0.2 mile (0.3 kilometer), grading and bridge. (Federal Funds)

Miami—169-61 K-6495-01—U.S. 169, south of K-7, north 20.7 miles (33.3 kilometers), overlay. (State Funds)

Woodson—75-104 K-6501-01—U.S. 75, from the Wilson-Woodson County line, north to the south city limits of Yates Center, 10.7 miles (17.2 kilometers), sealing. (State Funds)

District Five—Southcentral

Barton—56-5 U-1639-01—U.S. 56/K-96/K-156 and Harrison Street in Great Bend, traffic signals. (Federal Funds)

Butler—177-8 K-6638-01—K-177, Bridge 126 (Atchison, Topeka and Santa Fe Railroad), bridge overlay. (State Funds)

Kingman—54-48 K-6636-01—Bridge 60 located over U.S. 54, 7.1 miles (11.4 kilometers) east of the junction of U.S. 54/K-14, bridge overlay. (State Funds)

Reno—96-78 K-6634-01—K-96, Bridge 074 (canal in Hutchinson) and Bridge 075 (Cow Creek), bridge overlay. (State Funds)

Reno—61-78 K-6635-01—K-61, Bridge 077 over Chicago, Rock Island and Pacific Railroad, bridge overlay. (State Funds)

District Six—Southwest

Grant—34 C-3370-01—County road 5 miles (8 kilometers) south and 5.3 miles (8.5 kilometers) east of Ulysses, 0.2 mile (0.3 kilometer), grading, surfacing and bridge. (Federal Funds)

Proposals will be issued upon request to all prospective bidders who have been prequalified by the Kansas Department of Transportation on the basis of financial condition, available construction equipment and experience. Also, a statement of unearned contracts (Form No. 284) must be filed. There will be no discrimination against anyone because of race, age, religion, color, sex, handicap or national origin in the award of contracts.

Each bidder shall file a sworn statement executed by or on behalf of the person, firm, association or corporation.

(continued)

tion submitting the bid, certifying that such person, firm, association or corporation has not, either directly or indirectly, entered into any agreement, participated in any collusion, or otherwise taken any action in restraint of free competitive bidding in connection with the submitted bid. This sworn statement shall be in the form of an affidavit executed and sworn to by the bidder before a person who is authorized by the laws of the state to administer oaths. The required form of the affidavit will be provided by the state to each prospective bidder. Failure to submit the sworn statement as part of the bid approval package will make the bid nonresponsive and not eligible for award consideration.

Plans and specifications for the projects may be examined at the office of the respective county clerk or at the KDOT district office responsible for the work.

E. Dean Carlson
Secretary of Transportation

Doc. No. 019298

(Published in the Kansas Register July 3, 1997.)

**Summary Notice of Bond Sale
City of Hays, Kansas
\$952,100
General Obligation
Internal Improvement Bonds
Series 1997-A**

(General obligation bonds payable from unlimited ad valorem taxes)

Sealed Bids

Subject to the notice of bond sale dated June 17, 1997, sealed bids will be received by the clerk of the City of Hays, Kansas (the issuer), on behalf of the governing body at 1507 Main, Hays, KS 67601, until 3 p.m. July 10, 1997, for the purchase of \$952,100 principal amount of General Obligation Internal Improvement Bonds, Series 1997-A. No bid of less than the entire par value of the bonds and accrued interest thereon to the date of delivery will be considered.

Bond Details

The bonds will consist of fully registered bonds in the denomination of \$5,000 or any integral multiple thereof, except that one bond maturing on September 1, 1998, shall be in the principal amount of \$7,100 or integral multiples of \$5,000 in excess thereof. The bonds will initially be registered in the name of Cede & Co., as nominee of the Depository Trust Company, New York, New York, to which payments of principal of and interest on the bonds will be made. Individual purchases of bonds will be made in book-entry form only. Purchasers will not receive certificates representing their interest in bonds purchased. The bonds will be dated July 1, 1997, and will become due on September 1 in the years as follows:

Year	Principal Amount
1998	\$32,100
1999	45,000
2000	50,000
2001	50,000
2002	55,000
2003	55,000

2004	60,000
2005	65,000
2006	65,000
2007	70,000
2008	75,000
2009	75,000
2010	80,000
2011	85,000
2012	90,000

The bonds will bear interest from the date thereof at rates to be determined when the bonds are sold as hereinafter provided, which interest will be payable semiannually on March 1 and September 1 in each year, beginning March 1, 1998. Bonds maturing on September 1, 2005, and thereafter will be subject to redemption prior to maturity at the option of the city on September 1, 2004, and thereafter, in whole at any time or in part on any interest payment date, in such principal amounts for such maturities as shall be determined by the city, at a redemption price of 100 percent of the principal amount redeemed, plus accrued interest, without a premium.

Paying Agent and Bond Registrar

Kansas State Treasurer, Topeka, Kansas.

Good Faith Deposit

Each bid shall be accompanied by a cashier's or certified check drawn on a bank located in the United States or a financial surety bond in the amount of 2 percent of the principal amount of such series of bonds.

Delivery

The issuer will pay for printing the bonds and will deliver the same properly prepared, executed and registered without cost to the successful bidder on or about July 30, 1997, at such bank or trust company in the contiguous United States as may be specified by the successful bidder.

Assessed Valuation and Indebtedness

The equalized assessed tangible valuation for computation of bonded debt limitations for the year 1996 is \$111,395,765. The total general obligation indebtedness of the issuer as of the date of the bonds, including the bonds being sold and outstanding temporary notes, is \$9,557,100.

Approval of Bonds

The bonds will be sold subject to the legal opinion of Gilmore & Bell, P.C., Kansas City, Missouri, bond counsel, whose approving legal opinion as to the validity of the bonds will be furnished and paid for by the issuer, printed on the bonds and delivered to the successful bidder as and when the bonds are delivered. Reference is made to the preliminary official statement for further discussion of federal and Kansas income tax matters relating to the interest on the bonds.

Additional Information

Additional information regarding the bonds may be obtained from the city clerk, (913) 628-7300, or from the financial advisor, George K. Baum & Company, Kansas City, Missouri, (816) 474-1100.

Dated June 17, 1997.

City of Hays, Kansas
By: Carol Sue Grabbe, City Clerk
1507 Main
Hays, KS 67601

Doc. No. 019310

State of Kansas

State Conservation Commission

Notice to Contractors

Sealed bids for the construction of a 22,000 cubic yard detention dam, Site D-17 in Jackson County, will be received by the Delaware Watershed Joint District No. 10 at the district office, 125 W. 4th, Holton, 66436, until 2 p.m. July 15 and then opened. A copy of the invitation for bids and the plans and specifications can be reviewed at and obtained from the King Engineering, Inc. office, (913) 364-4312. A \$25 returnable deposit will be required for each set of plans.

Tracy D. Streeter
Executive Director

Doc. No. 019303

State of Kansas

State Conservation Commission

Notice to Contractors

Sealed bids for the construction of an 18,500 cubic yard detention dam, Site 2-25A in Marshall County, will be received by the Vermillion Creek Watershed District No. 70 at King Engineering, Inc., 125 W. 4th, Holton, 66436, until 5 p.m. July 14, or bids may be hand carried and submitted prior to bid opening at 9 a.m. July 15 at the Beattie Rural Water District Office, 707 Main St., Beattie (no telephone available). A copy of the invitation for bids and the plans and specifications can be reviewed at and obtained from the King Engineering, Inc. office, (913) 364-4312. A \$25 deposit will be required for each set of plans.

Tracy D. Streeter
Executive Director

Doc. No. 019302

(Published in the Kansas Register July 3, 1997.)

Summary Notice of Bond Sale

\$708,500

City of Kingman, Kansas

General Obligation Bonds, Series 1997

(General obligation bonds payable from unlimited ad valorem taxes)

Sealed Bids

Subject to the notice of bond sale dated June 26, 1997, sealed bids will be received by the clerk of the City of Kingman, Kansas (the issuer), on behalf of the governing body at City Hall, 324 N. Main, Kingman, KS 67068, until 5 p.m. July 10, 1997, for the purchase of \$708,500 principal amount of General Obligation Bonds, Series 1997. No bid of less than 100 percent of the principal amount of the bonds and accrued interest thereon to the date of delivery will be considered.

Bond Details

The bonds will consist of fully registered bonds in the denomination of \$5,000 or any integral multiple thereof, except one bond in the denomination of \$8,500. The

bonds will be dated July 15, 1997, and will become due on September 1 in the years as follows:

Year	Principal Amount
1998	\$ 53,500
1999	60,000
2000	60,000
2001	65,000
2002	70,000
2003	70,000
2004	75,000
2005	80,000
2006	85,000
2007	90,000

The bonds will bear interest from the date thereof at rates to be determined when the bonds are sold as hereinafter provided, which interest will be payable semiannually on March 1 and September 1 in each year, beginning March 1, 1998.

Optional Book-Entry-Only System

The successful bidder may elect to have the bonds registered under a book-entry-only system administered through DTC.

Paying Agent and Bond Registrar

Kansas State Treasurer, Topeka, Kansas.

Good Faith Deposit

Each bid shall be accompanied by a good faith deposit in the form of a cashier's or certified check drawn on a bank located in the United States or a qualified financial surety bond in the amount of \$14,170 (2 percent of the principal amount of the bonds).

Delivery

The issuer will pay for printing the bonds and will deliver the same properly prepared, executed and registered without cost to the successful bidder on or before July 31, 1997, at DTC for the account of such bank or trust company in the contiguous United States as may be specified by the successful bidder.

Assessed Valuation and Indebtedness

The equalized assessed tangible valuation for computation of bonded debt limitations for the year 1996 is \$13,276,695. The total general obligation indebtedness of the issuer as of the date of the delivery of the bonds, including the bonds being sold but excluding temporary notes to be retired in conjunction therewith, is \$1,035,090.

Approval of Bonds

The bonds will be sold subject to the legal opinion of Gilmore & Bell, P.C., Wichita, Kansas, bond counsel, whose approving legal opinion as to the validity of the bonds will be furnished and paid for by the issuer, printed on the bonds and delivered to the successful bidder when the bonds are delivered.

Additional Information

Additional information regarding the bonds may be obtained from the clerk, (316) 532-3111.

Dated June 26, 1997.

City of Kingman, Kansas

Doc. No. 019324

State of Kansas

State Conservation Commission

Notice to Contractors

Sealed bids for the construction of a 17,200 cubic yard detention dam, Site D-34 in Jackson County, will be received by the Delaware Watershed Joint District No. 10 at the district office, 125 W. 4th, Holton, 66436, until 2:15 p.m. July 15 and then opened. A copy of the invitation for bids and the plans and specifications can be reviewed at and obtained from the King Engineering, Inc. office, (913) 364-4312. A \$25 returnable deposit will be required for each set of plans and specifications.

Tracy D. Streeter
Executive Director

9/1/03	95,000
9/1/04	100,000
9/1/05	105,000
9/1/06	110,000
9/1/07	120,000
9/1/08	125,000
9/1/09	130,000
9/1/10	140,000
9/1/11	145,000
9/1/12	155,000
9/1/13	160,000
9/1/14	170,000
9/1/15	180,000
9/1/16	190,000
9/1/17	200,000

Doc. No. 019304

(Published in the Kansas Register July 3, 1997.)

Summary Notice of Bond Sale

\$2,500,000

General Obligation Bonds

Series 1997

Consolidated Fire District No. 2

Northeast Johnson County, Kansas

(General obligations payable from unlimited ad valorem taxes)

Sealed Bids

Subject to the notice of bond sale dated June 26, 1997, sealed bids will be received by the treasurer of Consolidated Fire District No. 2, Northeast Johnson County, Kansas, on behalf of the governing body at district headquarters, 6400 Martway, Mission, KS 66202, on Monday, July 14, 1997, for the purchase of \$2,500,000 principal amount of General Obligation Bonds, Series 1997, of the district. Bids for the bonds will be opened at 11 a.m. local time on that day. All bids will be publicly opened and read at the sale and will be acted upon by the governing body at its meeting to be held at 5:40 p.m. that day. No bid will be considered of less than 100 percent of the principal amount of the bonds and accrued interest to the date of delivery. No oral or auction bids will be considered.

The Bonds

The bonds will consist of fully registered certificated bonds in the denomination of \$5,000 or any integral multiple thereof. Bonds shall initially be registered in the name of Cede & Co., as nominee of the Depository Trust Company, New York, New York, to which payments of principal of and interest on the bonds will be made. Individual purchases of bonds will be made in book-entry form only. Purchasers will not receive certificates representing their interest in bonds purchased. The bonds will be dated July 15, 1997, and will become due annually on September 1, beginning September 1, 1998, in the years as follows:

Year	Principal Amount
9/1/98	\$ 45,000
9/1/99	75,000
9/1/00	80,000
9/1/01	85,000
9/1/02	90,000

The bonds will bear interest from the dated date at rates to be determined when the bonds are sold, which interest will be payable semiannually on March 1 and September 1 in each year, beginning March 1, 1998.

Paying Agent and Bond Registrar

Kansas State Treasurer, Topeka, Kansas.

Good Faith Deposit

Each bid for the bonds shall be accompanied by a certified or cashier's check or a financial surety bond in the amount of 2 percent of the principal amount of the bonds, payable to the order of the district treasurer.

Delivery and Payment

The district will pay for preparing the bonds. The bonds will be delivered in book-entry form only through the facilities of Depository Trust Company, New York, New York, on or before July 30, 1997.

Assessed Valuation and Indebtedness

The equalized assessed tangible valuation for computation of bonded debt limitations for the year 1997 is \$488,357,376. The total general obligation indebtedness of the district as of the date of the bonds, including the bonds being sold, is \$2,500,000, and the total general obligation indebtedness of the district as of December 31, 1996, for debt limitation purposes, was \$-0-

Legal Matters

The bonds will be sold subject to the approving legal opinion of Gilmore & Bell, P.C., Kansas City, Missouri, bond counsel, which opinion will be furnished and paid for by the district, will accompany the bonds and will be delivered to the successful bidder when the bonds are delivered.

Additional Information

Additional information regarding the bonds may be obtained from the district's financial advisor, Country Club Bank, N.A., Kansas City, Missouri, Attention: Greg Vahrenberg, (816) 751-1433.

Dated June 26, 1997.

Consolidated Fire District No. 2
Northeast Johnson County, Kansas

Kevin A. Kombrink
Treasurer

6400 Martway
Mission, KS 66202
(913) 432-1195

Doc. No. 019334

(Published in the Kansas Register July 3, 1997.)

**Summary Notice of Bond Sale
City of Louisburg, Kansas
\$1,950,000
General Obligation Bonds
Series 1997-A**

**(General obligation bonds payable from
unlimited ad valorem taxes)**

Sealed Bids

As described in the notice of bond sale dated July 3, 1997, sealed bids will be received by the city clerk of the City of Louisburg, Kansas, on behalf of the governing body at City Hall, 5 S. Peoria, Louisburg, KS 66053, until 11 a.m. July 16, 1997, for the purchase of \$1,950,000 principal amount of General Obligation Bonds, Series 1997-A. No bid of less than the entire par value of the bonds, except a discount of not greater than .5 percent, and accrued interest to the date of delivery will be considered.

Bond Details

The bonds will consist of fully registered bonds in the denomination of \$5,000 or any integral multiple thereof. The bonds will be dated August 1, 1997, and will become due September 1 in the years as follows:

Maturity September 1	Principal Amount
1999	\$ 20,000
2000	35,000
2001	45,000
2002	65,000
2003	80,000
2004	105,000
2005	130,000
2006	155,000
2007	190,000
2008	235,000
2009	270,000
2010	290,000
2011	330,000

The bonds will bear interest from that date at rates to be determined when the bonds are sold as provided, which interest will be payable semiannually on March 1 and September 1 in each year, beginning March 1, 1998.

Paying Agent and Bond Registrar

Kansas State Treasurer, Topeka, Kansas.

Good Faith Deposit

Each bid shall be accompanied by a cashier's or certified check drawn on a bank located in the United States or a qualified surety bond in the amount of \$39,000 (2 percent of the principal amount of the bonds).

Delivery

The city will pay for printing the bonds and will deliver the same properly prepared, executed and registered without cost to the successful bidder on or before August 7, 1997, at such location in the United States as may be specified by the successful bidder.

Assessed Valuation and Indebtedness

The equalized assessed tangible valuation for computation of bonded debt limitations for the year 1996 is

\$11,543,498. The total general obligation indebtedness of the city as of the date of the bonds, including the bonds being sold, is \$3,098,000.

Approval of Bonds

The bonds will be sold subject to the legal opinion of Gilmore & Bell, P.C., Wichita, Kansas, bond counsel, whose approving legal opinion as to the validity of the bonds will be furnished and paid for by the city, printed on the bonds and delivered to the successful bidder when the bonds are delivered.

Additional Information

Additional information regarding the bonds may be obtained from the city clerk, (913) 837-5371; from the financial advisor, Kirkpatrick Pettis, 9401 Indian Creek Parkway, Suite 520, Overland Park, KS 66210, Attention: Marty Nohe, (913) 338-3447; or from bond counsel, Logan, Riley, Carson & Kaup, L.C., 9200 Indian Creek Parkway, Suite 230, Overland Park, KS 66210, (913) 661-0399.

Dated July 3, 1997.

City of Louisburg, Kansas
By Sue Seufferling, City Clerk
Louisburg City Hall
5 S. Peoria
Louisburg, KS 66053

Doc. No. 019323

State of Kansas**Board of Accountancy****Permanent Administrative
Regulations****Article 1.—EXAMINATIONS**

74-1-5. (Authorized by K.S.A. 1981 Supp. 1-202(a); implementing K.S.A. 1981 Supp. 1-301(b)(1); effective, E-82-27, Dec. 22, 1981; effective May 1, 1982; revoked July 18, 1997.)

74-1-6. Refund of examination fees not used. (a) If a candidate is unable to be present at an examination for which the fee has been paid, the fee shall be forfeited, unless the candidate notifies the board in writing within 30 days after the examination with an acceptable reason for failing to sit for the examination as scheduled. Acceptable reasons for not sitting shall include a documented illness, death in the immediate family, or any other reason that the board determines to be unavoidable.

(b) If the board accepts the reason for a candidate's failure to sit for a scheduled examination, the fee shall be refunded, less a processing fee in an amount not to exceed 25% of the applicable application fee. (Authorized by K.S.A. 1-202(a); implementing K.S.A. 1996 Supp. 1-301(b)(1), as amended by 1997 HB 2298, Sec. 2; effective July 18, 1997.)

Article 2.—APPLICATIONS

74-2-1. Filing date for applications. In order for an applicant to be admitted to an examination, the application submitting evidence that the applicant has met all the requirements shall be filed in the office of the secre-

(continued)

tary of the board examination administering entity on or before March 1 for the May examinations or on or before September 1 for the November examinations. (Authorized by K.S.A. 1-202(a); implementing K.S.A. 1-302a, as amended by 1997 HB 2298, Sec. 1; effective Jan. 1, 1966; amended May 1, 1978; amended, E-82-27, Dec. 22, 1981; amended May 1, 1982; amended July 18, 1997.)

Article 12.—FEES

74-12-1. Fees. Each applicant shall submit the appropriate application form and fee as shown in the following schedule.

(a) Initial examination	\$200.00
(b) Complete reexamination	\$150.00
(c) Partial reexamination for the following:	
(1) Any two subjects	\$120.00
(2) One subject	\$ 60.00
(3) Refund of candidate fees (applicable application fee, less 25%)	
(d) Issuance of Kansas certificate (initial or duplicate)	\$ 25.00
(e) Issuance of reciprocal certificate	\$225.00
(f) Initial permit to practice as a certified public accountant:	
(1) For more than one year of a biennial period	\$110.00
(2) For one year or less of a biennial period	\$ 55.00
(g) Renewal of biennial permit to practice as certified public accountant:	
(1) If received on or before July 1 of the renewal year in which the permit expires ..	\$110.00
(2) If received after July 1 of the renewal year in which the permit expires	\$165.00
(h) Reinstatement of permit to practice as a certified public accountant that has lapsed:	
(1) For more than one year of a biennial period	\$165.00
(2) For one year or less of a biennial period	\$ 82.50
(i) Issuance of a duplicate permit	\$ 25.00
(j) Renewal of a biennial permit to practice as a licensed municipal public accountant:	
(1) If received on or before July 1 of the odd-numbered renewal years	\$ 50.00
(2) If received after July 1, or for reinstatement of a permit to practice that has been lapsed for one or more years	\$ 75.00
(k) To proctor another state's candidate at a CPA examination in Kansas	\$100.00

(Authorized by and implementing K.S.A. 1996 Supp. 1-301, as amended by 1997 HB 2298, Sec. 2 and K.S.A. 75-1119a; effective May 1, 1988; amended May 22, 1989; amended Dec. 18, 1989; amended Sept. 26, 1994; amended Aug. 23, 1996; amended July 18, 1997.)

Susan L. Somers
Executive Director

Doc. No. 819322

State of Kansas

Department of Human Resources

Permanent Administrative Regulations

Article 49.—FEE SCHEDULE FOR BOILER INSPECTIONS

49-49-1. Boiler inspection and certificate fees. (a) Inspection fees. (1) Power boilers and high-pressure, high-temperature water boilers:

Mini-boilers	\$ 50.00
Boilers of 50 sq. ft. of heating surface or less	\$100.00
Boilers over 50 sq. ft. of heating surface and less than 4,000 sq. ft. of heating surface	\$125.00
Boilers of 4,000 sq. ft. of heating surface or more and less than 10,000 sq. ft. of heating surface	\$150.00
Boilers of 10,000 sq. ft. of heating surface or more	\$175.00

(2) Intertial inspections of heating boilers:

Heating boilers without a manhole	\$ 75.00
Heating boilers with a manhole	\$ 90.00

(3) External inspections of heating boilers:

Heating boilers without a manhole	\$ 50.00
Heating boilers with a manhole	\$ 65.00
Hot water supply boilers	\$ 50.00

(4) External inspections of power boilers:

Boilers of 50 sq. ft. of heating surface or less	\$ 44.00
Boilers over 50 sq. ft. of heating surface, but less than 500 sq. ft. of heating surface	\$ 50.00
Boilers of 500 sq. ft. of heating surface or more, but less than 1,000 sq. ft. of heating surface	\$ 75.00
Boilers of 1,000 sq. ft. of heating surface or more	\$150.00

(5) Hydrostatic tests. When it is necessary to make a special trip to witness the application of a hydrostatic test, an additional fee based on the scale of fees applicable to a certificate of inspection of the boiler shall be charged.

(6) All other inspections, including shop inspections, shop reviews, special inspections, and inspections of secondhand or used boilers, when made by the chief or deputy inspector, shall be charged a fee of \$250.00 per day, plus all expenses, including travel and hotel expense.

(b) Certificate fee.

(1) The certificate fee shall be \$25.00.

(2) Replacement of lost or misplaced certificates shall be \$10.00. (Authorized by K.S.A. 44-916; implementing K.S.A. 44-926; effective, T-83-41, Nov. 23, 1982; effective May 1, 1983; amended May 1, 1984; amended May 1, 1987; amended, T-88-41, Oct. 24, 1987; amended May 1, 1988; amended June 25, 1990; amended July 18, 1997.)

Wayne L. Franklin
Secretary of Human Resources

Doc. No. 019299

INDEX TO ADMINISTRATIVE REGULATIONS

This index lists in numerical order the new, amended and revoked administrative regulations and the volume and page number of the *Kansas Register* issue in which more information can be found. This cumulative index supplements the index found in the 1996 Supplement to the *Kansas Administrative Regulations*.

AGENCY 1: DEPARTMENT OF ADMINISTRATION

Reg. No.	Action	Register
1-1-1	Amended	V. 15, p. 703
1-1-2	Revoked	V. 15, p. 704
1-1-3	Revoked	V. 15, p. 704
1-1-4	Revoked	V. 15, p. 704
1-2-53	Revoked	V. 15, p. 704
1-2-57	Amended	V. 15, p. 704
1-2-72	Amended	V. 15, p. 704
1-2-88	Amended	V. 15, p. 704
1-3-1	Revoked	V. 15, p. 704
1-3-3	Revoked	V. 15, p. 704
1-3-4	Revoked	V. 15, p. 704
1-4-2	Amended	V. 15, p. 704
1-4-6	Revoked	V. 15, p. 704
1-5-1	Amended	V. 15, p. 704
1-5-2	Revoked	V. 15, p. 704
1-5-3	Revoked	V. 15, p. 704
1-5-6	Revoked	V. 15, p. 704
1-5-7	Amended	V. 15, p. 704
1-5-12	Amended	V. 15, p. 705
1-5-15	Amended	V. 15, p. 705
1-5-22	Amended	V. 15, p. 706
1-5-24	Amended	V. 15, p. 706
1-5-26	Amended	V. 15, p. 707
1-6-22a	Amended	V. 15, p. 707
1-6-23	Amended	V. 15, p. 708
1-6-24	Amended	V. 15, p. 708
1-6-31	Amended	V. 15, p. 708
1-6-33	Amended	V. 16, p. 973
1-8-1	Revoked	V. 15, p. 709
1-8-5	Amended	V. 15, p. 709
1-8-7	Revoked	V. 15, p. 709
1-9-2	Amended	V. 16, p. 973
1-9-7c	Amended	V. 16, p. 974
1-9-9	Revoked	V. 15, p. 709
1-9-13	Amended	V. 16, p. 974
1-9-15	Revoked	V. 15, p. 709
1-9-16	Revoked	V. 15, p. 709
1-9-17	Revoked	V. 16, p. 975
1-9-19a	Amended	V. 15, p. 709
1-9-23	Amended	V. 15, p. 710
1-9-26	Amended	V. 16, p. 975
1-9-27	Amended	V. 16, p. 976
1-10-6	Amended	V. 15, p. 713
1-10-8	Revoked	V. 15, p. 713
1-10-9	Revoked	V. 15, p. 713
1-11-1	Amended	V. 15, p. 713
1-13-1a	Amended	V. 16, p. 977
1-13-2	Revoked	V. 15, p. 714
1-13-3	Revoked	V. 15, p. 714
1-13-4	Revoked	V. 15, p. 714
1-14-6	Revoked	V. 15, p. 714
1-14-7	Amended	V. 15, p. 714
1-14-10	Amended	V. 15, p. 715
1-14-11	Amended	V. 15, p. 715
1-14-12a	New	V. 16, p. 170
1-16-18a	Amended	V. 15, p. 317
1-17-10	Amended	V. 15, p. 1706
1-18-1a	Amended	V. 15, p. 1508
1-45-4	Amended	V. 15, p. 1706
1-45-7	Amended	V. 15, p. 1706
1-45-8	Amended	V. 15, p. 1706
1-63-2	Amended	V. 16, p. 978

AGENCY 5: DEPARTMENT OF AGRICULTURE—DIVISION OF WATER RESOURCES

Reg. No.	Action	Register
5-25-1 through 5-25-10	Amended	V. 15, p. 410-412
5-50-1	Amended	V. 15, p. 1861

5-50-2	Amended	V. 15, p. 1861
5-50-3	Revoked	V. 15, p. 1862
5-50-4	Amended	V. 15, p. 1862
5-50-5	Amended	V. 15, p. 1862
5-50-6	Amended	V. 15, p. 1863
5-50-7	New	V. 15, p. 1863
5-50-8	New	V. 15, p. 1863

AGENCY 7: SECRETARY OF STATE

Reg. No.	Action	Register
7-18-1	New	V. 15, p. 1508
7-18-2	New	V. 15, p. 1508
7-18-3	New	V. 15, p. 1508
7-19-1	Amended	V. 16, p. 821
7-19-2	Amended	V. 16, p. 821
7-19-3	Amended	V. 16, p. 822
7-19-4	Amended	V. 16, p. 822
7-19-7	New	V. 16, p. 822
7-23-2	Amended	V. 15, p. 1927
7-23-4	Amended	V. 15, p. 1927
7-23-8	Revoked	V. 15, p. 1927
7-38-1	New	V. 15, p. 1927
7-38-2	New	V. 15, p. 1927

AGENCY 9: ANIMAL HEALTH DEPARTMENT

Reg. No.	Action	Register
9-10-31	New	V. 15, p. 1671
9-10-32	New	V. 15, p. 1671
9-18-1	Amended	V. 15, p. 1671
9-19-1 through 9-19-11	Amended	V. 15, p. 1671-1677
9-25-1 through 9-25-15	New	V. 15, p. 1677-1684
9-26-1	New	V. 15, p. 1684

AGENCY 10: KANSAS BUREAU OF INVESTIGATION

Reg. No.	Action	Register
10-20-2	Amended	V. 16, p. 1049
10-20-3	Revoked	V. 16, p. 1049
10-20-4	Amended	V. 16, p. 1049

AGENCY 11: STATE CONSERVATION COMMISSION

Reg. No.	Action	Register
11-8-8	Amended	V. 15, p. 1401

AGENCY 16: ATTORNEY GENERAL

Reg. No.	Action	Register
16-2-1	Amended	V. 15, p. 375
16-5-1	Amended	V. 15, p. 375
16-5-4	Amended	V. 15, p. 375
16-5-5	Amended	V. 15, p. 376
16-6-1	Amended	V. 15, p. 376
16-9-1	New	V. 16, p. 1078

AGENCY 17: STATE BANKING DEPARTMENT

Reg. No.	Action	Register
17-1-1	New	V. 15, p. 1130
17-9-1 through 17-9-10	New	V. 15, p. 1130, 1131
17-10-1	Revoked	V. 15, p. 1131
17-11-1 through 17-11-12	Revoked	V. 15, p. 1131
17-11-13	Amended	V. 15, p. 1131
17-11-14	Amended	V. 15, p. 1380
17-11-15 through 17-11-19	Amended	V. 15, p. 1131, 1132
17-11-20	Revoked	V. 15, p. 1132
17-11-21	Amended	V. 15, p. 1132
17-11-23	New	V. 15, p. 1132
17-12-1	Amended	V. 15, p. 1132
17-12-2	Amended	V. 15, p. 1132
17-16-1	Amended	V. 15, p. 1132
17-16-2	Amended	V. 15, p. 1132
17-16-3	Revoked	V. 15, p. 1133
17-16-4	Amended	V. 15, p. 1133
17-16-5 through 17-16-8	Revoked	V. 15, p. 1133

17-16-9	Amended	V. 15, p. 1133
17-17-1 through 17-17-10	Amended	V. 15, p. 1133, 1134
17-18-1 through 17-18-4	Revoked	V. 15, p. 1134
17-21-1 through 17-21-6	Amended	V. 15, p. 1134, 1135
17-21-7	Revoked	V. 15, p. 1135
17-21-8	Amended	V. 15, p. 1135

AGENCY 24: KANSAS WHEAT COMMISSION

Reg. No.	Action	Register
24-1-1	Amended	V. 15, p. 703

AGENCY 25: STATE GRAIN INSPECTION DEPARTMENT

Reg. No.	Action	Register
25-1-1	Revoked	V. 15, p. 138
25-3-3	Amended	V. 15, p. 138
25-4-1	Revoked	V. 15, p. 1380
25-4-4	Amended	V. 15, p. 1538

AGENCY 26: DEPARTMENT ON AGING

Reg. No.	Action	Register
26-5-6	Amended	V. 15, p. 1625
26-5-9	New	V. 15, p. 1626
26-5-10	New	V. 15, p. 1626
26-6-1 through 26-6-8	Revoked	V. 15, p. 1626

AGENCY 28: DEPARTMENT OF HEALTH AND ENVIRONMENT

Reg. No.	Action	Register
28-1-9	Revoked	V. 15, p. 550
28-1-10	Revoked	V. 15, p. 550
28-1-13	Amended	V. 15, p. 970
28-1-14	Amended	V. 15, p. 970
28-1-15	Amended	V. 15, p. 971
28-1-19	Revoked	V. 15, p. 550
28-1-21	Revoked	V. 15, p. 550
28-1-22	Revoked	V. 15, p. 550
28-3-5	Revoked	V. 15, p. 550
28-3-6	Revoked	V. 15, p. 550
28-4-72	Revoked	V. 15, p. 551
28-4-431	Revoked	V. 15, p. 551
28-4-506	Revoked	V. 15, p. 551
28-4-507	Revoked	V. 15, p. 551
28-4-508	Revoked	V. 15, p. 551
28-4-558 through 28-4-563	Amended	V. 15, p. 490-494
28-4-567	Amended	V. 15, p. 494
28-4-570	Amended	V. 15, p. 495
28-5-8	Revoked	V. 15, p. 551
28-6-1	Revoked	V. 15, p. 551
28-6-2	Revoked	V. 15, p. 551
28-7-1 through 28-7-9	Revoked	V. 15, p. 551
28-8-1	Revoked	V. 15, p. 551
28-10-36	Revoked	V. 15, p. 551
28-10-40	Revoked	V. 15, p. 551
28-10-41	Revoked	V. 15, p. 551
28-11-1 through 28-11-6	Revoked	V. 15, p. 551
28-13-10	Revoked	V. 15, p. 551
28-13-11	Revoked	V. 15, p. 551
28-16-50 through 28-16-54	Revoked	V. 15, p. 551
28-16-56a	Revoked	V. 15, p. 1402
28-16-56b	Revoked	V. 15, p. 1402
28-16-56c	New	V. 15, p. 1402
28-16-56d	New	V. 15, p. 1403
28-16-59	Amended	V. 15, p. 1403
28-16-65	Revoked	V. 15, p. 551
28-16-67	Revoked	V. 15, p. 551
28-17-5	Revoked	V. 15, p. 551

(continued)

28-17-8	Revoked	V. 15, p. 551	28-35-178b	Amended	V. 15, p. 1592	30-4-65w	Revoked	V. 16, p. 255
28-19-45	Revoked	V. 15, p. 183	28-35-180a	Amended	V. 15, p. 1593	30-4-70	Amended	V. 16, p. 255
28-19-46	Revoked	V. 15, p. 183	28-35-184b	New	V. 15, p. 1596	30-4-70w	Revoked	V. 16, p. 256
28-19-47	Revoked	V. 15, p. 183	28-35-193b	New	V. 15, p. 1596	30-4-71	Revoked	V. 16, p. 256
28-19-79	New	V. 16, p. 584	28-35-201	New	V. 15, p. 1598	30-4-71w	Revoked	V. 16, p. 256
28-19-83			28-35-202	New	V. 15, p. 1599	30-4-72	Revoked	V. 16, p. 256
through			28-35-290	New	V. 15, p. 1601	30-4-72w	Revoked	V. 16, p. 256
28-19-96	Revoked	V. 15, p. 551	28-35-291	New	V. 15, p. 1601	30-4-73	Revoked	V. 16, p. 256
28-19-98	Revoked	V. 15, p. 551	28-35-362	Amended	V. 15, p. 1602	30-4-74	Revoked	V. 16, p. 256
28-19-98a	Revoked	V. 15, p. 551	28-37-10			30-4-74w	Revoked	V. 16, p. 256
28-19-99			through			30-4-78	Revoked	V. 16, p. 256
through			28-37-14	Revoked	V. 15, p. 553	30-4-80	Amended	V. 16, p. 256
28-19-108	Revoked	V. 15, p. 552	28-39-144	Amended	V. 16, p. 177	30-4-85a	Revoked	V. 16, p. 256
28-19-108a	Revoked	V. 15, p. 552	28-39-145	Amended	V. 16, p. 179	30-4-90	Amended	V. 16, p. 257
28-19-109	Revoked	V. 15, p. 552	28-39-146	Amended	V. 16, p. 181	30-4-90w	Revoked	V. 16, p. 259
28-19-119			28-39-147	Amended	V. 16, p. 181	30-4-95	Amended	V. 16, p. 259
to			28-39-148	Amended	V. 16, p. 182	30-4-96	Amended	V. 16, p. 259
28-19-121a	Revoked	V. 15, p. 552	28-39-149	Amended	V. 16, p. 183	30-4-100	Amended	V. 16, p. 260
28-19-123	Revoked	V. 15, p. 552	28-39-150	Amended	V. 16, p. 184	30-4-100w	Revoked	V. 16, p. 260
28-19-124	Revoked	V. 15, p. 552	28-39-151	Amended	V. 16, p. 184	30-4-101	Amended	V. 16, p. 260
28-19-125	Revoked	V. 15, p. 552	28-39-152	Amended	V. 16, p. 185	30-4-102	Amended	V. 16, p. 261
28-19-127			28-39-153	Amended	V. 16, p. 187	30-4-105	Revoked	V. 16, p. 261
through			28-39-154	Amended	V. 16, p. 187	30-4-105w	Revoked	V. 16, p. 261
28-19-131	Revoked	V. 15, p. 552	28-39-155	Amended	V. 16, p. 188	30-4-106	Amended	V. 16, p. 261
28-19-133			28-39-156	Amended	V. 16, p. 188	30-4-106w	Revoked	V. 16, p. 262
through			28-39-157	Amended	V. 16, p. 189	30-4-108	Amended	V. 16, p. 262
28-19-141	Revoked	V. 15, p. 552	28-39-158	Amended	V. 16, p. 190	30-4-109	Amended	V. 16, p. 262
28-19-149			28-39-159	Amended	V. 16, p. 192	30-4-109w	Revoked	V. 16, p. 263
through			28-39-160	Amended	V. 16, p. 192	30-4-110	Amended	V. 16, p. 1001
28-19-162	Revoked	V. 15, p. 552	28-39-161	Amended	V. 16, p. 192	30-4-110w	Revoked	V. 16, p. 264
28-19-202	Amended	V. 16, p. 176	28-39-162	Amended	V. 16, p. 193	30-4-111	Amended	V. 16, p. 1002
28-19-645	New	V. 15, p. 183	28-39-162a	Amended	V. 16, p. 194	30-4-111w	Revoked	V. 16, p. 265
28-19-646	New	V. 15, p. 183	28-39-162b	Amended	V. 16, p. 199	30-4-112w	Revoked	V. 16, p. 265
28-19-647	New	V. 15, p. 183	28-39-162c	Amended	V. 16, p. 200	30-4-113	Amended	V. 16, p. 1002
28-19-648	New	V. 15, p. 184	28-39-163	Amended	V. 16, p. 204	30-4-113w	Revoked	V. 16, p. 266
28-19-720	Amended	V. 16, p. 823	28-39-240			30-4-120	Amended	V. 16, p. 266
28-19-735	Amended	V. 16, p. 823	through			30-4-120w	Revoked	V. 16, p. 266
28-19-750	Amended	V. 16, p. 823	28-39-256	New	V. 16, p. 206-213	30-4-121	Revoked	V. 15, p. 915
28-19-800	New	V. 15, p. 257	28-41-1			30-4-122a	Revoked	V. 16, p. 266
28-19-801	New	V. 15, p. 258	through			30-4-130	Amended	V. 16, p. 266
28-21-3	Revoked	V. 15, p. 552	28-41-9	Revoked	V. 15, p. 553	30-4-130w	Revoked	V. 16, p. 268
28-21-90a	Revoked	V. 15, p. 552	28-42-1	Revoked	V. 15, p. 553	30-4-140	Amended	V. 16, p. 268
28-21-91a	Revoked	V. 15, p. 552	28-42-3			30-4-140w	Revoked	V. 16, p. 268
28-21-91b	Revoked	V. 15, p. 552	through			30-5-58	Amended	V. 16, p. 1003
28-21-92a	Revoked	V. 15, p. 552	28-42-7	Revoked	V. 15, p. 553	30-5-64	Amended	V. 16, p. 1008
28-21-93a	Revoked	V. 15, p. 552	28-42-9			30-5-70	Amended	V. 15, p. 1017
28-21-94a	Revoked	V. 15, p. 552	through			30-5-80	Revoked	V. 16, p. 1010
28-21-96a	Revoked	V. 15, p. 552	28-42-16	Revoked	V. 15, p. 553	30-5-81	Amended	V. 15, p. 925
28-21-98a	Revoked	V. 15, p. 552	28-49-1			30-5-88	Amended	V. 15, p. 925
28-21-99a	Revoked	V. 15, p. 552	through			30-5-101	Amended	V. 16, p. 1010
28-21-102			28-49-8	Revoked	V. 15, p. 553	30-5-109	Amended	V. 16, p. 1010
through			28-68-1			30-5-118a	Amended	V. 16, p. 1010
28-21-112	Revoked	V. 15, p. 552	through			30-5-300		
28-23-5	Revoked	V. 15, p. 552	28-68-9	New	V. 15, p. 1931-1934	through		
28-23-8	Revoked	V. 15, p. 552				30-5-308	New	V. 15, p. 1877-1880
28-23-14	Revoked	V. 15, p. 552				30-5-300	Amended	V. 16, p. 1013
28-23-15	Revoked	V. 15, p. 552				30-5-307	Amended	V. 16, p. 1016
28-23-25	Revoked	V. 15, p. 552				30-5-309	New	V. 16, p. 1016
28-23-33	Revoked	V. 15, p. 552				30-6-34	Amended	V. 16, p. 268
28-23-60						30-6-35	Amended	V. 16, p. 1017
through						30-6-35w	Revoked	V. 16, p. 268
28-23-66	Revoked	V. 15, p. 552				30-6-41	Amended	V. 16, p. 268
28-23-69	Revoked	V. 15, p. 552				30-6-41w	Revoked	V. 16, p. 269
28-23-72	Revoked	V. 15, p. 553				30-6-50w	Revoked	V. 16, p. 269
28-23-74	Revoked	V. 15, p. 553				30-6-52	Amended	V. 16, p. 269
28-23-76	Revoked	V. 15, p. 553				30-6-52w	Revoked	V. 16, p. 269
28-23-77	Revoked	V. 15, p. 553				30-6-53	Amended	V. 15, p. 1880
28-26-80						30-6-53w	Revoked	V. 16, p. 269
through						30-6-54	Amended	V. 16, p. 688
28-26-87	Revoked	V. 15, p. 553				30-6-54w	Revoked	V. 16, p. 270
28-26-90a	Revoked	V. 15, p. 553				30-6-55	Amended	V. 16, p. 270
28-28-1	Revoked	V. 15, p. 553				30-6-55w	Revoked	V. 16, p. 270
28-28-2	Revoked	V. 15, p. 553				30-6-56w	Revoked	V. 16, p. 270
28-29-1	Revoked	V. 15, p. 553				30-5-59	Amended	V. 16, p. 270
28-29-83	Revoked	V. 15, p. 553				30-6-59w	Revoked	V. 16, p. 270
28-29-98	Amended	V. 15, p. 1804				30-6-60w	Revoked	V. 16, p. 270
28-29-100	Amended	V. 15, p. 1804				30-6-65	Amended	V. 16, p. 270
28-29-103	Amended	V. 15, p. 1804				30-6-65w	Revoked	V. 16, p. 271
28-31-4	Amended	V. 15, p. 297				30-6-70	Amended	V. 16, p. 271
28-31-10	Amended	V. 15, p. 301				30-6-70w	Revoked	V. 16, p. 271
28-31-10a	Amended	V. 16, p. 1048				30-6-72	Revoked	V. 16, p. 271
28-33-1	Revoked	V. 15, p. 495				30-6-72w	Revoked	V. 16, p. 271
28-33-11	Revoked	V. 15, p. 495				30-6-73	Revoked	V. 16, p. 271
28-33-12	Amended	V. 15, p. 495				30-6-77w	Revoked	V. 16, p. 272
28-34-11	Amended	V. 15, p. 497				30-6-78w	Revoked	V. 16, p. 272

**AGENCY 30: SOCIAL AND
REHABILITATION SERVICES**

Reg. No.	Action	Register
30-4-34	Amended	V. 16, p. 251
30-4-35	Amended	V. 16, p. 1001
30-4-35w	Revoked	V. 16, p. 251
30-4-40	Amended	V. 16, p. 251
30-4-41	Amended	V. 16, p. 251
30-4-41w	Revoked	V. 16, p. 252
30-4-50	Amended	V. 16, p. 252
30-4-50w	Revoked	V. 16, p. 252
30-4-52	Amended	V. 16, p. 252
30-4-52w	Revoked	V. 16, p. 252
30-4-53	Revoked	V. 16, p. 252
30-4-53w	Revoked	V. 16, p. 252
30-4-54	Amended	V. 16, p. 688
30-4-54w	Revoked	V. 16, p. 252
30-4-55	Amended	V. 16, p. 252
30-4-55w	Revoked	V. 16, p. 253
30-4-58	Revoked	V. 16, p. 253
30-4-58w	Revoked	V. 16, p. 253
30-4-59	Amended	V. 16, p. 253
30-4-59w	Revoked	V. 16, p. 253
30-4-60w	Revoked	V. 16, p. 253
30-4-61	Amended	V. 16, p. 253
30-4-61w	Revoked	V. 16, p. 253
30-4-63	Revoked	V. 16, p. 253
30-4-63w	Revoked	V. 16, p. 254
30-4-64	Amended	V. 16, p. 254
30-4-64w	Revoked	V. 16, p. 255

30-6-79	Revoked	V. 16, p. 272
30-6-81w	Revoked	V. 16, p. 272
30-6-82w	Revoked	V. 16, p. 272
30-6-85w	Revoked	V. 16, p. 272
30-6-86w	Revoked	V. 16, p. 272
30-6-87w	Revoked	V. 16, p. 272
30-6-94w	Revoked	V. 16, p. 272
30-6-103	Amended	V. 15, p. 1882
30-6-103w	Revoked	V. 16, p. 272
30-6-105	Revoked	V. 16, p. 272
30-6-105w	Revoked	V. 16, p. 272
30-6-106	Amended	V. 16, p. 272
30-6-106w	Revoked	V. 16, p. 274
30-6-107w	Revoked	V. 16, p. 274
30-6-108	Amended	V. 16, p. 274
30-6-109	Amended	V. 16, p. 275
30-6-109w	Revoked	V. 16, p. 276
30-6-110	Amended	V. 16, p. 276
30-6-110w	Revoked	V. 16, p. 277
30-6-111	Amended	V. 16, p. 277
30-6-111w	Revoked	V. 16, p. 278
30-6-112w	Revoked	V. 16, p. 278
30-6-113	Amended	V. 16, p. 1017
30-6-113w	Revoked	V. 16, p. 279
30-6-140	Amended	V. 16, p. 279
30-6-150w	Revoked	V. 16, p. 280
30-7-65	Amended	V. 16, p. 280
30-7-100	Amended	V. 16, p. 280
30-7-102	Amended	V. 15, p. 927
30-7-103	Amended	V. 15, p. 929
30-7-104	Amended	V. 15, p. 929
30-10-1a	Amended	V. 15, p. 1887
30-10-2	Amended	V. 15, p. 1890
30-10-7	Amended	V. 15, p. 1890
30-10-15a	Amended	V. 15, p. 1891
30-10-17	Amended	V. 15, p. 1892
30-10-19	Amended	V. 15, p. 1894
30-10-21	Amended	V. 15, p. 929
30-10-25	Amended	V. 15, p. 1894
30-10-217	Amended	V. 15, p. 930
30-10-218	Amended	V. 15, p. 550
30-41-1	through	
30-41-5	Revoked	V. 15, p. 930
30-41-6a	Revoked	V. 15, p. 930
30-41-6b	Revoked	V. 15, p. 1895
30-41-6c	through	
30-41-6h	Revoked	V. 15, p. 930, 931
30-41-7a	through	
30-41-7i	Revoked	V. 15, p. 931
30-41-8	Revoked	V. 15, p. 931
30-41-10	through	
30-41-20	Revoked	V. 15, p. 931
30-46-10	Amended	V. 15, p. 1895
30-46-13	Amended	V. 15, p. 1896
30-46-15	Amended	V. 15, p. 1896
30-46-16	Amended	V. 15, p. 1896
30-46-17	Amended	V. 15, p. 1896
30-63-1	New	V. 15, p. 931
30-63-10	through	
30-63-14	New	V. 15, p. 931-933
30-63-20	New	V. 15, p. 933
30-63-21	New	V. 15, p. 933
30-63-22	New	V. 15, p. 934
30-63-23	New	V. 15, p. 1215
30-63-24	through	
30-63-31	New	V. 15, p. 934-937
30-64-1	New	V. 15, p. 937
30-64-10	through	
30-64-13	New	V. 15, p. 937
30-64-20	through	
30-64-34	New	V. 15, p. 938-942

AGENCY 36: DEPARTMENT OF TRANSPORTATION

Reg. No.	Action	Register
36-39-1	Amended	V. 16, p. 1078
36-39-2	Amended	V. 16, p. 1078

36-39-3	Amended	V. 16, p. 1078
36-39-6	Amended	V. 16, p. 1080

AGENCY 40: KANSAS INSURANCE DEPARTMENT

Reg. No.	Action	Register
40-1-19	Amended	V. 16, p. 685
40-1-42	New	V. 16, p. 41
40-1-43	New	V. 16, p. 41
40-1-44	New	V. 16, p. 41
40-2-21	Revoked	V. 16, p. 972
40-2-24	New	V. 16, p. 482
40-3-5	Amended	V. 16, p. 686
40-3-26	Amended	V. 16, p. 686
40-3-27	Amended	V. 16, p. 686
40-3-49	Amended	V. 16, p. 686
40-4-17	Amended	V. 15, p. 77
40-4-35	Amended	V. 15, p. 622
40-4-37	Amended	V. 15, p. 77
40-4-37d	Amended	V. 15, p. 78
40-4-41c	Amended	V. 16, p. 686
40-5-109	Amended	V. 15, p. 78
40-7-20a	Amended	V. 16, p. 483
40-7-21	Amended	V. 16, p. 484
40-8-7	Amended	V. 16, p. 687

AGENCY 47: DEPARTMENT OF HEALTH AND ENVIRONMENT (MINED-LAND CONSERVATION AND RECLAMATION)

Reg. No.	Action	Register
47-1-1	Revoked	V. 16, p. 585
47-1-3	Amended	V. 16, p. 585
47-1-4	Revoked	V. 16, p. 585
47-1-8	Amended	V. 16, p. 585
47-1-9	Amended	V. 16, p. 586
47-1-10	Revoked	V. 16, p. 586
47-1-11	Amended	V. 16, p. 586
47-2-14	Revoked	V. 16, p. 586
47-2-21	Amended	V. 16, p. 586
47-2-53	Amended	V. 16, p. 586
47-2-53a	Amended	V. 16, p. 586
47-2-58	Amended	V. 16, p. 586
47-2-64	Amended	V. 16, p. 586
47-2-67	Amended	V. 16, p. 587
47-2-74	Amended	V. 16, p. 587
47-2-75	Amended	V. 16, p. 587
47-3-1	Amended	V. 16, p. 587
47-3-2	Amended	V. 16, p. 588
47-3-3a	Amended	V. 16, p. 588
47-3-42	Amended	V. 16, p. 588
47-4-14a	Amended	V. 16, p. 590
47-4-15	Amended	V. 16, p. 595
47-4-16	Amended	V. 16, p. 598
47-4-17	Amended	V. 16, p. 598
47-5-5a	Amended	V. 16, p. 599
47-5-16	Amended	V. 16, p. 601
47-6-1	Amended	V. 16, p. 601
47-6-2	Amended	V. 16, p. 601
47-6-3	Amended	V. 16, p. 601
47-6-4	Amended	V. 16, p. 602
47-6-6	Amended	V. 16, p. 602
47-6-7	Amended	V. 16, p. 602
47-6-8	Amended	V. 16, p. 603
47-6-9	Amended	V. 16, p. 603
47-6-10	Amended	V. 16, p. 603
47-7-2	Amended	V. 16, p. 603
47-8-9	Amended	V. 16, p. 604
47-8-11	Amended	V. 16, p. 604
47-9-1	Amended	V. 16, p. 604
47-9-2	Amended	V. 16, p. 607
47-9-4	Amended	V. 16, p. 607
47-10-1	Amended	V. 16, p. 608
47-11-8	Amended	V. 16, p. 608
47-12-4	Amended	V. 16, p. 608
47-13-4	Amended	V. 16, p. 609
47-13-5	Amended	V. 16, p. 609
47-13-6	Amended	V. 16, p. 610
47-14-7	Amended	V. 16, p. 610
47-15-1a	Amended	V. 16, p. 610
47-15-3	Amended	V. 16, p. 611
47-15-4	Amended	V. 16, p. 611
47-15-7	Amended	V. 16, p. 611
47-15-8	Amended	V. 16, p. 611
47-15-15	Amended	V. 16, p. 612
47-15-17	Amended	V. 16, p. 612

47-16-1	through	
47-16-8	Amended	V. 16, p. 612-614
47-16-9	New	V. 16, p. 614
47-16-10	New	V. 16, p. 614
47-16-11	New	V. 16, p. 614

AGENCY 49: DEPARTMENT OF HUMAN RESOURCES

Reg. No.	Action	Register
49-45-10	through	
49-45-19	Revoked	V. 15, p. 1709
49-53-1	Revoked	V. 15, p. 1709
49-53-2	Revoked	V. 15, p. 1709

AGENCY 50: DEPARTMENT OF HUMAN RESOURCES—DIVISION OF EMPLOYMENT

Reg. No.	Action	Register
50-2-21	Amended	V. 15, p. 1707
50-2-25a	through	
50-2-25e	New	V. 16, p. 1047

AGENCY 51: DEPARTMENT OF HUMAN RESOURCES—DIVISION OF WORKERS COMPENSATION

Reg. No.	Action	Register
51-9-7	Amended	V. 15, p. 345

AGENCY 60: BOARD OF NURSING

Reg. No.	Action	Register
60-1-104	New	V. 16, p. 436
60-2-101	Amended	V. 16, p. 437
60-2-102	through	
60-2-108	New	V. 16, p. 437-440
60-3-106	Amended	V. 16, p. 440
60-9-109	Revoked	V. 15, p. 1807
60-11-103	Amended	V. 15, p. 1931
60-11-108	Amended	V. 15, p. 115
60-11-109	Revoked	V. 15, p. 115
60-11-112	Revoked	V. 15, p. 115
60-11-114	Revoked	V. 15, p. 115
60-11-117	Revoked	V. 15, p. 115
60-12-106	Amended	V. 15, p. 115
60-12-109	Revoked	V. 15, p. 116
60-13-112	Amended	V. 15, p. 116
60-13-115	Revoked	V. 15, p. 116
60-16-102	Amended	V. 15, p. 1807
60-16-104	Amended	V. 15, p. 1807

AGENCY 65: BOARD OF EXAMINERS IN OPTOMETRY

Reg. No.	Action	Register
65-5-6	Amended	V. 16, p. 300
65-5-9	New	V. 16, p. 249
65-5-10	New	V. 16, p. 250

AGENCY 66: BOARD OF TECHNICAL PROFESSIONS

Reg. No.	Action	Register
66-6-1	Amended	V. 15, p. 184
66-6-6	Amended	V. 15, p. 185
66-7-3	Amended	V. 15, p. 185
66-8-1	Amended	V. 15, p. 185
66-10-1	Amended	V. 15, p. 185
66-12-1	Amended	V. 15, p. 185
66-14-1	through	
66-14-12	New	V. 15, p. 186, 187

AGENCY 69: BOARD OF COSMETOLOGY

Reg. No.	Action	Register
69-1-1	Amended	V. 15, p. 292
69-1-2	Amended	V. 15, p. 292
69-1-3	Revoked	V. 15, p. 292
69-1-4	Amended	V. 15, p. 292
69-1-7	Revoked	V. 15, p. 293
69-1-8	Amended	V. 15, p. 293
69-2-1	Revoked	V. 15, p. 293
69-3-1	Amended	V. 15, p. 293

(continued)

69-3-2	Revoked	V. 15, p. 293
69-3-3	Amended	V. 15, p. 293
69-3-4	Amended	V. 15, p. 294
69-3-5	Revoked	V. 15, p. 294
69-3-6	Amended	V. 15, p. 294
69-3-7	Amended	V. 15, p. 294
69-3-8	Amended	V. 15, p. 742
69-3-9	Amended	V. 15, p. 294
69-3-10	Revoked	V. 15, p. 294
69-3-11	Revoked	V. 15, p. 294
69-3-17	Revoked	V. 15, p. 294
69-3-19	Revoked	V. 15, p. 294
69-3-22		
through		
69-3-25	Revoked	V. 15, p. 294
69-3-26	New	V. 15, p. 294
69-3-27	New	V. 15, p. 294
69-3-28	New	V. 15, p. 294
69-4-2	Amended	V. 15, p. 294
69-4-6	Revoked	V. 15, p. 295
69-4-9	Amended	V. 15, p. 295
69-4-11	Revoked	V. 15, p. 295
69-4-12	Amended	V. 15, p. 295
69-5-2	Revoked	V. 15, p. 295
69-5-6	Amended	V. 15, p. 295
69-5-10	Revoked	V. 15, p. 295
69-5-13	Revoked	V. 15, p. 295
69-5-14	New	V. 15, p. 295
69-5-15	New	V. 15, p. 295
69-5-16	New	V. 15, p. 295
69-6-1	Revoked	V. 15, p. 295
69-6-2	Amended	V. 15, p. 295
69-6-5	Amended	V. 15, p. 295
69-6-6	Revoked	V. 15, p. 296
69-6-7	Amended	V. 15, p. 296
69-8-2	Revoked	V. 15, p. 296
69-8-3	Revoked	V. 15, p. 296
69-8-4	Revoked	V. 15, p. 296
69-8-6	Revoked	V. 15, p. 296
69-11-1	Amended	V. 15, p. 296
69-11-2	Amended	V. 15, p. 296
69-13-1	Amended	V. 15, p. 296
69-13-2	Amended	V. 15, p. 296
69-14-1		
through		
69-14-5	New	V. 15, p. 971, 972

AGENCY 70: BOARD OF VETERINARY MEDICAL EXAMINERS

Reg. No.	Action	Register
70-1-1	Amended	V. 16, p. 173
70-1-6	New	V. 16, p. 441
70-2-1	Revoked	V. 16, p. 173
70-2-2	Revoked	V. 16, p. 173
70-2-3	Revoked	V. 16, p. 173
70-4-1		
through		
70-4-7	Revoked	V. 16, p. 173
70-4-8	New	V. 16, p. 441
70-4-9	New	V. 16, p. 443
70-4-10	New	V. 16, p. 443
70-5-1	Amended	V. 16, p. 173
70-7-1	New	V. 16, p. 173
70-8-1	New	V. 16, p. 174
70-10-1	New	V. 16, p. 175

AGENCY 71: KANSAS DENTAL BOARD

Reg. No.	Action	Register
71-4-1	Amended	V. 15, p. 1860
71-4-3	Amended	V. 15, p. 1860

AGENCY 74: BOARD OF ACCOUNTANCY

Reg. No.	Action	Register
74-12-1	Amended	V. 15, p. 1215

AGENCY 75: CONSUMER CREDIT COMMISSIONER

Reg. No.	Action	Register
75-6-3	Revoked	V. 15, p. 1129
75-6-4	Revoked	V. 15, p. 1129
75-6-7	Revoked	V. 15, p. 1129
75-6-8	Revoked	V. 15, p. 1129
75-6-9	Amended	V. 15, p. 1379
75-6-10	Revoked	V. 15, p. 1129
75-6-11	Revoked	V. 15, p. 1129

75-6-16	Revoked	V. 15, p. 1129
75-6-17	Revoked	V. 15, p. 1129
75-6-18	Revoked	V. 15, p. 1129
75-6-25	Revoked	V. 15, p. 1129
75-6-26	Amended	V. 16, p. 301
75-6-29	Revoked	V. 15, p. 1129
75-8-1		
through		
75-8-11	Revoked	V. 15, p. 1129

AGENCY 80: KANSAS PUBLIC EMPLOYEES RETIREMENT SYSTEM

Reg. No.	Action	Register
80-8-2	Amended	V. 15, p. 1832
80-8-3	Amended	V. 15, p. 1832
80-8-4	Amended	V. 15, p. 1833
80-8-7	Amended	V. 15, p. 1833

AGENCY 81: OFFICE OF THE SECURITIES COMMISSIONER

Reg. No.	Action	Register
81-1-1	Amended	V. 15, p. 697
81-2-1	Amended	V. 15, p. 698
81-3-1	Amended	V. 15, p. 698
81-3-4	Revoked	V. 15, p. 700
81-4-1	Amended	V. 15, p. 700
81-5-1	Revoked	V. 15, p. 701
81-5-2	Revoked	V. 15, p. 701
81-5-3	Amended	V. 15, p. 701
81-5-4	Amended	V. 15, p. 701
81-5-7	Amended	V. 15, p. 701
81-5-9	Amended	V. 15, p. 702
81-6-1	Amended	V. 15, p. 702
81-7-2	Amended	V. 15, p. 703
81-8-1	Revoked	V. 15, p. 703
81-9-1	Revoked	V. 15, p. 703
81-13-1	Revoked	V. 15, p. 703

AGENCY 82: STATE CORPORATION COMMISSION

Reg. No.	Action	Register
82-3-101	Amended	V. 15, p. 1538
82-3-103	Amended	V. 15, p. 1541
82-3-206	Amended	V. 15, p. 1670
82-3-307	Amended	V. 15, p. 1670
82-3-700		
through		
82-3-704	New	V. 15, p. 1542-1544

AGENCY 86: REAL ESTATE COMMISSION

Reg. No.	Action	Register
86-1-5	Amended	V. 15, p. 598
86-1-11	Amended	V. 15, p. 1831
86-3-25	Amended	V. 15, p. 1331

AGENCY 91: DEPARTMENT OF EDUCATION

Reg. No.	Action	Register
91-1-68c	Amended	V. 15, p. 1863
91-5-3	Amended	V. 15, p. 1864
91-10-2	Amended	V. 16, p. 409
91-12-22	Amended	V. 15, p. 226
91-12-61	Amended	V. 15, p. 230
91-31-1	Revoked	V. 15, p. 1864
91-31-2	Revoked	V. 15, p. 1864
91-31-3	Revoked	V. 15, p. 1864
91-31-4	Revoked	V. 15, p. 1864
91-31-4a	Revoked	V. 15, p. 1864
91-31-5	Revoked	V. 15, p. 1864
91-31-6	Revoked	V. 15, p. 1864
91-31-7	Revoked	V. 15, p. 1864
91-31-8	Revoked	V. 15, p. 1864
91-31-9	Revoked	V. 15, p. 1864
91-31-10	Revoked	V. 15, p. 1865
91-31-12a		
through		
91-31-12h	Revoked	V. 15, p. 1865
91-31-13	Revoked	V. 15, p. 1865
91-31-14	Revoked	V. 15, p. 1865
91-31-14a	Revoked	V. 15, p. 1865
91-31-14b	Revoked	V. 15, p. 1865
91-31-14c	Revoked	V. 15, p. 1865
91-31-15	Revoked	V. 15, p. 1865
91-31-16		
through		
91-31-30	New	V. 15, p. 1865-1869

91-33-1		
through		
91-33-8	Revoked	V. 15, p. 1869
91-34-1		
through		
91-34-5	Revoked	V. 15, p. 1870
91-34-7		
through		
91-34-14	Revoked	V. 15, p. 1870

AGENCY 98: KANSAS WATER OFFICE

Reg. No.	Action	Register
98-5-1	Amended	V. 15, p. 1708
98-5-8	New	V. 15, p. 1709

AGENCY 100: BOARD OF HEALING ARTS

Reg. No.	Action	Register
100-6-2	Amended	V. 16, p. 737
100-23-1	Amended	V. 16, p. 652
100-29-1		
through		
100-29-14	New	V. 16, p. 380-384
100-34-3	Revoked	V. 16, p. 384
100-34-4	Revoked	V. 16, p. 384
100-35-1	Revoked	V. 16, p. 384
100-35-3	Revoked	V. 16, p. 384
100-35-6	Revoked	V. 16, p. 384
100-35-7	Revoked	V. 16, p. 384
100-36-1	Revoked	V. 16, p. 384
100-37-1	Revoked	V. 16, p. 384
100-37-2	Revoked	V. 16, p. 384
100-38-1	Revoked	V. 16, p. 385
100-39-1	Revoked	V. 16, p. 385
100-40-2	Revoked	V. 16, p. 385
100-42-2	Revoked	V. 16, p. 385
100-46-1	Revoked	V. 16, p. 385
100-46-2	Revoked	V. 16, p. 385
100-46-3	Revoked	V. 16, p. 385
100-46-5	Revoked	V. 16, p. 385
100-46-6	Revoked	V. 16, p. 385
100-47-1	Revoked	V. 16, p. 385
100-54-7	Amended	V. 16, p. 142
100-55-1		
through		
100-55-8	Amended	V. 15, p. 1928-1930
100-55-9	New	V. 15, p. 1930
100-55-10	New	V. 15, p. 1930
100-69-1		
through		
100-69-9	New	V. 15, p. 1021, 1022

AGENCY 104: STATE BANKING DEPARTMENT, CONSUMER CREDIT COMMISSIONER AND DEPARTMENT OF CREDIT UNIONS

Reg. No.	Action	Register
104-1-2	Amended	V. 15, p. 1129

AGENCY 105: BOARD OF INDIGENTS' DEFENSE SERVICES

Reg. No.	Action	Register
105-3-2	Amended	V. 15, p. 1583
105-3-12	New	V. 15, p. 1584
105-4-2	Amended	V. 15, p. 1584
105-5-4	Amended	V. 15, p. 1584

AGENCY 108: STATE EMPLOYEES HEALTH CARE COMMISSION

Reg. No.	Action	Register
108-1-1	Amended	V. 16, p. 651

AGENCY 109: BOARD OF EMERGENCY MEDICAL SERVICES

Reg. No.	Action	Register
109-1-1	Amended	V. 16, p. 77
109-1-2	New	V. 16, p. 79
109-2-1	Amended	V. 16, p. 79
109-2-2	Amended	V. 16, p. 79
109-2-3	Revoked	V. 16, p. 79
109-2-4		
through		
109-2-9	Amended	V. 16, p. 79-84
109-2-11	Amended	V. 16, p. 85
109-2-12	Amended	V. 16, p. 86
109-2-13	New	V. 16, p. 87

109-2-14	New	V. 16, p. 89	111-3-33	New	V. 7, p. 1434	111-4-341b	Revoked	V. 16, p. 451
109-3-1	Amended	V. 16, p. 89	111-3-34	New	V. 13, p. 149	111-4-341c	Revoked	V. 16, p. 451
109-4-1	Revoked	V. 16, p. 89	111-3-35	Amended	V. 14, p. 909	111-4-342	through	
109-4-2	Revoked	V. 16, p. 89	111-3-36	New	V. 13, p. 877	111-4-345	Revoked	V. 16, p. 451
109-4-3	Revoked	V. 16, p. 89	111-3-37	New	V. 13, p. 877	111-4-346	through	
109-5-1	Amended	V. 15, p. 1585	111-4-1	through		111-4-349	Revoked	V. 12, p. 114
109-6-1	Amended	V. 15, p. 1586	111-4-5	Revoked	V. 12, p. 113	111-4-350	through	
109-6-2	New	V. 15, p. 1586	111-4-5a	Revoked	V. 12, p. 113	111-4-355	Revoked	V. 16, p. 452
109-7-1	Amended	V. 15, p. 1586	111-4-6	through		111-4-356	through	
109-8-1	Amended	V. 16, p. 685	111-4-15	Revoked	V. 12, p. 113	111-4-361	Revoked	V. 14, p. 7
109-10-1	Amended	V. 15, p. 1587	111-4-66	through		111-4-362	through	
109-14-1	New	V. 16, p. 89	111-4-77	New	V. 7, p. 207-209	111-4-365	Revoked	V. 12, p. 114, 115
AGENCY 111: KANSAS LOTTERY								
Reg. No.	Action	Register	Reg. No.	Action	Register	Reg. No.	Action	Register
111-1-2	Amended	V. 7, p. 1190	111-4-96	through		111-4-366	through	
111-1-5	Amended	V. 15, p. 1304	111-4-114	New	V. 7, p. 1606-1610	111-4-369	Revoked	V. 12, p. 1373
111-2-1	Amended	V. 16, p. 1043	111-4-100	Amended	V. 14, p. 972	111-4-370	through	
111-2-2	Amended	V. 12, p. 1261	111-4-101	through		111-4-379	Revoked	V. 14, p. 7, 8
111-2-2a	through		111-4-106	Revoked	V. 16, p. 450	111-4-380	through	
111-2-2e	New	V. 14, p. 1633, 1634	111-4-106a	Revoked	V. 16, p. 450	111-4-383	Revoked	V. 12, p. 1664
111-2-4	Amended	V. 15, p. 1953	111-4-107	through		111-4-384	through	
111-2-6	Revoked	V. 13, p. 149	111-4-114	Revoked	V. 16, p. 450, 451	111-4-387	Revoked	V. 12, p. 1373
111-2-7	Revoked	V. 10, p. 1210	111-4-153	through		111-4-388	through	
111-2-13	Revoked	V. 10, p. 881	111-4-160	Revoked	V. 9, p. 1676, 1677	111-4-391	Revoked	V. 12, p. 1373
111-2-14	Amended	V. 14, p. 1634	111-4-177	through		111-4-392	through	
111-2-15	Revoked	V. 10, p. 881	111-4-212	Revoked	V. 9, p. 1677, 1678	111-4-400	Revoked	V. 16, p. 252
111-2-16	Revoked	V. 10, p. 1210	111-4-213	through		111-4-401	through	
111-2-17	Revoked	V. 10, p. 1210	111-4-220	Revoked	V. 10, p. 1213	111-4-404	Revoked	V. 12, p. 1373
111-2-18	Revoked	V. 11, p. 413	111-4-221	through		111-4-405	through	
111-2-19	Revoked	V. 11, p. 413	111-4-224	Revoked	V. 10, p. 1585	111-4-413	Revoked	V. 16, p. 452
111-2-20	through		111-4-225	through		111-4-414	through	
111-2-26	Revoked	V. 13, p. 1401	111-4-228	Revoked	V. 10, p. 1585	111-4-414	through	
111-2-27	Revoked	V. 14, p. 972	111-4-229	through		111-4-428	Revoked	V. 14, p. 8
111-2-28	New	V. 12, p. 1844	111-4-236	Revoked	V. 10, p. 1585, 1586	111-4-429	through	
111-2-29	Revoked	V. 14, p. 972	111-4-237	through		111-4-432	Revoked	V. 12, p. 1373
111-2-30	Amended	V. 15, p. 1180	111-4-240	Revoked	V. 11, p. 413	111-4-433	through	
111-2-31	New	V. 14, p. 170	111-4-241	through		111-4-436	Revoked	V. 12, p. 1374
111-2-32	through		111-4-244	Revoked	V. 12, p. 1371	111-4-437	through	
111-2-42	Revoked	V. 16, p. 448, 449	111-4-245	through		111-4-440	Revoked	V. 12, p. 1374
111-2-43	New	V. 15, p. 287	111-4-248	Revoked	V. 12, p. 1371	111-4-441	through	
111-2-44	New	V. 15, p. 288	111-4-249	through		111-4-444	Revoked	V. 14, p. 8
111-2-45	New	V. 15, p. 288	111-4-256	Revoked	V. 12, p. 113, 114	111-4-445	through	
111-2-46	New	V. 15, p. 624	111-4-257	through		111-4-448	Revoked	V. 12, p. 1374
111-2-47	Amended	V. 16, p. 449	111-4-286	Revoked	V. 11, p. 413, 414	111-4-449	through	
111-2-48	New	V. 15, p. 1055	111-4-287	through		111-4-453	Revoked	V. 14, p. 8
111-2-49	New	V. 15, p. 1055	111-4-290	Revoked	V. 12, p. 1371	111-4-454	through	
111-2-50	New	V. 15, p. 1056	111-4-291	through		111-4-465	Revoked	V. 12, p. 1664, 1665
111-2-51	New	V. 15, p. 1440	111-4-300	Revoked	V. 12, p. 114	111-4-466	through	
111-2-52	New	V. 15, p. 1441	111-4-301	through		111-4-469	Revoked	V. 12, p. 1665
111-2-53	New	V. 15, p. 1710	111-4-307	Revoked	V. 13, p. 1402	111-4-470	through	
111-2-54	New	V. 15, p. 1920	111-4-308	through		111-4-477	Revoked	V. 16, p. 452, 453
111-2-55	New	V. 15, p. 1953	111-4-317	Revoked	V. 16, p. 451	111-4-478	through	
111-2-56	New	V. 16, p. 449	111-4-318	through		111-4-492	Revoked	V. 14, p. 974, 975
111-2-57	New	V. 16, p. 449	111-4-321	Revoked	V. 12, p. 114	111-4-493	through	
111-2-58	New	V. 16, p. 689	111-4-322	through		111-4-496	Revoked	V. 16, p. 453
111-2-59	New	V. 16, p. 1043	111-4-327	Revoked	V. 12, p. 1371	111-4-497	through	
111-3-1	Amended	V. 14, p. 908	111-4-328	through		111-4-512	Revoked	V. 14, p. 975
111-3-6	Amended	V. 12, p. 677	111-4-335	Revoked	V. 12, p. 114	111-4-513	through	
111-3-9	Revoked	V. 11, p. 1793	111-4-336	through		111-4-519	Revoked	V. 16, p. 453
111-3-10	through		111-4-340	Revoked	V. 16, p. 451	111-4-521	Revoked	V. 16, p. 453
111-3-31	New	V. 7, p. 201-206	111-4-341	Revoked	V. 11, p. 1473			
111-3-11	Amended	V. 13, p. 35	111-4-341a	Revoked	V. 12, p. 1372			
111-3-12	Amended	V. 13, p. 1826						
111-3-13	Amended	V. 11, p. 1148						
111-3-14	Amended	V. 13, p. 1826						
111-3-16	Amended	V. 9, p. 1566						
111-3-19	through							
111-3-22	Amended	V. 9, p. 30						
111-3-19	Revoked	V. 13, p. 1827						
111-3-20	Amended	V. 11, p. 1148						
111-3-21	Amended	V. 11, p. 1148						
111-3-22	Amended	V. 11, p. 1148						
111-3-23	Revoked	V. 10, p. 883						
111-3-25	Amended	V. 13, p. 1827						
111-3-26	Amended	V. 11, p. 1149						
111-3-27	Amended	V. 11, p. 1149						
111-3-29	Revoked	V. 11, p. 1149						
111-3-31	Amended	V. 8, p. 209						
111-3-32	Amended	V. 10, p. 883						

111-4-522 through			111-4-911 through			111-6-17	Revoked	V. 10, p. 1475
111-4-571	Revoked	V. 14, p. 975-977	111-4-918	New	V. 15, p. 1475, 1476	111-6-18	New	V. 13, p. 150
111-4-572 through			111-4-915	Amended	V. 15, p. 1954	111-6-19	New	V. 13, p. 340
111-4-585	New	V. 13, p. 878-880	111-4-918	Amended	V. 15, p. 1954	111-6-20	Amended	V. 15, p. 1716
111-4-572	Amended	V. 16, p. 1044	111-4-919 through			111-6-21	New	V. 13, p. 881
111-4-574	Amended	V. 16, p. 1044	111-4-941	New	V. 15, p. 1710-1716	111-6-22	New	V. 13, p. 881
111-4-575	Amended	V. 16, p. 1044	111-4-942 through			111-6-23	New	V. 13, p. 881
111-4-576	Amended	V. 16, p. 1044	111-4-965	New	V. 15, p. 1921-1926	111-7-10	New	V. 7, p. 1192, 1193
111-4-577	Amended	V. 16, p. 1044	111-4-946	Amended	V. 15, p. 1954	111-7-1	Amended	V. 8, p. 212
111-4-579	Amended	V. 16, p. 1045	111-4-962	Amended	V. 16, p. 341	111-7-3	Amended	V. 11, p. 1796
111-4-581	Amended	V. 16, p. 1045	111-4-963	Amended	V. 16, p. 341	111-7-3a	Revoked	V. 13, p. 340
111-4-582	Amended	V. 16, p. 1045	111-4-966 through			111-7-4	Amended	V. 9, p. 1367
111-4-583	Amended	V. 15, p. 883	111-4-970	New	V. 15, p. 1954, 1955	111-7-5	Amended	V. 9, p. 986
111-4-584	Amended	V. 16, p. 1045	111-4-971 through			111-7-6	Amended	V. 9, p. 987
111-4-586 through*			111-4-982	New	V. 16, p. 341-344	111-7-9	Amended	V. 12, p. 1263
111-4-606	Revoked	V. 14, p. 977, 978	111-4-983 through			111-7-11	Amended	V. 15, p. 1188
111-4-607 through			111-4-991	New	V. 16, p. 456, 457	111-7-12		
111-4-619	New	V. 13, p. 1436-1438	111-4-992	New	V. 16, p. 456, 457	111-7-32	New	V. 7, p. 1194-1196
111-4-607	Amended	V. 14, p. 1407	111-4-992 through			111-7-33		
111-4-609	Amended	V. 14, p. 1407	111-4-1012	New	V. 16, p. 689-694	111-7-43	New	V. 7, p. 1197, 1198
111-4-610	Amended	V. 14, p. 1407	111-4-996a	New	V. 16, p. 1080	111-7-33a	New	V. 8, p. 300
111-4-611	Amended	V. 14, p. 1407	111-4-1013 through			111-7-44		
111-4-613	Amended	V. 14, p. 1408	111-4-1016	New	V. 16, p. 1045, 1046	111-7-54	Revoked	V. 13, p. 340
111-4-616 through			111-4-1017 through			111-7-46	Amended	V. 11, p. 1152
111-4-623	Revoked	V. 14, p. 978	111-4-1037	New	V. 16, p. 1081-1085	111-7-54	Amended	V. 11, p. 1511
111-4-624 through			111-5-1			111-7-55		
111-4-702	Revoked	V. 16, p. 453-455	111-5-23	New	V. 7, p. 209-213	111-7-63	Revoked	V. 10, p. 1217
111-4-703 through			111-5-9			111-7-60	Amended	V. 10, p. 262
111-4-723	New	V. 14, p. 909-914	111-5-19	Revoked	V. 15, p. 291	111-7-64		
111-4-724 through			111-5-21			111-7-66	New	V. 11, p. 13, 14
111-4-736	New	V. 14, p. 978-981	111-5-33	New	V. 11, p. 415-418	111-7-66	Amended	V. 15, p. 1304
111-4-737 through			111-5-21	Revoked	V. 15, p. 291	111-7-66a	Revoked	V. 13, p. 340
111-4-749	New	V. 14, p. 1095-1098	111-5-22	Amended	V. 13, p. 1438	111-7-75		
111-4-750 through			111-5-23	Amended	V. 15, p. 1059	111-7-78	New	V. 11, p. 1478-1480
111-4-757	New	V. 14, p. 1408, 1409	111-5-24	Amended	V. 11, p. 983	111-7-79	Revoked	V. 13, p. 340
111-4-758 through			111-5-25	Amended	V. 15, p. 1059	111-7-80		
111-4-761	New	V. 14, p. 1502, 1503	111-5-27	Amended	V. 11, p. 482	111-7-83		
111-4-762 through			111-5-28	Amended	V. 15, p. 1060	111-7-81	New	V. 11, p. 1478-1480
111-4-778	New	V. 14, p. 1410-1414	111-5-29	Amended	V. 15, p. 1060	111-7-83	Amended	V. 15, p. 1189
111-4-769	Amended	V. 14, p. 1503	111-5-34	New	V. 12, p. 318	111-7-83	Amended	V. 15, p. 1189
111-4-779 through			111-5-34a	Amended	V. 14, p. 1098	111-7-84		
111-4-791	New	V. 14, p. 1504-1507	111-5-35 through			111-7-93	Revoked	V. 15, p. 291
111-4-792			111-5-38	Revoked	V. 13, p. 1439	111-7-94	Revoked	V. 13, p. 340
111-4-803	New	V. 14, p. 1635-1638	111-5-39 through			111-7-95		
111-4-804 through			111-5-44	New	V. 15, p. 1022, 1023	111-7-118	Revoked	V. 15, p. 291, 292
111-4-816	New	V. 15, p. 116-119	111-5-45			111-7-119		
111-4-817 through			111-5-50	New	V. 15, p. 1060-1062	111-7-127	New	V. 15, p. 1189-1191
111-4-824	New	V. 15, p. 289, 290	111-5-52			111-7-122	Amended	V. 15, p. 1477
111-4-825 through			111-5-57	New	V. 16, p. 458, 459	111-7-123	Amended	V. 15, p. 1477
111-4-838	New	V. 15, p. 449-452	111-5-58			111-7-124	Amended	V. 15, p. 1477
111-4-839 through			111-5-63	New	V. 16, p. 1085-1087	111-7-126	Amended	V. 15, p. 1304
111-4-854	New	V. 15, p. 624-627	111-5-46	Amended	V. 15, p. 1186	111-7-128	New	V. 15, p. 1446
111-4-855 through			111-5-51	New	V. 15, p. 1477	111-8-1	New	V. 7, p. 1633
111-4-859	New	V. 15, p. 884, 885	111-6-1			111-8-2	New	V. 7, p. 1633
111-4-855	Amended	V. 15, p. 1181	111-6-15	New	V. 7, p. 213-217	111-8-3	Amended	V. 10, p. 886
111-4-860 through			111-6-1	Amended	V. 15, p. 1445	111-8-4	New	V. 7, p. 1714
111-4-860			111-6-3	Amended	V. 14, p. 313	111-8-4a	Revoked	V. 13, p. 1406
111-4-872	New	V. 15, p. 1056-1059	111-6-4	Amended	V. 10, p. 1413	111-8-5		
111-4-871	Amended	V. 15, p. 1181	111-6-5	Amended	V. 15, p. 1187	111-8-13	New	V. 7, p. 1634
111-4-873 through			111-6-6	Amended	V. 11, p. 1973	111-8-14	New	V. 13, p. 881
111-4-892	New	V. 15, p. 1181-1186	111-6-7	Amended	V. 11, p. 1477	111-8-15	New	V. 13, p. 881
111-4-893 through			111-6-7a	Amended	V. 15, p. 1188	111-9-1		
111-4-910	New	V. 15, p. 1441-1445	111-6-8	Revoked	V. 12, p. 1263	111-9-12	New	V. 7, p. 1714-1716
			111-6-9	Revoked	V. 14, p. 313	111-9-1		
			111-6-11	Revoked	V. 12, p. 1376	111-9-6	Revoked	V. 9, p. 1680
			111-6-12	Amended	V. 8, p. 212	111-9-13		
			111-6-13	Amended	V. 8, p. 299	111-9-18	Revoked	V. 9, p. 1680
			111-6-15	Amended	V. 12, p. 677			

111-9-25		
through		
111-9-30	New	V. 9, p. 699, 700
111-9-31		
through		
111-9-36	New	V. 10, p. 262
111-9-37		
through		
111-9-48	New	V. 10, p. 1439, 1440
111-9-49		
through		
111-9-54	New	V. 12, p. 318, 319
111-9-55		
through		
111-9-60	New	V. 12, p. 1263, 1264
111-9-61		
through		
111-9-78	New	V. 16, p. 1087-1089
111-10-1		
through		
111-10-9	New	V. 8, p. 136-138
111-10-7	Amended	V. 8, p. 301

AGENCY 112: KANSAS RACING AND GAMING COMMISSION

Reg. No.	Action	Register
112-3-17	Amended	V. 15, p. 182
112-3-19	Amended	V. 15, p. 222
112-4-1	Amended	V. 15, p. 223
112-4-4a	New	V. 15, p. 182
112-4-4b	New	V. 15, p. 1709
112-4-14b	Amended	V. 15, p. 1379
112-5-1	Amended	V. 15, p. 1125

112-5-2	Amended	V. 15, p. 224
112-6-1	Amended	V. 15, p. 1126
112-6-2	Amended	V. 15, p. 224
112-7-18	Amended	V. 15, p. 1801
112-10-6	Amended	V. 16, p. 379
112-10-35	Amended	V. 15, p. 1126
112-10-38	Amended	V. 15, p. 887
112-11-13a	Amended	V. 15, p. 1127
112-11-20	Amended	V. 15, p. 1127
112-16-14	Amended	V. 16, p. 380
112-17-15	Amended	V. 15, p. 888
112-18-21	New	V. 15, p. 1589
112-18-22	New	V. 15, p. 1590

AGENCY 115: DEPARTMENT OF WILDLIFE AND PARKS

Reg. No.	Action	Register
115-2-1	Amended	V. 16, p. 248
115-2-5	Amended	V. 15, p. 1093
115-4-1	Amended	V. 16, p. 823
115-4-3	Amended	V. 16, p. 824
115-4-5	Amended	V. 16, p. 825
115-4-6	Amended	V. 16, p. 826
115-4-7	Amended	V. 16, p. 828
115-4-13	Amended	V. 16, p. 829
115-30-3	Amended	V. 16, p. 249
115-30-6	Amended	V. 16, p. 249

AGENCY 117: REAL ESTATE APPRAISAL BOARD

Reg. No.	Action	Register
117-1-1	Amended	V. 15, p. 489
117-2-2	Amended	V. 16, p. 302

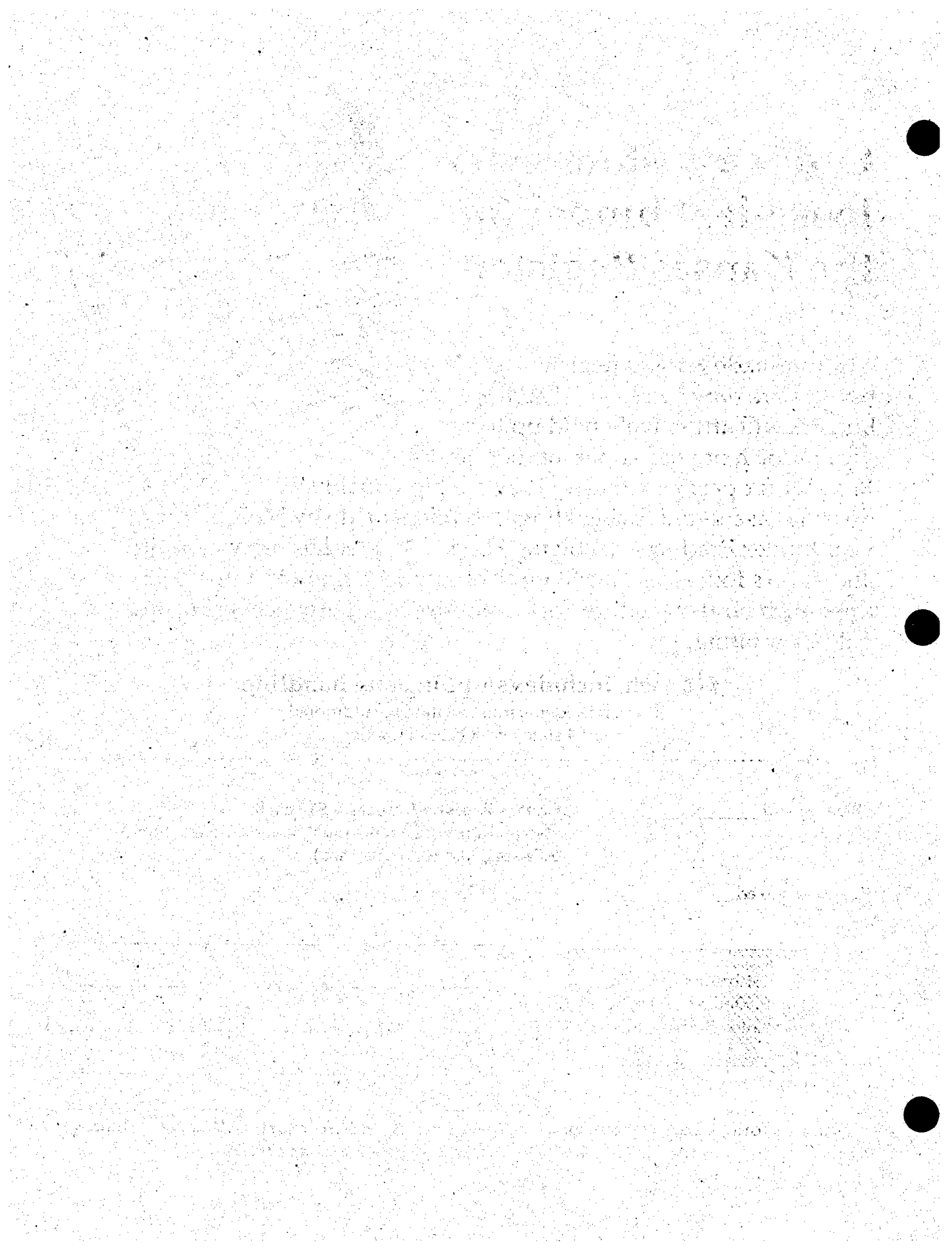
117-3-2	Amended	V. 16, p. 303
117-4-2	Amended	V. 16, p. 304
117-6-3	Amended	V. 15, p. 489
117-8-1	Amended	V. 15, p. 490

AGENCY 121: DEPARTMENT OF CREDIT UNIONS

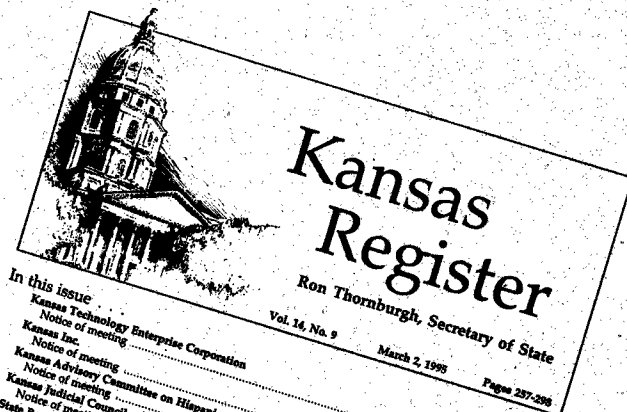
Reg. No.	Action	Register
121-2-1	New	V. 15, p. 887
121-3-1	New	V. 15, p. 1474
121-4-1		
through		
121-4-11	New	V. 16, p. 72-77
121-5-1	New	V. 16, p. 1048
121-5-2	New	V. 16, p. 1048

AGENCY 122: POOLED MONEY INVESTMENT BOARD

Reg. No.	Action	Register
122-2-2	Amended	V. 16, p. 42
122-3-1	Amended	V. 16, p. 42
122-3-2	Amended	V. 16, p. 43
122-3-3	Amended	V. 16, p. 43
122-3-4	Amended	V. 16, p. 43
122-3-5	Amended	V. 16, p. 43
122-3-7	Amended	V. 16, p. 43
122-3-9	Amended	V. 16, p. 44
122-3-10	Amended	V. 16, p. 44
122-3-11	Amended	V. 16, p. 44
122-4-1	Amended	V. 16, p. 44
122-5-1	Amended	V. 16, p. 44



Order a custom-made loose-leaf binder for the Kansas Register!



Custom-made Kansas Register binders are now available. These binders will attractively hold up to a year's worth of your copies of the Kansas Register for permanent use. They are high quality, durable casebound Swing Hinge® binders made by McBee Loose Leaf Binder Products. (A Swing Hinge® binder has more capacity and allows for easier interfiling than standard ring binders.) The three-inch binders feature dark blue supported vinyl covering and gold imprinting.

In this issue

Kansas Technology Enterprise Corporation	Page
Notice of meeting	259
Kansas Inc.	259
Notice of meeting	259
Kansas Advisory Committee on Hispanic Affairs	259
Notice of meeting	259
Kansas Judicial Council	259
Notice of meetings	259
State Board of Indigent Defense Services	260
Notice of meeting	260
Real Estate Appraisal Board	261
Notice of hearing on proposed administrative regulations	261
State Emergency Response Commission	261
Notice of meeting	261
Legislative bills introduced February 16-22	261
Kansas Law Enforcement Training Commission	261
Notice of meeting	261
Social and Rehabilitation Services	261
Notice of meeting	261
Request for proposals	261

\$12 each, includes shipping and handling.

(Kansas residents must include an additional \$0.74 state and local sales tax.)

Clip and mail

Please send _____

Kansas Register Binders @ \$12 each

(Note: Kansas residents must include an additional \$0.74 state and local sales tax.)

Total enclosed _____

Ship to:

Shipping is by
U.P.S. Delivery Service -
Street address is necessary.

Mail this form, with payment, to: Kansas Register, Kansas Secretary of State, 2nd Floor,
State Capitol, 300 S.W. 10th Ave., Topeka, KS 66612-1594

**Kansas Register
Secretary of State
2nd Floor, State Capitol
300 S.W. 10th Ave.
Topeka, KS 66612-1594**

Use this form or a copy of it to enter a subscription:

_____ **One-year subscriptions @ \$70 ea.**
(Kansas residents must include
\$4.31 state and local sales tax.)

Total Enclosed _____
(Make checks payable to the Kansas Register)

Send to:

(Please, no
more than
4 address
lines.)

Zip code must be included

This space for Register office use only.
Rec. No. _____
Exp. _____
Code _____

Use this form or a copy of it to enter a name or address change:

Remove your mailing label (above) and affix it here:

Indicate change of name or address
here:

**Mail either form to: Kansas Register, Secretary of State, 2nd Floor,
State Capitol, 300 S.W. 10th Ave., Topeka, KS 66612-1594**